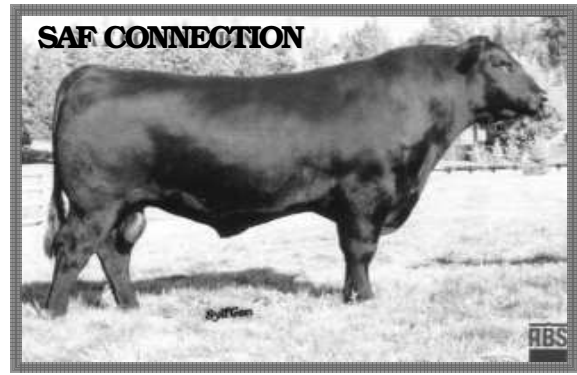


# HORSESHOE RANCH

## Lots 89-93

These 5 big thick strong calves belong to Horseshoe Ranch, Ben & Kellie Geddes, our grand kids. Ben takes care of our Angus cattle at our other ranch and they have some cows that they have got from us. We think this is a nice set of calves, with the right kind of pedigree.



**89 BK DANNY BOY 705**  
Calved 2-17-2007 Bull PENDING Tattoo 705

CONNEALY TIMELINE  
CONNEALY DANNY BOY  
13966936 ENERGY CONANGA 4851

ANKONIAN EXT 224  
DAVIS HOLLOW QUEEN T347  
12911072 DAVISQUEEN T29

CONNEALY DATELINE  
ENCHANTS FORTUNE  
HOFF HEARTLAND S C 456  
DIVIDENDS ENVY CONANGA  
N BAR EMULATION EXT  
ANKONY EMULOUS T3517  
COLOSSAL POWER066  
DAVIS QUEEN T234

Act BW	CED	BW	WW	YW	M	CEM	
<b>72</b>	<b>1.5</b>	<b>11.0</b>	<b>136</b>	<b>163</b>	<b>17</b>	<b>17</b>	
SEN	% IMF	RE	FAT	SW	SF	\$G	\$B
<b>120.73</b>	<b>1.15</b>	<b>1.42</b>	<b>1.004</b>	<b>121.22</b>	<b>19.24</b>	<b>120.27</b>	<b>124.14</b>

**90 BK DANNY BOY 706**  
Calved 2-21-2007 Bull PENDING Tattoo 706

CONNEALY TIMELINE  
CONNEALY DANNY BOY  
13966936 ENERGY CONANGA 4851

GDAR TRAVELER 71  
BB MS PAMELA 4079  
12146176 SCHULTZS PAMELA 3022

CONNEALY DATELINE  
ENCHANTS FORTUNE  
HOFF HEARTLAND SC 456  
DIVIDENDS ENVY CONANGA  
TRAVELER 1148 G DAR  
GDAR MISS BLACKCAP 567  
SCHULTZS POWER DRIVE 5  
PAMELA 302 OF S&S

Act BW	CED	BW	WW	YW	M	CEM	
<b>77</b>	<b>1.4</b>	<b>11.8</b>	<b>141</b>	<b>173</b>	<b>112</b>	<b>17</b>	
SEN	% IMF	RE	FAT	SW	SF	\$G	\$B
<b>114.15</b>	<b>10.02</b>	<b>10.25</b>	<b>1.002</b>	<b>122.63</b>	<b>116.52</b>	<b>112.35</b>	<b>125.48</b>

**91 BK DANNY BOY 707**  
Calved 2-25-2007 Bull PENDING Tattoo 707

CONNEALY TIMELINE  
CONNEALY DANNY BOY  
13966936 ENERGY CONANGA 4851

SILVER SHADOW PRECISION  
B&K LASSIE 307  
14495944 BB LASSIE 6031

CONNEALY DATELINE  
ENCHANTS FORTUNE  
HOFF HEARTLAND SC 456  
DIVIDENDS ENVY CONANGA  
TWIN VALLEY E161  
SILVER SHADOW LIBERTY 3  
ANKONIAN EQUINOX  
COX LASSIE 114-3087

Act BW	CED	BW	WW	YW	M	CEM	
<b>70</b>	<b>1.5</b>	<b>12.2</b>	<b>145</b>	<b>179</b>	<b>19</b>	<b>15</b>	
SEN	% IMF	RE	FAT	SW	SF	\$G	\$B
<b>114.60</b>	<b>1.0.01</b>	<b>10.42</b>	<b>10.000</b>	<b>122.59</b>	<b>120.48</b>	<b>111.56</b>	<b>129.46</b>

**92 BK CONNECTION 711**  
Calved 3-5-2007 Bull PENDING Tattoo 703

SVF GDAR 216 LTD  
S A F CONNECTION  
13544928 S A F ROYAL QUEEN 5084

ANKONIAN EQUINOX  
B B BEAUTY 6136  
12583500 DONAMER BEAUTY623

TRAVELER 124 GDAR  
GDAR FOREVER LADY 718  
BON VIEW BANDO 598  
SAF ROYAL QUEEN 9022  
RR TRAVELER 5204  
ANKONY EMULOUSA336  
JD 30K MARK B49  
GB L1 DOMINO 276

Act BW	CED	BW	WW	YW	M	CEM	
<b>71</b>	<b>1.6</b>	<b>11.4</b>	<b>134</b>	<b>160</b>	<b>119</b>	<b>17</b>	
SEN	% IMF	RE	FAT	SW	SF	\$G	\$B
<b>114.83</b>	<b>10.15</b>	<b>1.0.11</b>	<b>10.011</b>	<b>127.53</b>	<b>17.41</b>	<b>117.66</b>	<b>121.66</b>

**93 BK 427 NEW DESIGN 701**  
Calved 1-1-2007 Bull 15909373 Tattoo 701

BON VIEW NEW DESIGN 1407 B/R NEW DESIGN 036  
BK 1407 NEW DESIGN 427 BON VIEW PRIDE 664  
14876661 B B ERICA 6138 ANKONIAN EQUINOX  
SCHULZS ERICA H 310  
B/R FRONT RANGE 052 B/R NEW DESIGN 036  
BK SUSIE 509 WHITE FENCE PRIDE H1  
15068441 BB 902 LONE OAK 4091 LONE OAK WIX PLUS 902  
BB LADY 1432

Act BW	CED	BW	WW	YW	M	CEM	
<b>58</b>	<b>7</b>	<b>0.7</b>	<b>37</b>	<b>71</b>	<b>21</b>	<b>6</b>	
SEN	% IMF	RE	FAT	SW	SF	\$G	\$B
<b>6.15</b>	<b>NA</b>	<b>NA</b>	<b>NA</b>	<b>25.46</b>	<b>15.96</b>	<b>NA</b>	<b>NA</b>

## PAUL'S LIVESTOCK

### Lots 94-118

These 25 bull calves are from Mike & Kerrie Paul of Paul's Livestock. Our calves were too young and weren't ready to sell so we asked Mike to put these bull calves in our sale. There is no place in the U.S. that you can find cattle bred for marbling and ribeye like these. Mike and Karrie have bought the best bloodlines money can buy and they use semen from the most proven sires that are available. There are several ET calves in this bunch. Mike and Karrie's bulls a year ago had the best ultra sound data that we have ever seen. Better than the best herds in America. He had over 5 bulls with over a 9 marbling score and didn't have any under a 4 out of 75 bulls, the best carcass data I have ever seen. These bulls should be just as good or better. Be sure to come look at this thick meaty out-standing set of calves. There are some herd bull prospects among them.

**94 PL E161 T816**  
Calved 3-19-2007 Bull PENDING Tattoo T816

GAR PRECISION 1680  
TWIN VALLEY PRECISION E161  
12346200 WCC BLACKCAP C9

QAS TRAVELER 23-4  
GT FAME 110  
11461972 GT EVERGREEN 312

TEHAMA BANDO 155  
9J9 GAR 856  
SS TRAVELER 6T6  
PREMIER BLACKCAP 6276A  
BAND 234 OF IDEAL 3163  
QAS BLACKBIRD EVE 601 1  
JAUER BAND 105 561 77  
GT EVERGREEN 115

Act BW	CED	BW	WW	YW	M	CEM	
<b>NA</b>	<b>1.5</b>	<b>11.4</b>	<b>134</b>	<b>176</b>	<b>117</b>	<b>14</b>	
SEN	% IMF	RE	FAT	SW	SF	\$G	\$B
<b>16.75</b>	<b>1.32</b>	<b>1.52</b>	<b>1.008</b>	<b>117.53</b>	<b>122.29</b>	<b>125.53</b>	<b>142.41</b>

**95 PL 5175 T875**  
Calved 3-20-2007 Bull PENDING Tattoo T875

BON VIEW BANDO 598  
SAF 598 BANDO 5175  
12350821 SAF ROYAL LASS 1002

QAS TRAVELER 23-4  
GT FAME 110  
11461972 GT EVERGREEN 312

TEHAMA BANDO 155  
BON VIEW DORA 56  
VDAR NEW TREND 315  
SAF ROYAL LASS 6089  
BAND 234 OF IDEAL 3163  
QAS BLACKBIRD EVE 601 1  
JAUER BAND 105 561 77  
GT EVERGREEN 115

Act BW	CED	BW	WW	YW	M	CEM	
<b>NA</b>	<b>1.3</b>	<b>12.4</b>	<b>144</b>	<b>187</b>	<b>123</b>	<b>13</b>	
SEN	% IMF	RE	FAT	SW	SF	\$G	\$B
<b>13.23</b>	<b>1.24</b>	<b>1.30</b>	<b>1.002</b>	<b>125.45</b>	<b>129.88</b>	<b>120.15</b>	<b>139.93</b>