

# BUILT TO WORK FOR REAL CATTLEMEN

## ANNUAL BULL SALE



**BB EXCLUSIVE 3179**

**FEB. 9,  
2015**

**12:30 PM  
AT THE  
RANCH**

**LUNCH AVAILABLE**



**BB MARK CLASSIC 3171**



**BB 994 DOMINO 4030**

### OFFERING:

#### HEREFORD BULLS

**80 SPRING AND  
WINTER CALVES**

**60 COMING  
2-YEAR OLDS**

#### ANGUS BULLS

**15 SPRING AND  
WINTER CALVES**

**10 COMING  
2-YEAR OLDS**



**BB ADVANTAGE 4010**



**BB 994 DOMINO 4050**



**BB 1050 ADVANCE 4021**



**BB TEN X 4010**

nfac



Bill Bennett & Family  
PO Box 36, Connell, WA 99326

Bill Cell 509-551-6102

Joe Cell 509-551-6104

Leslie Cell 509-551-6622

Jay Cell 509-551-6101

509-234-4361 • Fax 509-234-1001

bbcattle@bossig.com

[WWW.BBCATTLE.COM](http://WWW.BBCATTLE.COM)



# BB Cattle Co's

**Annual Spring Sale**  
**Monday, February 9, 2015**  
**Sale Starts at 12:30 p.m.**  
**Lunch available**

**137 HEREFORD BULLS**  
**76 Spring & Winter Calves -61 Coming 2-year old Bulls**  
**26 ANGUS BULLS**  
**14 Spring & Winter Calves -12 Coming 2-year old Bulls**

**Auctioneer: Rick Machado**  
***Special Representatives***

Craig Huffhines.....	American Hereford Association
Mark Holt, AHA.....	208-369-7425
Jack Ward, AHA.....	816-218-2262
Logan Ipsen, WLJ.....	916-947-2392
Mark Frisbie, WLR.....	208-495-2601
Willard Wolf Cross Roads Cattle Co.....	509-994-8051

## ***Terms & Conditions***

Terms of the sale are cash. Each animal will be sold to the highest bidder. Bidding disputes will be settled by the auctioneer. Health certificates and brand clearances will be furnished. Bulls sold in this sale are guaranteed by the owners to be breeders, provided they are properly handled and cared for by the purchaser. Bulls failing to breed after a trial of six months may be returned to the seller if they are in good condition and in compliance with Washington State Health Regulations. If the bull proves a non-breeder, the bull will be replaced, or credit will be issued for the next year's sale. Seller is not liable for bulls lost due to injury or death. All announcements made from the auction block on sale day will take precedence over statements in the catalog or other advertising. We reserve the right to withdraw any sale lot not meeting our specification prior to sale time. All persons who attend the sale do at their own risk. BB Cattle Co nor any other persons connected with the sale assume liability, legal or otherwise, for accidents or loss of property. Anyone wishing to bid who cannot attend the sale may place phone bids by contacting the sale number, Bill, Joe, or any listed sale representative. Your bids will be handled as directed by you and in your best interest.

**SALE DAY NUMBER:509-234-4361**

## ***Delivery***

BB will assist you in the delivery of animals purchased in this sale. Delivery will be made on groups of five or more animals or on purchases of \$5000 or more within this state or adjoining states, all other animals will be delivered or arrangements for delivery will be made at the most reasonable cost.

## **Airlines:**

To Spokane: All National Air Lines  
To Pasco: Delta, Horizon, United Express

## **Motels:**

Connell has two good ones.  
Tumbleweed Motel, (509)234-2081  
M&M Motel, (509)234-8811  
Pasco, 35 miles South, has a number of excellent ones  
Othello, 20 miles west, has two, Best Western-Lincoln Inn, Cabana Motel.

## Welcome to our 2015 Bull Sale!

What exciting times the cattle business is in, with such excitement about the Hereford breed. It's with a lot of pride that we offer you an unparalleled set of bulls. They are without exception the most uniform, eye appealing, rugged, stout and sound set of bulls we have ever offered. This group of bulls has the highest growth numbers that we have ever sold, with many bulls being +100 on yearling weight. We have added some great to new genetics to our bull battery. Purchasing CL 1 Domino 994W, which we feel is one of the great bulls Coopers have raised and his mother CL 1 Dominette 440P ET is without a doubt one of the breed's best cows. We are offering 15 of his sons. BB Exclusive 1026, by 3027, the high selling bull in our 2012 sale at \$25,000 for ½ interest, is the sire of 24 bulls in the sale. He throws calves that are light birth weight and high growth with good carcass numbers, especially marbling. 1050, a bull we purchased from Bill Cox, is a sure fire heifer bull. They are low birth weight calves that are flashy looking with shape and style. This bull is also sired by 3027 and is out of a Harland cow with grand dam being a Mark Donald cow. Still holding true to our roots we're always striving to keep Mark Donald in our program. 3007, 1003 and 1001 made a phenomenal set of calves that will catch an eye and can still compete with the times. The coming two year old bulls are a super group, they are big, heavy boned and rugged and without any doubt the soundest, freest moving we have ever offered.

Though small in numbers our Angus offering is nothing but stellar. The spring and winter calves are lead off by a true herd bull, sired by Ten X , he has a .4 BW with a 101 YW. One would be hard pressed to find a bull with this great of spread. The twelve coming two year olds are as good footed and powerful as a program could ask for.

If you have any questions about anything to do with the sale, be sure to contact us. We appreciate each of our customers and are committed to your success.

Natalie and everyone at BB hope to see YOU on February 9th!

*The Bennetts*

LIVE ON THE INTERNET, LIVE AUDIO, LIVE VIDEO, BIDDING

**LiveAuctions**

**TV**

Our sale will be broadcasted on LiveAuctions.tv.

To view this sale live, simply log onto liveauctions.tv and click on our sale.

If you have any questions you can contact Katie Colyer at 208-599-2962.

Be sure to check our website the end of January for videos of the sale bulls.



**NEW LOCATION**

**Please plan on joining us for our presale dinner on the evening of February 8th at Michael Jay's Restaurant in Connell.**

**5:30 p.m. Social 6:00 p.m. Dinner**

**BB CATTLE CO. RETAINS A FULL ¼ SEMEN INTEREST IN EVERY SALE BULL..** Buyer will take full possession and retain full salvage value on the bull. Bulls collected for A.I. use will be done in the off season at the buyer's convenience with expense paid by BB Cattle Co. Call Bill Bennett 509-551-6102 for more information. Select sale lots will have additional interest/possession retained to be announced sale day.

All Hereford bulls have been parentage verified and DNA tested to be IE Free, HY Free and Diluter Free by GeneSeek Labs. All Angus bulls are guaranteed AM Free, NH Free, CA Free and DD Free.



**BB EXCLUSIVE 3179**

**1 BB EXCLUSIVE 3179**  
Claved 12-7-2013 Bull 42450948 Tattoo B3179

UPS DOMINO 3027  
BB EXCLUSIVE 1026  
43216267 BB MS 013SANDMAN4231

L1 DOMINO 95461  
BB MS 95461 DOMINO 7191 ET  
42929643 BB MS 32F SANDMAN 9149

CL 1 DOMINO 9126J 1ET  
UPS MISS DIAMOND 1353  
TL 32F SANDMAN 013  
BB MS 7Z S LAD 8125  
L1 DOMINO 93469  
L1 DOMINETTE 880467  
BP 146D SANDMAN 32F  
BB MS L1 DOMINO 4095

Act BW	CED	BW	WW	YW	M	M&G	CEM
<b>70</b>	<b>4.1</b>	<b>1.9</b>	<b>56</b>	<b>92</b>	<b>23</b>	<b>51</b>	<b>3.8</b>
SC	FAT	RI	IMF	BMI	CEZ	BII	CHB
<b>1.0</b>	<b>0.033</b>	<b>0.41</b>	<b>0.34</b>	<b>\$23</b>	<b>\$19</b>	<b>\$18</b>	<b>\$32</b>

B3179, a December 7th calf, will lead the sale off followed by a December 6th brother and two more mid November calves. We feel this is a really great set of calves with super EPD's low BW and high YW, and very good carcass numbers. B3179 is a fancy calf, red to the ground. His mother is by a good Miles City bull and 1065's mother. This is definitely a herd bull prospect.



**BB EXCLUSIVE 1026**

**2 BB EXCLUSIVE 3178**  
Claved 12-6-2013 Bull 42450947 Tattoo B3178

UPS DOMINO 3027  
BB EXCLUSIVE 1026  
43216267 BB MS 013SANDMAN 4231

BB 9131 DOMINO 1065  
BB MS 1065 DOMINO 8161  
43117002 BB MS 32F SANDMAN 3050

CL 1 DOMINO 9126J 1ET  
UPS MISS DIAMOND 1353  
TL 32F SANDMAN 013  
BB MS 7Z S LAD 8125  
CL 1 DOMINO 9131J  
BB MS 32FSANDMAN 9149  
BP 146D SANDMAN 32F  
BB MS 9012Y ADV 9108

Act BW	CED	BW	WW	YW	M	M&G	CEM
<b>68</b>	<b>4.1</b>	<b>2.4</b>	<b>64</b>	<b>100</b>	<b>24</b>	<b>56</b>	<b>4.0</b>
SC	FAT	RI	IMF	BMI	CEZ	BII	CHB
<b>0.8</b>	<b>0.032</b>	<b>0.50</b>	<b>0.23</b>	<b>\$20</b>	<b>\$18</b>	<b>\$14</b>	<b>\$33</b>

B3178 is bred alot like Lot 1. I think these two bulls are exactly the same just a matter of which you like best, both are by Exclusive and out of great young cows.



**BB MARK CLASSIC 3171**

**3 BB MARK CLASSIC 3171**  
Calved 11-18-2013 Bull 43450957 Tattoo B3171

NX MARK CLASS 4411  
BB 4411 MARK CLASS 1003 ET  
43218057 BB MS ADV 6001 1ET

CHURCHILL NEON 626S  
BB MS 626 NEON 0096  
43128265 BB MS 285M DOMINO 6049

BBH MARK DOMINO 918  
NX MS CLASSIC 9011  
HH ADVANCE 185A  
BB MS MARK DOM 0253  
GH NEON 17N  
CHURCHILL LADY 346  
CL 1 DOMINO 285M  
BB MS8148MARKDON4029

Act BW	CED	BW	WW	YW	M	M&G	CEM
<b>73</b>	<b>0.3</b>	<b>3.7</b>	<b>49</b>	<b>91</b>	<b>23</b>	<b>47</b>	<b>0.5</b>
SC	FAT	RI	IMF	BMI	CEZ	BII	CHB
<b>0.8</b>	<b>-0.029</b>	<b>0.28</b>	<b>0.01</b>	<b>\$15</b>	<b>\$14</b>	<b>\$13</b>	<b>\$24</b>

B3171 is a very attractive well marked bull, one of the good bulls in the sale. He is sired by a great young Mark Donald bull that has some real good calves in the sale. This bull is a grandson of one of the best cows, BB Ms Mark 0253, ever raised on this ranch. Only beaten once in the showing by her ½ sister who was the Champion heifer at Denver 1982. 1003 has raised his EPD's in one calf crop.



**BB EXCLUSIVE 3167**

**4 BB EXCLUSIVE 3167**  
Calved 11-13-2013 Bull 43450821 Tattoo B3167

UPS DOMINO 3027  
BB EXCLUSIVE 1026  
43216267 BB MS 013 SANDMAN 4231

MONUMENT 3147  
BB MS 3147 MONUMENT 7057  
43021954 M MS ADVANCE 730

CL 1 DOMINO 9126J 1ET  
UPS MISS DIAMOND 1353  
TL 32F SANDMAN 013  
BB MS 7Z S LAD 8125MH  
MH DAKOTA 0230  
MH MISS PATRIOT 971  
HH ADVANCE 379C  
BB MS PATRIOT 3081

Act BW	CED	BW	WW	YW	M	M&G	CEM
<b>70</b>	<b>2.6</b>	<b>3.6</b>	<b>61</b>	<b>106</b>	<b>25</b>	<b>55</b>	<b>-0.6</b>
SC	FAT	RI	IMF	BMI	CEZ	BII	CHB
<b>0.8</b>	<b>0.017</b>	<b>0.47</b>	<b>0.17</b>	<b>\$17</b>	<b>\$15</b>	<b>\$12</b>	<b>\$32</b>

B3167 is another Exclusive calf with a lot of potential we showed him at the county fair and he was the Grand Champion. This calf has great EPD's, 106 YW and he has great carcass EPD's. These bulls have been ultra sounded and were really good. Exclusive is consistent on RI and IMF.





**CL 1 DOMINO 994W**

**5 BB 994 DOMINO 4011**  
 Calved 1-13-2014 Bull 43472183 Tattoo B4011

CL 1 DOMINO 637S 1ET  
 CL 1 DOMINO 994W 1ET  
 42982456 CL 1 DOMINETTE440P 1ET

CJH HARLAND 408  
 BB MS HARLAND 9050  
 43121824 BB MS 124H HOME BLDR 2151

L1 DOMINO 03401  
 CL 1 DOMINETTE 118L  
 CL 1 DOMINO 9126J 1ET  
 CL 1 DOMINETTE 974J  
 HH ADVANCE 9005J  
 CJH L1 DOMINETTE0064  
 BP HOME BUILDER 124H  
 BB MS M DONALD 9183

Act BW	CED	BW	WW	YW	M	M&G	CEM
<b>82</b>	<b>1.5</b>	<b>3.8</b>	<b>51</b>	<b>91</b>	<b>27</b>	<b>52</b>	<b>0.3</b>
SC	FAT	RI	IMF	BMI	CEZ	BII	CHB
<b>1.3</b>	<b>0.032</b>	<b>0.24</b>	<b>0.26</b>	<b>\$21</b>	<b>\$16</b>	<b>\$19</b>	<b>\$27</b>

B4011 is the bull we chose to start the 2014 calves. He is by 994W and a Harland cow, 9050. He is a really attractive calf with red around both eyes and red to the ground. He has the look of a herd bull. This is one bull we will want to get semen on at buyer convenience.



**BB 994 DOMINO 4031**

**7 BB 994 DOMINO 4031**  
 Calved 2-10-2014 Bull 43480966 Tattoo B4031

CL 1 DOMINO 637S 1ET  
 CL 1 DOMINO 994W 1ET  
 42982456 CL 1 DOMINETTE440P 1ET

BB 897 ADVANCE 6074  
 BB MS 6074 ADVANCE 8118  
 43116734 BB MS 3007 MARK DON 6089

L1 DOMINO 03408  
 CL 1 DOMINETTE 118L  
 CL 1 DOMINO 9126J 1ET  
 CL 1 DOMINETTE 974J  
 H5 500 ADVANCE 897  
 BB MS 3B08 SELKIRK 4047  
 BB MARK DONALD 3007  
 BB MS 124H HB 2114

Act BW	CED	BW	WW	YW	M	M&G	CEM
<b>91</b>	<b>-0.6</b>	<b>5.0</b>	<b>45</b>	<b>82</b>	<b>28</b>	<b>50</b>	<b>-1.7</b>
SC	FAT	RI	IMF	BMI	CEZ	BII	CHB
<b>0.9</b>	<b>-0.002</b>	<b>0.31</b>	<b>0.07</b>	<b>\$14</b>	<b>\$12</b>	<b>\$13</b>	<b>\$22</b>

Here again is an outstanding 994W son that has always been one of my favorites. Stout and heavy boned. His dam is a really good cow that is a daughter of one of our best 3007 cows.



**BB 994 DOMINO 4030**

**6 BB 994 DOMINO 4030**  
 Calved 2-10-2014 Bull 43480965 Tattoo B4030

CL 1 DOMINO 637S 1ET  
 CL 1 DOMINO 994W 1ET  
 42982456 CL 1 DOMINETTE440P 1ET

BP 146D SANDMAN 32F  
 BB MS 32F SANDMAN 3209  
 42415064 BB MS STAN LAD 1080

L1 DOMINO 03407  
 CL 1 DOMINETTE 118L  
 CL 1 DOMINO 9126J 1ET  
 CL 1 DOMINETTE 974J  
 BP SANDMAN 146D  
 BP EXTRA LADY 62D  
 BB STANDARD LAD 9502  
 BB MS KERNEL 8340

Act BW	CED	BW	WW	YW	M	M&G	CEM
<b>80</b>	<b>0.3</b>	<b>3.7</b>	<b>47</b>	<b>74</b>	<b>19</b>	<b>43</b>	<b>-0.4</b>
SC	FAT	RI	IMF	BMI	CEZ	BII	CHB
<b>0.7</b>	<b>-0.002</b>	<b>0.45</b>	<b>-0.10</b>	<b>\$15</b>	<b>\$14</b>	<b>\$13</b>	<b>\$19</b>

B4030 is another 994W, these bulls are all thick, heavy boned and rugged. This is a bull that commercial producers dream about. He has a lot of style and thickness and we think you will really like this calf.



**BB 994 DOMINO 4033**

**8 BB 994 DOMINO 4033**  
 Calved 2-12-2014 Bull 43480968 Tattoo B4033

CL 1 DOMINO 637S 1ET  
 CL 1 DOMINO 994W 1ET  
 42982456 CL 1 DOMINETTE440P 1ET

BB 32F SANDMAN 0257  
 BB MS 0257 SANDMAN 5239  
 42664581 BB MS 4209 MARK DON9043

L1 DOMINO 03409  
 CL 1 DOMINETTE 118L  
 CL 1 DOMINO 9126J 1ET  
 CL 1 DOMINETTE 974J  
 BP 145D SANDMAN 32F  
 BB MS LIBERTY 7096  
 BB MARK DON 4209  
 BB MS 4033 LAD 6031

Act BW	CED	BW	WW	YW	M	M&G	CEM
<b>94</b>	<b>-1.5</b>	<b>5.4</b>	<b>53</b>	<b>90</b>	<b>22</b>	<b>49</b>	<b>-1.4</b>
SC	FAT	RI	IMF	BMI	CEZ	BII	CHB
<b>1.0</b>	<b>0.008</b>	<b>0.41</b>	<b>0.07</b>	<b>\$17</b>	<b>\$12</b>	<b>\$15</b>	<b>\$25</b>

B4033 is the fourth bull in a row out of 994, he is big and long bodied with a lot of power. The brothers to these bulls at Coopers have been continuously the high sellers at the last two sales. The 144Y bull selling for \$45,000. B4033's grandmother 9043B was one of the best Mark Donald cows we have ever had.



**9 BB EXCLUSIVE 4066**  
Calved 3-10-2014 Bull 43494564 Tattoo B4066

UPS DOMINO 3027  
BB EXCLUSIVE 1026  
43216267 BB MS 013 SANDMAN 4231

CHURCHILL NEON 626S  
BB MS 626 NEON 0100  
43128269 BB MS 9131 DOMINO 5162

CL 1 DOMINO 9126J 1ET  
UPS MISS DIAMOND 1353  
TL 32F SANDMAN 013  
BB MS 7Z S LAD 8125  
GH NEON 17N  
CHURCHILL LADY 346  
CL 1 DOMINO 9131J  
BB MS M DONALD 3121

Act BW	CED	BW	WW	YW	M	M&G	CEM
<b>83</b>	<b>2.5</b>	<b>4.0</b>	<b>63</b>	<b>109</b>	<b>27</b>	<b>58</b>	<b>2.7</b>
SC	FAT	RI	IMF	BMI	CEZ	BII	CHB
<b>0.9</b>	<b>0.003</b>	<b>0.59</b>	<b>0.30</b>	<b>\$21</b>	<b>\$16</b>	<b>\$15</b>	<b>\$37</b>

B4066, an Exclusive 1026, is one of the top bulls in the sale, he has herd bull written all over him. Exclusive was the top bull in our 2012 sale, selling for \$25,000 for half interest to MP Livestock. 1026 has gone on and sired a great set of calves and looks great himself. He had the high marbling bull in last years sale. 1026 is a half brother to Sensation a super low birth bull and our 1050 bull that has several bulls in the sale. All of these bulls are sired by 3027 an AI bull and they all are proven low birth bulls. 4066's mother is a beautiful cow great udder and lots of milk, her sire 626S has been our top sire for several years. We will definitely want to get semen on this bull at buyers convenience.



**10 BB 159 DOMINO 4064**  
Calved 3-9-2014 Bull 43494562 Tattoo B4064

CL 1 DOMINO 993W  
CL 1 DOMINO 159Y 1ET  
43216160 CL 1 DOMINETTE 6159S

CHURCHILL NEON 626S  
BB MS 626 NEON 0099  
43128268 BB MS1020 MARK ADV 4031

CL 1 DOMINO 637S 1ET  
CL 1 DOMINETTE 5142R  
HH ADVANCE 3113N 1ET  
CL 1 DOMINETTE 4200P ET  
GH NEON 17N  
CHURCHILL LADY 346  
BB MARK DONALD 1020  
BB MS 6149 CLASS 2196

Act BW	CED	BW	WW	YW	M	M&G	CEM
<b>76</b>	<b>1.1</b>	<b>3.1</b>	<b>57</b>	<b>92</b>	<b>30</b>	<b>58</b>	<b>1.6</b>
SC	FAT	RI	IMF	BMI	CEZ	BII	CHB
<b>0.8</b>	<b>-0.003</b>	<b>0.45</b>	<b>0.00</b>	<b>\$15</b>	<b>\$14</b>	<b>\$11</b>	<b>\$26</b>

Here is a really attractive calf sired by the Cooper bull 159Y that we bought at Cooper's 2012 sale. This calf has the look of a herd bull also with great EPD's. BB Mark Dom 704 is the grandsire of his mother for those of you that remember the good old 704.



**11 BB 994 DOMINO 4050**  
Calved 2-27-2014 Bull 43450983 Tattoo B4050

CL 1 DOMINO 637S 1ET  
CL 1 DOMINO 994W 1ET  
42982456 CL 1 DOMINETTE440P 1ET  
  
CX ADVANCE 112  
BB MS 112 ADVANCE 9045  
43129613 BB MS 32F SANDMAN 1017

L1 DOMINO 03415  
CL 1 DOMINETTE 118L  
CL 1 DOMINO 9126J 1ET  
CL 1 DOMINETTE 974J  
H5 500 ADVANCE 897  
CX MISS MARK DOM 548  
BP 146D SANDMAN 32F  
BB MS DOM 3001 1ET

Act BW	CED	BW	WW	YW	M	M&G	CEM
<b>86</b>	<b>0.8</b>	<b>4.0</b>	<b>51</b>	<b>85</b>	<b>25</b>	<b>50</b>	<b>-0.3</b>
SC	FAT	RI	IMF	BMI	CEZ	BII	CHB
<b>0.9</b>	<b>0.008</b>	<b>0.52</b>	<b>0.06</b>	<b>\$17</b>	<b>\$14</b>	<b>\$15</b>	<b>\$25</b>

A very attractive well marked 994W. There is no place where you can tie this many half brothers together out of this great of a sire. I would love to have a group of commercial cows to breed to these 994W sons. There is no place in the Hereford breed to put such uniform powerful set of bulls together. Look at his RI EPD. He has herd bull potential.

**12 BB 994 DOMINO 4035**  
Calved 2-15-2014 Bull 43513142 Tattoo B4035

CL 1 DOMINO 637S 1ET  
CL 1 DOMINO 994W 1ET  
42982456 CL 1 DOMINETTE440P 1ET  
  
BB 9131 DOMINO 1065  
BB MS 1065 DOMINO 7153  
43021993 BB MS LANDMARK 3115

L1 DOMINO 03411  
CL 1 DOMINETTE 118L  
CL 1 DOMINO 9126J 1ET  
CL 1 DOMINETTE 974J  
CL 1 DOMINO 9131J  
BB MS32FSANDMAN9149  
BP LANDMARK 126H  
BB MS 753 TARHEEL 9069

Act BW	CED	BW	WW	YW	M	M&G	CEM
<b>75</b>	<b>0.7</b>	<b>4.3</b>	<b>50</b>	<b>84</b>	<b>25</b>	<b>50</b>	<b>-1.2</b>
SC	FAT	RI	IMF	BMI	CEZ	BII	CHB
<b>0.8</b>	<b>0.014</b>	<b>0.32</b>	<b>0.04</b>	<b>\$15</b>	<b>\$13</b>	<b>\$13</b>	<b>\$23</b>

A great thick heavy rear ended, stylish 994 son. He has the look of a stock bull. He is out of a good 1065 cow.

**13 BB 1108 DOMINO 4049**  
Calved 2-26-2014 Bull 43480982 Tattoo B4049

CL 1 DOMINO 9105W  
CL1 DOMINO 1108Y 1ET  
43189548 CL 1 DOMINETTE 617S

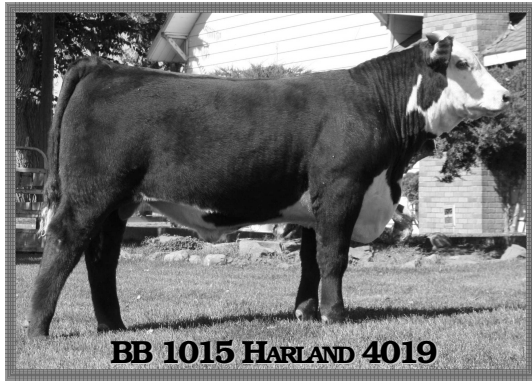
BB 5097 DOMINO 7052  
BB MS 7052 DOMINO 0047  
43128204 BB MS 3007 MARK DON 8020

CL 1 DOMINO 732T  
CL 1 DOMINETTE 591R 1ET  
HH ADVANCE 3113N 1ET  
CL 1 DOMINETTE 4180P  
BB 1083 DOMINO 5097  
BB MS 1065 DOMINO 5014  
BB MARK DONALD 3007  
BB MS 8009 WASH 1133

Act BW	CED	BW	WW	YW	M	M&G	CEM
<b>75</b>	<b>0.9</b>	<b>2.2</b>	<b>53</b>	<b>73</b>	<b>36</b>	<b>62</b>	<b>1.8</b>
SC	FAT	RI	IMF	BMI	CEZ	BII	CHB
<b>0.7</b>	<b>0.024</b>	<b>0.41</b>	<b>-0.05</b>	<b>\$12</b>	<b>\$14</b>	<b>\$9</b>	<b>\$21</b>

B4049 is a bull calf that always looked like a herd sire. His sire was my pick out of all the bulls that sold in Cooper's 2012 sale 1108Y. 1108Y's dam is one of the best cows that Cooper has raised. Actual birth weight 75 pounds.





**BB 1015 HARLAND 4019**

**14 BB 1015 HARLAND 4019**

Calved 1-20-2014 Bull 43472186 Tattoo B4019

CJH HARLAND 408  
BB HARLAND 1015  
43189197 BB MS 626S NEON 9020B

SR SAGA 239W  
BB MS 239 SAGA 1074  
43208539 BB MS 9131 DOMINO 8021

HH ADVANCE 9005J  
CJH L1 DOMINETTE 0064  
CHURCHILL NEON 626S  
BB MS 285M DOM 6102  
CJH HARLAND 408  
SR ROSA 323  
CL 1 DOMINO 9131J  
BB MS 4033 LAD 1218

Act BW	CED	BW	WW	YW	M	M&G	CEM
<b>80</b>	<b>3.1</b>	<b>3.0</b>	<b>55</b>	<b>93</b>	<b>27</b>	<b>54</b>	<b>2.5</b>
SC	FAT	RI	IMF	BMI	CEZ	BII	CHB
<b>1.1</b>	<b>-0.001</b>	<b>0.47</b>	<b>0.12</b>	<b>\$21</b>	<b>\$17</b>	<b>\$17</b>	<b>\$29</b>

B4019 is one of the most attractive bulls in the sale, moderate birth EPD's with an actual birth weight of 80 pounds. This bull has herd bull written all over him, he has Harland 408 on both sides of his pedigree.



**BB 1050 ADVANCE 4021**

**15 BB 1050 ADVANCE 4021**

Calved 1-24-2014 Bull 43472257 Tattoo B4021

UPS DOMINO 3027  
CX 3027 ADVANCE 1050  
43242410 MCR HARLANDS MARK 883ET

BOWEN 3027 DOMINO 018  
BB MS 018 DOMINO 2036  
43295118 BB MS 626 NEON 0031

CL 1 DOMINO 9126J 1ET  
UPS MISS DIAMOND 1353  
CJH HARLAND 408  
MCR MARK DOM 4125  
UPS DOMINO 3027  
BOWEN 3147 BROOK 824  
CHURCHILL NEON 626S  
BB MS 4209 M DON 2166

Act BW	CED	BW	WW	YW	M	M&G	CEM
<b>80</b>	<b>4.5</b>	<b>2.6</b>	<b>61</b>	<b>97</b>	<b>30</b>	<b>60</b>	<b>3.2</b>
SC	FAT	RI	IMF	BMI	CEZ	BII	CHB
<b>1.0</b>	<b>0.006</b>	<b>0.49</b>	<b>0.12</b>	<b>\$20</b>	<b>\$18</b>	<b>\$15</b>	<b>\$31</b>

B4021 is one of the top herd bull prospects in the sale. He is moderate framed really thick and attractive with red around both eyes. Low birth weight EPD of +2.6. His sire is the best heifer bull we have used being out of 3027 and a Harland cow and she being out of a Mark Donald cow. This bull has attracted quite a lot of comments because of his picture in our advertisement. His picture looks attractive. He is a good one with great EPD's low BW and high YW. His two year old mother is one of the favorites around BB.



**BB 0130 DOMINO 4047**

**16 BB 0130 DOMINO 4047**

Calved 2-25-2014 Bull 43495834 Tattoo B4047

CL 1 DOMINO 860U  
CL1 DOMINO 0130X 1ET  
43082390 CL 1 DOMINETTE440P 1ET

BJ L1 DOMINO 2637  
BB MS BJ DOMINO 9086  
43094291 BB MS 1065 DOM 7116

CL DOMINO 637S 1 ET  
CL 1 DOMINETTE 5142R  
CL 1 DOMINO 9126J 1ET  
CL 1 DOMINETTE 974J  
XP L1 DOMINO 01050  
BJ L1 DOM 2069  
BB 9131 DOM 1065  
BB MS 4209 MDON 0090

Act BW	CED	BW	WW	YW	M	M&G	CEM
<b>84</b>	<b>0.7</b>	<b>2.9</b>	<b>55</b>	<b>91</b>	<b>28</b>	<b>56</b>	<b>-0.2</b>
SC	FAT	RI	IMF	BMI	CEZ	BII	CHB
<b>1.0</b>	<b>0.023</b>	<b>0.37</b>	<b>0.06</b>	<b>\$16</b>	<b>\$14</b>	<b>\$14</b>	<b>\$23</b>

B4047 is one of the favorite calves because of his disposition. Joe's little granddaughter Natalie can lead this calf any place and show him. Besides having a great disposition he is a great calf. He is sired by the really good Cooper bull 0130X that was the top selling bull in Coopers 2011 sale. We love the calves out of 0130X especially the daughters. This calf would make a great herd sire especially for a small breeder that needs low BW and lots of growth and a very easy calf to handle.



**BB ADVANTAGE 4010**

**17 BB ADVANTAGE 4010**

Calved 1-12-2014 Bull 43472178 Tattoo B4010

CHURCHILL NEON 626S  
BB 626 ADVANTAGE 1059  
43198754 BB MS 4033 LAD 5065

BJ L1 DOMINO 2007 ET  
BB MS 2007 BJ DOMINO 0023  
43128138 BB MS LANDMARK 2043

GH NEON 17N  
CHURCHILL LADY 346  
BB 7Z STD LAD 4033  
BB MS SANDMAN 0033  
XP L1 DOMINO 01050  
CL 1 DOMINETTE 8184H  
BP LANDMARK 126H  
BB MS 66U M DOM 9040

Act BW	CED	BW	WW	YW	M	M&G	CEM
<b>83</b>	<b>-1.2</b>	<b>4.5</b>	<b>56</b>	<b>93</b>	<b>19</b>	<b>47</b>	<b>1.0</b>
SC	FAT	RI	IMF	BMI	CEZ	BII	CHB
<b>0.7</b>	<b>-0.013</b>	<b>0.43</b>	<b>0.06</b>	<b>\$16</b>	<b>\$13</b>	<b>\$13</b>	<b>\$27</b>

B4010 may be the thickest calf in the sale. He is very attractive calf with a great muscle pattern. He is sired by our Advantage bull, Advantage 1059 sires powerful attractive calves.



# 18 BB 3007 MARK DONALD 4006

Calved 1-8-2014 Bull 43520890 Tattoo B4006

BB MARK DONALD 386  
BB MARK DONALD 3007  
42364214 BB MS M CLASSIC 8150

CL 1 DOMINO 6136S 1ET  
C MS DOMINO 9128  
C 4011 MS DOM 7103

Act BW	CED	BW	WW	YW	M	M&G	CEM
<b>84</b>	<b>2.7</b>	<b>2.6</b>	<b>41</b>	<b>64</b>	<b>30</b>	<b>50</b>	<b>0.0</b>
SC	FAT	RI	IMF	BMI	CEZ	BII	CHB
<b>0.6</b>	<b>-0.026</b>	<b>0.35</b>	<b>0.05</b>	<b>\$15</b>	<b>\$16</b>	<b>\$13</b>	<b>\$21</b>

If you are looking for a real prospect by 3007 here he is, out of a real good Colyer cow by a Cooper bull. Well marked thick and stout.

# 19 BB 1065 DOMINO 4069

Calved 3-12-2014 Bull 43494567 Tattoo B4069

CL 1 DOMINO 9131J  
BB 9131 DOMINO 1065  
42173637 BB MS 32F SANDMAN 9149

BB 5097 DOMINO 7052  
BB MS 7052 DOMINO 0133  
43128314 BB MS 3007 MARK DON 8109

Act BW	CED	BW	WW	YW	M	M&G	CEM
<b>78</b>	<b>1.2</b>	<b>3.7</b>	<b>56</b>	<b>83</b>	<b>27</b>	<b>54</b>	<b>1.2</b>
SC	FAT	RI	IMF	BMI	CEZ	BII	CHB
<b>0.4</b>	<b>0.005</b>	<b>0.32</b>	<b>0.05</b>	<b>\$13</b>	<b>\$14</b>	<b>\$9</b>	<b>\$25</b>

We still use 1065 each year so his EPD's will be current and this dude will not disappoint, he looks like many of the thick rugged 1065's of the past.

# 20 BB EXCLUSIVE 4061

Calved 3-8-2014 Bull 43494559 Tattoo B4061

UPS DOMINO 3027  
BB EXCLUSIVE 1026  
43216267 BB MS 013 SANDMAN 4231

CHURCHILL NEON 626S  
BB MS 626 NEON 8017  
43116867 BB MS 4033 LAD 4099

Act BW	CED	BW	WW	YW	M	M&G	CEM
<b>77</b>	<b>0.4</b>	<b>2.4</b>	<b>54</b>	<b>104</b>	<b>26</b>	<b>53</b>	<b>3.3</b>
SC	FAT	RI	IMF	BMI	CEZ	BII	CHB
<b>0.4</b>	<b>-0.030</b>	<b>0.76</b>	<b>0.06</b>	<b>\$13</b>	<b>\$14</b>	<b>\$8</b>	<b>\$31</b>

One of the real attractive calves out of one of the best cows on the ranch. She is the dam of the 3057 Monument bull that sold to Richard Lawson last year.

# 21 BB EXCLUSIVE 4065

Calved 3-10-2014 Bull 43494563 Tattoo B4065

UPS DOMINO 3027  
BB EXCLUSIVE 1026  
43216267 BB MS 013 SANDMAN 4231

CHURCHILL NEON 626S  
BB MS 626 NEON 1068  
43198626 BB MS 5059 DOMINO 7061

Act BW	CED	BW	WW	YW	M	M&G	CEM
<b>79</b>	<b>3.1</b>	<b>3.3</b>	<b>60</b>	<b>104</b>	<b>30</b>	<b>60</b>	<b>3.0</b>
SC	FAT	RI	IMF	BMI	CEZ	BII	CHB
<b>0.9</b>	<b>0.003</b>	<b>0.63</b>	<b>0.31</b>	<b>\$21</b>	<b>\$17</b>	<b>\$15</b>	<b>\$36</b>

# 22 BB EXCLUSIVE 4058

Calved 3-5-2014 Bull 43494551 Tattoo B4058

UPS DOMINO 3027  
BB EXCLUSIVE 1026  
43216267 BB MS 013 SANDMAN 4231

CHURCHILL NEON 626S  
BB MS 626 NEON 1054  
43198597 BB MS 6149 CLASSIC 3159

CL 1 DOMINO 9126J 1ET  
UPS MISS DIAMOND 1353  
TL 32F SANDMAN 013  
BB MS 7Z S LAD 8125  
GH NEON 17N  
CHURCHILL LADY 346  
BB MARK CLASSIC 6149  
BB MS 027 M DON 0095

Act BW	CED	BW	WW	YW	M	M&G	CEM
<b>74</b>	<b>3.7</b>	<b>1.7</b>	<b>51</b>	<b>88</b>	<b>26</b>	<b>51</b>	<b>3.9</b>
SC	FAT	RI	IMF	BMI	CEZ	BII	CHB
<b>0.7</b>	<b>0.002</b>	<b>0.59</b>	<b>0.30</b>	<b>\$20</b>	<b>\$18</b>	<b>\$15</b>	<b>\$31</b>

Another carbon copy of the calf before. Tie these calves together and they give you attractive calves with great numbers across the spectrum.

# 23 BB 626 NEON 4062

Calved 3-8-2014 Bull 43494560 Tattoo B4062

GH NEON 17N  
CHURCHILL NEON 626S  
42696418 CHURCHILL LADY 346

BB 5097 DOMINO 7052  
BB MS 7052 DOMINO 0039  
43128174 BB MS 5105 DOM 8036

GH DIFFERENCE BRITISHER 45L  
GH SIR SIMBA LASS 10 7K  
H5 9012Y ADVANCE 501  
CHURCHILL LADY 170  
BB 1083 DOMINO 5097  
BB MS 1065 DOMINO 5014  
BB 1065 DOMINO 5105  
BB MS 767G ADVANCE 4080

Act BW	CED	BW	WW	YW	M	M&G	CEM
<b>76</b>	<b>1.4</b>	<b>2.6</b>	<b>52</b>	<b>96</b>	<b>25</b>	<b>51</b>	<b>2.8</b>
SC	FAT	RI	IMF	BMI	CEZ	BII	CHB
<b>0.4</b>	<b>-0.030</b>	<b>0.62</b>	<b>0.10</b>	<b>\$14</b>	<b>\$14</b>	<b>\$9</b>	<b>\$30</b>

Here is a great calf by 626S, he never lets you down. This guy has looked good from the day he was born. Great EPD's and a great calf. He could sure be a herd bull for someone.

# 24 BB 1050 ADVANCE 4056

Calved 3-4-2014 Bull 43494548 Tattoo B4056

UPS DOMINO 3027  
CX 3027 ADVANCE 1050  
43242410 MCR HARLAND MARK 883ET

CHURCHILL NEON 7127T ET  
BB MS 7127 NEON 2064  
43302535 BB MS 32F SANDMAN 3209

CL 1 DOMINO 9126J 1ET  
UPS MISS DIAMOND 1353  
CJH HARLAND 408  
MCR MARK DOMINET 4125  
GH NEON 17N  
CHURCHILL LADY 303  
BP 146D SANDMAN 32F  
BB MS STAN LAD 1080

Act BW	CED	BW	WW	YW	M	M&G	CEM
<b>68</b>	<b>4.2</b>	<b>2.1</b>	<b>62</b>	<b>91</b>	<b>23</b>	<b>54</b>	<b>4.4</b>
SC	FAT	RI	IMF	BMI	CEZ	BII	CHB
<b>0.9</b>	<b>0.003</b>	<b>0.48</b>	<b>0.04</b>	<b>\$21</b>	<b>\$19</b>	<b>\$15</b>	<b>\$30</b>

B4056 is one of the thickest calves I've seen this year, he should be a heifer bull and I think he would sire show cattle that would be hard to beat. I think this bull would sire show steers that compete with the clubbys and leave you with a great set of females.

# 25 BB 1050 ADVANCE 4044

Calved 2-21-2014 Bull 43480978 Tattoo B4044

UPS DOMINO 3027  
CX 3027 ADVANCE 1050  
43242410 MCR HARLAND MARK 883ET

BB MARK DONALD 3007  
BB MS 3007 MARK DON 2004  
43273714 BB MS 441 MARK DON 3035

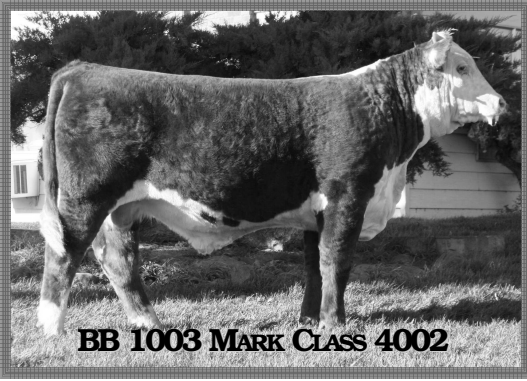
CL 1 DOMINO 9126J 1ET  
UPS MISS DIAMOND 1353  
CJH HARLAND 408  
MCR MARK DOMINET 4125  
BB MARK DONALD 386  
BB MS M CLASSIC 8150  
SR PASSAGE 441  
BB MS WASH 8085

Act BW	CED	BW	WW	YW	M	M&G	CEM
<b>78</b>	<b>3.1</b>	<b>3.4</b>	<b>52</b>	<b>83</b>	<b>30</b>	<b>56</b>	<b>2.3</b>
SC	FAT	RI	IMF	BMI	CEZ	BII	CHB
<b>1.0</b>	<b>-0.009</b>	<b>0.33</b>	<b>0.09</b>	<b>\$19</b>	<b>\$17</b>	<b>\$15</b>	<b>\$26</b>

This is a solid red calf that will make a great heifer bull out of an out-standing 3007 first calf heifer.

**6** B4065 is out of Exclusive and a 626S daughter we have several of them in the sale, that gives you moderate BW, lots of growth and excellent carcass EPD's.





## 26 BB 1003 MARK CLASS 4002

Calved 1-6-2014 Bull 43472151 Tattoo B4002

NX MARK CLASS 4411  
BB 4411 MARK CLASS 1003 ET  
43218057 BB MS ADV 6001 1ET

BB MARK DONALD 3007  
BB MS 3007 MARK DON 0043  
43128197 BB MS 3007 MARK DON 6043

BBH MARK DOMINO 918  
NX MS CLASSIC 9011  
HH ADVANCE 185A  
BB MS MARK DOM 0253  
BB MARK DONALD 386  
BB MS M CLASSIC 8150  
BB MARK DONALD 3007  
BB MS013 SANDMAN 2263

Act BW	CED	BW	WW	YW	M	M&G	CEM
<b>83</b>	<b>1.0</b>	<b>2.9</b>	<b>38</b>	<b>57</b>	<b>25</b>	<b>44</b>	<b>-0.6</b>
SC	FAT	RI	IMF	BMI	CEZ	BII	CHB
<b>0.7</b>	<b>-0.033</b>	<b>0.16</b>	<b>-0.02</b>	<b>\$15</b>	<b>\$15</b>	<b>\$15</b>	<b>\$17</b>

B4002 leads off a set of bulls that are big rugged range bulls. B4002's sire 1003, is out of old genetics that did a great job for us in the past. 1003 and B1001 go back to the best Mark Donald cattle we ever used and he is going to be a really great bull as you will see by his calves. 4002 has one of the most interesting pedigrees you will find 4411 and 3007 twice. This is a herd bull prospect for anyone looking for Mark Donald blood lines.

## 27 BB 1003 MARK CLASS 4005

Calved 1-7-2014 Bull 43472154 Tattoo B4005

NX MARK CLASS 4411  
BB 4411 MARK CLASS 1003 ET  
43218057 BB MS ADV 6001 1ET

BB MARK DONALD 4209  
BB MS 4209 MARK DON 1077  
42173810 BB MS 4177 6191

BBH MARK DOMINO 918  
NX MS CLASSIC 9011  
HH ADVANCE 185A  
BB MS MARK DOM 0253  
GVR MARK DON 933  
BB MS KERNEL 1249  
BB 7Z STD LAD 4177  
BB MS 9410 2003 1ET

Act BW	CED	BW	WW	YW	M	M&G	CEM
<b>86</b>	<b>-2.0</b>	<b>5.0</b>	<b>52</b>	<b>84</b>	<b>17</b>	<b>43</b>	<b>-0.4</b>
SC	FAT	RI	IMF	BMI	CEZ	BII	CHB
<b>0.8</b>	<b>-0.014</b>	<b>0.06</b>	<b>-0.07</b>	<b>\$14</b>	<b>\$12</b>	<b>\$13</b>	<b>\$21</b>

B4005, what a bull, big rugged sound and what a pedigree, he is out of the oldest cow on the place born in 2001. She would be the last daughter of 4209, the Mark Donald carcass bull, he sired several "steer of merit" steers at the local steer shows. His mother 1077B is one tough old girl, she holds her own with the rest of the cows and she is big thick and heavy boned.

## 28 BB 994 DOMINO 4012

Calved 1-14-2014 Bull 43472184 Tattoo B4012

CL 1 DOMINO 637S 1ET  
CL 1 DOMINO 994W 1ET  
42982456 CL 1 DOMINETTE440P 1ET

MH MONUMENT 3147  
BB MS MONUMENT 5037  
42582112 BB MS WASH 8159

L1 DOMINO 03402  
CL 1 DOMINETTE 118L  
CL 1 DOMINO 9126J 1ET  
CL 1 DOMINETTE 974J  
MH DAKOTA 0230  
MH MISS PATRIOT 971  
BB WASHINGTON 2041  
BB MS KERNEL 1065

Act BW	CED	BW	WW	YW	M	M&G	CEM
<b>81</b>	<b>0.2</b>	<b>3.2</b>	<b>39</b>	<b>71</b>	<b>24</b>	<b>44</b>	<b>-4.0</b>
SC	FAT	RI	IMF	BMI	CEZ	BII	CHB
<b>0.5</b>	<b>0.014</b>	<b>0.28</b>	<b>0.02</b>	<b>\$10</b>	<b>\$12</b>	<b>\$10</b>	<b>\$17</b>

B4012 is a real thick square made 994W with pigment. Moderate in frame and a very nice looking calf.

## 29 BB 994 DOMINO 4038

Calved 2-16-2014 Bull 43480972 Tattoo B4038

CL 1 DOMINO 637S 1ET  
CL 1 DOMINO 994W 1ET  
42982456 CL 1 DOMINETTE440P 1ET

CHURCHILL NEON 626S  
BB MS 626 NEON 8141  
43116929 BB MS 9131 DOMINO 5186

L1 DOMINO 03412  
CL 1 DOMINETTE 118L  
CL 1 DOMINO 9126J 1ET  
CL 1 DOMINETTE 974J  
GH NEON 17N  
CHURCHILL LADY 346  
CL 1 DOMINO 9131J  
BB MS 8148 MDOM 3082

Act BW	CED	BW	WW	YW	M	M&G	CEM
<b>92</b>	<b>-0.5</b>	<b>5.3</b>	<b>56</b>	<b>103</b>	<b>32</b>	<b>60</b>	<b>-1.6</b>
SC	FAT	RI	IMF	BMI	CEZ	BII	CHB
<b>0.9</b>	<b>-0.014</b>	<b>0.48</b>	<b>0.12</b>	<b>\$15</b>	<b>\$12</b>	<b>\$11</b>	<b>\$30</b>

B4038 is out of WT's cow and he is a big rugged 994W. In my opinion this calf is a real range bull with a mother with 107 YW EPD. You won't find may of them in the country and excellent carcass EPD's.

The next 4 bulls are all big rugged 994W's out of super BB cows these are the ultimate in what I would want my range bulls to look like. Great growth and carcass EPD's.

## 30 BB 994 DOMINO 4022

Calved 2-1-2014 Bull 43480957 Tattoo B4022

CL 1 DOMINO 637S 1ET  
CL 1 DOMINO 994W 1ET  
42982456 CL 1 DOMINETTE440P 1ET

CHURCHILL NEON 626S  
BB MS 626S NEON 9027  
43117056 BB MS 3007 MRK DON 6060

L1 DOMINO 03403  
CL 1 DOMINETTE 118L  
CL 1 DOMINO 9126J 1E T  
CL 1 DOMINETTE 974J  
GH NEON 17N  
CHURCHILL LADY 346  
BB MARK DONALD 3007  
BB MS 637 ADV 9205

Act BW	CED	BW	WW	YW	M	M&G	CEM
<b>83</b>	<b>0.7</b>	<b>3.5</b>	<b>50</b>	<b>92</b>	<b>30</b>	<b>55</b>	<b>-0.7</b>
SC	FAT	RI	IMF	BMI	CEZ	BII	CHB
<b>0.9</b>	<b>-0.010</b>	<b>0.49</b>	<b>0.12</b>	<b>\$16</b>	<b>\$14</b>	<b>\$13</b>	<b>\$27</b>

## 31 BB 994 DOMINO 4040

Calved 2-17-2014 Bull 43480974 Tattoo B4040

CL 1 DOMINO 637S 1ET  
CL 1 DOMINO 994W 1ET  
42982456 CL 1 DOMINETTE440P 1ET

CL 1 DOMINO 9131J  
BB 9131 DOMINO 6032  
42684228 BB MS0135 MARK DOM 3320

L1 DOMINO 03413  
CL 1 DOMINETTE 118L  
CL 1 DOMINO 9126J 1ET  
CL 1 DOMINETTE 974J  
CL 1 DOMINO 5131J  
CL 1 DOMINETTE 4148  
BB 4209 MARK DOM0135  
BB MS KERNEL 2007

Act BW	CED	BW	WW	YW	M	M&G	CEM
<b>88</b>	<b>0.8</b>	<b>4.3</b>	<b>44</b>	<b>79</b>	<b>27</b>	<b>49</b>	<b>-2.2</b>
SC	FAT	RI	IMF	BMI	CEZ	BII	CHB
<b>0.9</b>	<b>0.012</b>	<b>0.18</b>	<b>0.08</b>	<b>\$15</b>	<b>\$14</b>	<b>\$14</b>	<b>\$21</b>

## 32 BB 994 DOMINO 4026

Calved 2-7-2014 Bull 43480961 Tattoo B4026

CL 1 DOMINO 637S 1ET  
CL 1 DOMINO 994W 1ET  
42982456 CL 1 DOMINETTE440P 1ET

BB MARK DONALD 3007  
BB MS 3007 MARK DON 5116  
42601070 BB MS 4209 MARK DON 1257

L1 DOMINO 03404  
CL 1 DOMINETTE 118L  
CL 1 DOMINO 9126J 1ET  
CL 1 DOMINETTE 974J  
BB MARK DONALD 386  
BB MS M CLASSIC 8150  
BB MARK DONALD 4209  
BB MS 1267 DUKE 4205

Act BW	CED	BW	WW	YW	M	M&G	CEM
<b>92</b>	<b>-1.1</b>	<b>4.8</b>	<b>44</b>	<b>73</b>	<b>26</b>	<b>48</b>	<b>-2.4</b>
SC	FAT	RI	IMF	BMI	CEZ	BII	CHB
<b>0.9</b>	<b>-0.007</b>	<b>0.38</b>	<b>0.04</b>	<b>\$15</b>	<b>\$12</b>	<b>\$15</b>	<b>\$21</b>

### 33 BB 994 DOMINO 4028

Calved 2-8-2014 Bull 43480963 Tattoo B4028

CL 1 DOMINO 637S 1ET  
CL 1 DOMINO 994W 1ET  
42982456 CL 1 DOMINETTE440P 1ET

CL 1 DOMINO 9131J  
BB MS 9131 DOMINO 9127  
43117125 BB MS MONUMENT 7035

L1 DOMINO 03405  
CL 1 DOMINETTE 118L  
CL 1 DOMINO 9126J 1ET  
CL 1 DOMINETTE 974J  
CL 1 DOMINO 5131E  
CL 1 DOMINETTE 4148  
MH MONUMENT 3147  
BB MS 32F SANDMAN 0016

Act BW	CED	BW	WW	YW	M	M&G	CEM
<b>86</b>	<b>0.6</b>	<b>4.7</b>	<b>45</b>	<b>81</b>	<b>27</b>	<b>50</b>	<b>-3.1</b>
SC	FAT	RI	IMF	BMI	CEZ	BII	CHB
<b>0.7</b>	<b>0.013</b>	<b>0.31</b>	<b>0.06</b>	<b>\$13</b>	<b>\$12</b>	<b>\$11</b>	<b>\$21</b>

### 34 BB 626 NEON 4036

Calved 2-15-2014 Bull 43480970 Tattoo B4036

GH NEON 17N  
CHURCHILL NEON 626S  
42696418 CHURCHILL LADY 346

MDA MARK DON 2056  
BB MS 2056 MARK DON 5141  
42601096 BB MS MARK DON 2112

GH DIFFERENCE BRITISHER 45L  
GH SIR SIMBA LASS 107K  
H5 9012Y ADVANCE 501  
CHURCHILL LADY 170  
BB MARK DONALD 386  
SGJ MARKETTE 9623  
BB MARK DONALD 4209  
BB MS SELKIRK 1306

Act BW	CED	BW	WW	YW	M	M&G	CEM
<b>85</b>	<b>-2.5</b>	<b>5.5</b>	<b>55</b>	<b>97</b>	<b>23</b>	<b>51</b>	<b>1.1</b>
SC	FAT	RI	IMF	BMI	CEZ	BII	CHB
<b>0.5</b>	<b>-0.032</b>	<b>0.56</b>	<b>-0.05</b>	<b>\$12</b>	<b>\$10</b>	<b>\$9</b>	<b>\$26</b>

B4036 is one more really thick square made calf out of old 626S. They are the kind!

**Lot 35-38** These 4 bull calves are all sired by a very unique bred bull. We bred Jay's donor cow to PHR Mark Bushman 4, a bull used at Selkirk Herefords in the 60's he was the sire of 427's dam, that shows you how far back we went to get some very solid carcass cattle. He looks like the old Mark Donald 77's. This reduces their EPD's but didn't take any size and ruggedness from them. We are anxious to see how their carcass numbers will be. They look like Mark Donald, Selkirk cattle.

### 35 BB SUPREMACY 4013

Calved 1-15-2014 Bull 43472185 Tattoo B4013

PHR MARK BUSHMAN 4  
BB SUPREMACY 1001 ET  
43187073 BB MS MARK 5100

SR SAGA 429W  
BB MS 429 SAGA 1027  
43198536 BB MS 626S NEON 9034

COURT BUSHMAN 17R  
HH MISS MARK A1  
SR BIG ARTHUR H201  
BB MS M CLASSIC 8150  
CJH HARLAND 408  
SR SABRINA 983  
CHURCHILL NEON 626S  
BB MS 1065 DOMINO 6078

Act BW	CED	BW	WW	YW	M	M&G	CEM
<b>80</b>	<b>1.4</b>	<b>2.6</b>	<b>40</b>	<b>64</b>	<b>20</b>	<b>40</b>	<b>0.9</b>
SC	FAT	RI	IMF	BMI	CEZ	BII	CHB
<b>0.7</b>	<b>0.019</b>	<b>0.24</b>	<b>-0.01</b>	<b>\$15</b>	<b>\$16</b>	<b>\$14</b>	<b>\$16</b>

### 36 BB 1001 SUPREMACY 4032

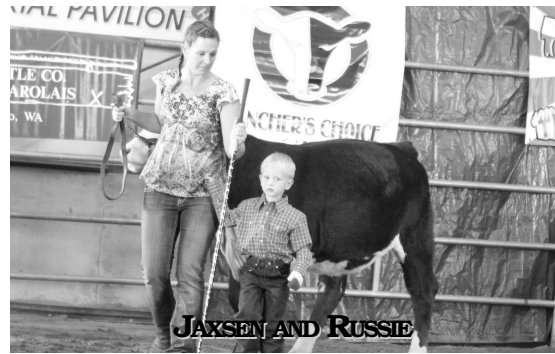
Calved 2-11-2014 Bull 43480967 Tattoo B4032

PHR MARK BUSHMAN 4  
BB SUPREMACY 1001 ET  
43187073 BB MS MARK 5100

CHURCHILL NEON 626S  
BB 626S MISS NEON 1041  
43198569 BB MS 1065 DOMINO 4077

COURT BUSHMAN 17R  
HH MISS MARK A1  
SR BIG ARTHUR H201  
BB MS M CLASSIC 8150  
GH NEON 17N  
CHURCHILL LADY 346  
BB 7Z STD LAD 4033  
BB MS4209 MRK DON 0330

Act BW	CED	BW	WW	YW	M	M&G	CEM
<b>87</b>	<b>-1.4</b>	<b>4.6</b>	<b>51</b>	<b>78</b>	<b>20</b>	<b>45</b>	<b>0.4</b>
SC	FAT	RI	IMF	BMI	CEZ	BII	CHB
<b>0.5</b>	<b>0.004</b>	<b>0.35</b>	<b>-0.06</b>	<b>\$13</b>	<b>\$12</b>	<b>\$11</b>	<b>\$21</b>



### 37 BB SUPREMACY 4014

Calved 1-17-2014 Bull 43472247 Tattoo B4014

PHR MARK BUSHMAN 4  
BB SUPREMACY 1001 ET  
43187073 BB MS MARK 5100

CX 4011 ADVANCE 0802  
BB MS 802 ADVANCE 0163  
43171620 BB MS 1065 DOM 8163

COURT BUSHMAN 17R  
HH MISS MARK A1  
SR BIG ARTHUR H201  
BB MS M CLASSIC 8150  
C 212 DOMINO 4011 ET  
CX MISS 233 ADVANCE 0530  
BB 9131 DOMINO 1065  
BB MS 6149 CLASSIC 1204

Act BW	CED	BW	WW	YW	M	M&G	CEM
<b>84</b>	<b>0.6</b>	<b>3.9</b>	<b>39</b>	<b>57</b>	<b>20</b>	<b>40</b>	<b>-0.1</b>
SC	FAT	RI	IMF	BMI	CEZ	BII	CHB
<b>0.6</b>	<b>0.011</b>	<b>0.14</b>	<b>0.02</b>	<b>\$14</b>	<b>\$15</b>	<b>\$14</b>	<b>\$15</b>

### 38 BB 1001 SUPREMACY 4025

Calved 2-6-2014 Bull 43480960 Tattoo B4025

PHR MARK BUSHMAN 4  
BB SUPREMACY 1001 ET  
43187073 BB MS MARK 5100

OT HARLAND 945  
BB MS 945 HARLAND 10 62  
43198605 BB MS MARK DON 9041

COURT BUSHMAN 17R  
HH MISS MARK A1  
SR BIG ARTHUR H201  
BB MS M CLASSIC 8150  
CJH HARLAND 408  
OT MISS L1 DOM 405  
BB MARK DONALD 3007  
BB MS 32F SANDMAN 0028

Act BW	CED	BW	WW	YW	M	M&G	CEM
<b>89</b>	<b>-0.7</b>	<b>5.1</b>	<b>45</b>	<b>70</b>	<b>20</b>	<b>42</b>	<b>-0.1</b>
SC	FAT	RI	IMF	BMI	CEZ	BII	CHB
<b>0.6</b>	<b>0.015</b>	<b>0.24</b>	<b>-0.14</b>	<b>\$12</b>	<b>\$13</b>	<b>\$11</b>	<b>\$15</b>

**Lot 39-41** Three real honest heifer bulls by 1050. 1050 in my opinion is the best heifer bull in the country, they are born little and grow fast and I think they are the soundest of all the 3027 bulls. They have better hind legs and shape.

### 39 BB 1050 ADVANCE 4009

Calved 1-10-2014 Bull 43472246 Tattoo B4009

UPS DOMINO 3027  
CX 3027 ADVANCE 1050  
43242410 MCR HLD MARK 883ET

CHURCHILL NEON 626S  
BB MS 626 NEON 1141  
43259958 BB MS MARK DON 6161

CL 1 DOMINO 9126J 1ET  
UPS MISS DIAMOND 1353  
CJH HARLAND 408  
MCR MARK DOMINET 4125  
GH NEON 17NBB  
CHURCHILL LADY 346  
BB MARK DONALD 3007  
BB MS 8009 WASH 2058

Act BW	CED	BW	WW	YW	M	M&G	CEM
<b>73</b>	<b>3.7</b>	<b>2.7</b>	<b>54</b>	<b>92</b>	<b>29</b>	<b>56</b>	<b>3.4</b>
SC	FAT	RI	IMF	BMI	CEZ	BII	CHB
<b>0.9</b>	<b>-0.006</b>	<b>0.46</b>	<b>0.13</b>	<b>\$19</b>	<b>\$18</b>	<b>\$14</b>	<b>\$29</b>

### 40 BB 1050 ADVANCE 4018

Calved 1-20-2014 Bull 43472253 Tattoo B4018

UPS DOMINO 3027  
CX 3027 ADVANCE 1050  
43242410 MCR HRLD MARK883ET

CHURCHILL NEON 626S  
BB MS 626 NEON 2002  
43273712 BB MS 285M DOMINO 6063

CL 1 DOMINO 9126J 1ET  
UPS MISS DIAMOND 1353  
CJH HARLAND 408  
MCR MARK DOMINET 4125  
GH NEON 17N  
CHURCHILL LADY 346  
CL 1 DOMINO 285M  
BB MS 1026SANDMAN 4095

Act BW	CED	BW	WW	YW	M	M&G	CEM
<b>78</b>	<b>3.4</b>	<b>3.2</b>	<b>57</b>	<b>97</b>	<b>28</b>	<b>56</b>	<b>3.3</b>
SC	FAT	RI	IMF	BMI	CEZ	BII	CHB
<b>0.9</b>	<b>-0.010</b>	<b>0.56</b>	<b>0.10</b>	<b>\$19</b>	<b>\$17</b>	<b>\$14</b>	<b>\$30</b>



# 41 BB 1050 ADVANCE 4017

Calved 1-19-2014 Bull 43472252 Tattoo B4017

UPS DOMINO 3027  
CX 3027 ADVANCE 1050  
43242410 MCR HRLDS MARK 883ET

CHURCHILL NEON 626S  
BB MS 626 NEON 1140  
43259957 BB MS 285M DOM 6099

CL 1 DOMINO 9126J 1ET  
UPS MISS DIAMOND 1353  
CJH HARLAND 408  
MCR MARK DOMINET 4125  
GH NEON 17N  
CHURCHILL LADY 346  
CL 1 DOMINO 285M  
BB MS BONANZA 4093

Act BW	CED	BW	WW	YW	M	M&G	CEM
<b>78</b>	<b>3.6</b>	<b>3.0</b>	<b>56</b>	<b>95</b>	<b>29</b>	<b>57</b>	<b>3.3</b>
SC	FAT	RI	IMF	BMI	CEZ	BII	CHB
<b>0.9</b>	<b>-0.007</b>	<b>0.46</b>	<b>0.12</b>	<b>\$19</b>	<b>\$17</b>	<b>\$14</b>	<b>\$30</b>

# 42 BB 1003 MARK CLASS 4007

Calved 1-8-2014 Bull 43472159 Tattoo B4007

NX MARK CLASS 4411  
BB 4411 MARK CLASS 1003 ET  
43218057 BB MS ADV 6001 1ET

CHURCHILL NEON 626S  
BB MS 626 NEON 0025  
43128140 BB MS LANDMARK 2156

BBH MARK DOMINO 918  
NX MS CLASSIC 9011  
HH ADVANCE 185A  
BB MS MARK DOM 0253  
GH NEON 17N  
CHURCHILL LADY 346  
BP LANDMARK 126H  
BB MS WASH 8007

Act BW	CED	BW	WW	YW	M	M&G	CEM
<b>82</b>	<b>0.2</b>	<b>3.5</b>	<b>35</b>	<b>62</b>	<b>22</b>	<b>40</b>	<b>0.5</b>
SC	FAT	RI	IMF	BMI	CEZ	BII	CHB
<b>0.4</b>	<b>-0.026</b>	<b>0.21</b>	<b>0.00</b>	<b>\$12</b>	<b>\$14</b>	<b>\$11</b>	<b>\$17</b>

Lot 43-52 are 10 bull calves all by Exclusive 1026, born between November 3 and December 3 that are the fanciest set of winter calves, along with the 3 1026 bulls we started the sale with, that we ever had. They give you low birth weight, actual weights between 68 pounds and 75 pounds, they give you WW all average over 55 WW EPD and YW over 95, milk is between 25 and 30 and their carcass data averages the highest of any bulls we have. This is a wonderful set of calves, I hope you will appreciate how good they are. Exclusive 1026 puts it all together, he will be one of the all time great bulls for uniform EPD's across the board on a bunch of cows to give low birth, high WW, YW, milk and uniform good carcass EPD's. Be sure to look them over.

# 43 BB EXCLUSIVE 3162

Calved 11-3-2013 Bull 43450816 Tattoo B3162

UPS DOMINO 3027  
BB EXCLUSIVE 1026  
43216267 BB MS 013 SANDMAN 4231

CHURCHILL YANKEE ET  
BB MS YANKEE 9016  
43121833 BB MS 9131 DOMINO 3005

CL 1 DOMINO 9126J 1ET  
UPS MISS DIAMOND 1353  
TL 32F SANDMAN 013  
BB MS 7Z S LAD 8125  
GH NEON 17N  
CHURCHILL LADY 202  
CL 1 DOMINO 9131J  
BBMS124HHOMEBLDR0269

Act BW	CED	BW	WW	YW	M	M&G	CEM
<b>73</b>	<b>3.5</b>	<b>3.2</b>	<b>56</b>	<b>87</b>	<b>25</b>	<b>53</b>	<b>3.4</b>
SC	FAT	RI	IMF	BMI	CEZ	BII	CHB
<b>0.7</b>	<b>0.051</b>	<b>0.30</b>	<b>0.53</b>	<b>\$21</b>	<b>\$18</b>	<b>\$16</b>	<b>\$34</b>

# 44 BB EXCLUSIVE 3164

Calved 11-8-2013 Bull 43450818 Tattoo B3164

UPS DOMINO 3027  
BB EXCLUSIVE 1026  
43216267 BB MS 013 SANDMAN 4231

MH MONUMENT 3147  
BB MS 3147 MONUMENT 6085 ET  
42719936 BB MS M CLASSIC 8150

CL 1 DOMINO 9126J 1ET  
UPS MISS DIAMOND 1353  
TL 32F SANDMAN 013  
BB MS 7Z S LAD 8125  
MH DAKOTA 0230  
MH MISS PATRIOT 971  
NX MARK CLASS 4411  
BB MS DOM 3001 1ET

Act BW	CED	BW	WW	YW	M	M&G	CEM
<b>73</b>	<b>2.6</b>	<b>3.0</b>	<b>54</b>	<b>82</b>	<b>27</b>	<b>54</b>	<b>-0.4</b>
SC	FAT	RI	IMF	BMI	CEZ	BII	CHB
<b>0.6</b>	<b>0.049</b>	<b>0.39</b>	<b>0.32</b>	<b>\$17</b>	<b>\$15</b>	<b>\$13</b>	<b>\$28</b>



# 45 BB EXCLUSIVE 3177

Calved 12-3-2013 Bull 43450946 Tattoo B3177

UPS DOMINO 3027  
BB EXCLUSIVE 1026  
43216267 BB MS 013 SANDMAN 4231

BB 7Z STD LAD 4033  
BB MS 4033 LAD 5139  
42601094 BB MS MARK DON 0039

CL 1 DOMINO 9126J 1ET  
UPS MISS DIAMOND 1353  
TL 32F SANDMAN 013  
BB MS 7Z S LAD 8125  
COMMANDER STD LAD 7Z  
BB MS L1 DOMINO 9490  
BB MARK DONALD 4209  
BB MS ADV 6001 1ET

Act BW	CED	BW	WW	YW	M	M&G	CEM
<b>69</b>	<b>2.9</b>	<b>2.8</b>	<b>49</b>	<b>76</b>	<b>23</b>	<b>47</b>	<b>3.3</b>
SC	FAT	RI	IMF	BMI	CEZ	BII	CHB
<b>0.9</b>	<b>0.013</b>	<b>0.31</b>	<b>0.28</b>	<b>\$22</b>	<b>\$18</b>	<b>\$18</b>	<b>\$27</b>

# 46 BB EXCLUSIVE 3173

Calved 11-21-2013 Bull 43450937 Tattoo B3173

UPS DOMINO 3027  
BB EXCLUSIVE 1026  
43216267 BB MS 013 SANDMAN 4231

BB MARK DONALD 3007  
BB MS 3007 MARK DON 5119  
42601073 BB MS MARK DON 0090

CL 1 DOMINO 9126J 1ET  
UPS MISS DIAMOND 1353  
TL 32F SANDMAN 013  
BB MS 7Z S LAD 8125  
BB MARK DONALD 386  
BB MS M CLASSIC 8150  
BB MARK DONALD 4209  
BB MS ADV 6002 1ET

Act BW	CED	BW	WW	YW	M	M&G	CEM
<b>75</b>	<b>2.7</b>	<b>3.0</b>	<b>55</b>	<b>83</b>	<b>27</b>	<b>55</b>	<b>2.1</b>
SC	FAT	RI	IMF	BMI	CEZ	BII	CHB
<b>0.9</b>	<b>0.012</b>	<b>0.41</b>	<b>0.31</b>	<b>\$21</b>	<b>\$17</b>	<b>\$17</b>	<b>\$31</b>

# 47 BB EXCLUSIVE 3172

Calved 11-20-2013 Bull 43450933 Tattoo B3172

UPS DOMINO 3027  
BB EXCLUSIVE 1026  
43216267 BB MS 013 SANDMAN 4231

CHURCHILL NEON 626S  
BB MS 626S NEON 8009  
43116862 BB MS 4033 LAD 4022

CL 1 DOMINO 9126J 1ET  
UPS MISS DIAMOND 1353  
TL 32F SANDMAN 013  
BB MS 7Z S LAD 8125  
GH NEON 17N  
CHURCHILL LADY 346  
BB 7Z STD LAD 4033  
BB MS32F SANDMAN 0004

Act BW	CED	BW	WW	YW	M	M&G	CEM
<b>74</b>	<b>3.3</b>	<b>2.8</b>	<b>57</b>	<b>91</b>	<b>25</b>	<b>54</b>	<b>3.9</b>
SC	FAT	RI	IMF	BMI	CEZ	BII	CHB
<b>0.7</b>	<b>0.017</b>	<b>0.65</b>	<b>0.27</b>	<b>\$20</b>	<b>\$18</b>	<b>\$15</b>	<b>\$32</b>

# 48 BB EXCLUSIVE 3165

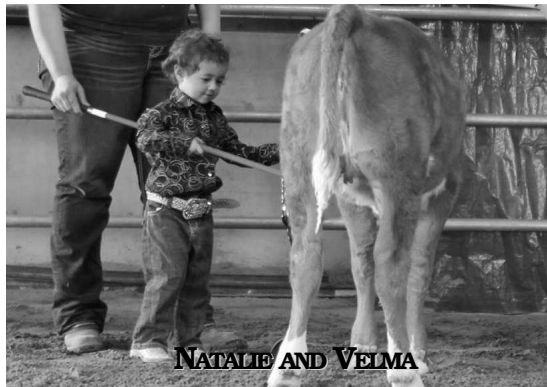
Calved 11-9-2013 Bull 43450819 Tattoo B3165

UPS DOMINO 3027  
BB EXCLUSIVE 1026  
43216267 BB MS 013 SANDMAN 4231

BB 1065 DOMINO 5105  
BB MS 5105 DOMINO 0058  
43128223 BB MS 32F SANDMAN 9081

CL 1 DOMINO 9126J 1ET  
UPS MISS DIAMOND 1353  
TL 32F SANDMAN 013  
BB MS 7Z S LAD 8125  
BB 9131 DOMINO 1065  
BB MS 6149 CLASSIC 1204  
BP 146D SANDMAN 32F  
BB MS L1 DOM 0219

Act BW	CED	BW	WW	YW	M	M&G	CEM
<b>75</b>	<b>2.6</b>	<b>4.0</b>	<b>53</b>	<b>90</b>	<b>23</b>	<b>50</b>	<b>2.8</b>
SC	FAT	RI	IMF	BMI	CEZ	BII	CHB
<b>0.8</b>	<b>-0.009</b>	<b>0.45</b>	<b>0.29</b>	<b>\$21</b>	<b>\$17</b>	<b>\$17</b>	<b>\$32</b>



NATALIE AND VELMA

## 49 BB EXCLUSIVE 3176

Calved 11-26-2013 Bull 43450945 Tattoo B3176

UPS DOMINO 3027  
BB EXCLUSIVE 1026  
43216267 BB MS 013 SANDMAN 4231

BB 1083 DOMINO 5097  
BB MS 5097 DOMINO 8018  
43116868 BB MS SANDMAN 5249

CL 1 DOMINO 9126J 1 ET  
UPS MISS DIAMOND 1353  
TL 32F SANDMAN 013  
BB MS 7Z S LAD 8125  
BB 9131 DOMINO 1083  
BB MS 6149 CLASSIC 2219  
BB 32F SANDMAN 0257  
BB MS 4033 LAD 7236

Act BW	CED	BW	WW	YW	M	M&G	CEM
<b>75</b>	<b>2.9</b>	<b>3.9</b>	<b>54</b>	<b>88</b>	<b>27</b>	<b>54</b>	<b>2.5</b>
SC	FAT	RI	IMF	BMI	CEZ	BII	CHB
<b>0.9</b>	<b>-0.015</b>	<b>0.54</b>	<b>0.20</b>	<b>\$21</b>	<b>\$17</b>	<b>\$16</b>	<b>\$31</b>

## 50 BB EXCLUSIVE 3163

Calved 11-5-2013 Bull 43450817 Tattoo B3163

UPS DOMINO 3027  
BB EXCLUSIVE 1026  
43216267 BB MS 013 SANDMAN 4231

BB MARK DONALD 3007  
BB MS 3007 MARK DONA LD 6089  
42718157 BB MS 124H HOME BLDR 2114

CL 1 DOMINO 9126J 1 ET  
UPS MISS DIAMOND 1353  
TL 32F SANDMAN 013  
BB MS 7Z S LAD 8125  
BB MARK DONALD 386  
BB MS M CLASSIC 8150  
BP HOME BUILDER 124H  
BB MS MARK DON 9096

Act BW	CED	BW	WW	YW	M	M&G	CEM
<b>71</b>	<b>3.0</b>	<b>3.0</b>	<b>44</b>	<b>76</b>	<b>28</b>	<b>50</b>	<b>2.4</b>
SC	FAT	RI	IMF	BMI	CEZ	BII	CHB
<b>0.8</b>	<b>-0.020</b>	<b>0.44</b>	<b>0.21</b>	<b>\$19</b>	<b>\$17</b>	<b>\$16</b>	<b>\$27</b>

## 51 BB EXCLUSIVE 3174

Calved 11-24-2013 Bull 43450939 Tattoo B3174

UPS DOMINO 3027  
BB EXCLUSIVE 1026  
43216267 BB MS 013 SANDMAN 4231

BB 9131 DOMINO 1065  
BB MS 1065 DOMINO 5148  
42601129 BB MS 8009 WASH 1099

CL 1 DOMINO 9126J 1 ET  
UPS MISS DIAMOND 1353  
TL 32F SANDMAN 013  
BB MS 7Z S LAD 8125  
CL 1 DOMINO 9131J  
BB MS SANDMAN 9149  
BB WASHINGTON 8009  
BB MS 9013Y ADV 9136

Act BW	CED	BW	WW	YW	M	M&G	CEM
<b>68</b>	<b>3.5</b>	<b>3.4</b>	<b>50</b>	<b>77</b>	<b>24</b>	<b>49</b>	<b>3.0</b>
SC	FAT	RI	IMF	BMI	CEZ	BII	CHB
<b>0.7</b>	<b>0.034</b>	<b>0.33</b>	<b>0.38</b>	<b>\$21</b>	<b>\$18</b>	<b>\$17</b>	<b>\$29</b>

## 52 BB EXCLUSIVE 3168

Calved 11-15-2013 Bull 43450823 Tattoo B3168

UPS DOMINO 3027  
BB EXCLUSIVE 1026  
43216267 BB MS 013 SANDMAN 4231

BB MARK DONALD 3007  
BB MS 3007 MARK DON 8020  
43116870 BB MS 8009 WASH 1133

CL 1 DOMINO 9126J 1 ET  
UPS MISS DIAMOND 1353  
TL 32F SANDMAN 013  
BB MS 7Z S LAD 8125  
BB MARK DONALD 386  
BB MS M CLASSIC 8150  
BB WASHINGTON 8009  
BB MS SANDMAN 9084

Act BW	CED	BW	WW	YW	M	M&G	CEM
<b>72</b>	<b>3.1</b>	<b>3.1</b>	<b>46</b>	<b>71</b>	<b>30</b>	<b>53</b>	<b>2.4</b>
SC	FAT	RI	IMF	BMI	CEZ	BII	CHB
<b>0.7</b>	<b>-0.008</b>	<b>0.47</b>	<b>0.10</b>	<b>\$17</b>	<b>\$17</b>	<b>\$14</b>	<b>\$24</b>



BB MARK DONALD 3007

**Lot 53-56** These are 4 December calves. These fancy calves just barely older than the January calves do not over look them. There are 2 3007 calves that are nice and a 1026 and 1015. They all are low birth weight between 71 and 74 pounds. I think this set of winter calves are the best we have ever sold from the 4 we start the sale with to the last one.

## 53 BB 3007 MARK DONALD 3180

Calved 12-9-2013 Bull 43450949 Tattoo B3180

BB MARK DONALD 386  
BB MARK DONALD 3007  
42364214 BB MS M CLASSIC 8150

BB 9131 DOMINO 1065  
BB MS 1065 DOMINO 7049  
43021943 BB MS M DONALD 3121

BB MARK DONALD 549  
LADY SELKIRK J770  
NX MARK CLASS 4411  
BB MS DOM 3001 1ET  
CL 1 DOMINO 9131J  
BB MS SANDMAN 9149  
GVR MARK DON 933  
BB MS 5036 DOM 8176

Act BW	CED	BW	WW	YW	M	M&G	CEM
<b>72</b>	<b>0.4</b>	<b>3.6</b>	<b>49</b>	<b>79</b>	<b>27</b>	<b>51</b>	<b>0.0</b>
SC	FAT	RI	IMF	BMI	CEZ	BII	CHB
<b>0.7</b>	<b>-0.028</b>	<b>0.40</b>	<b>0.11</b>	<b>\$16</b>	<b>\$14</b>	<b>\$14</b>	<b>\$26</b>

## 54 BB 3007 MARK DONALD 3181

Calved 12-10-2013 Bull 43450950 Tattoo B3181

BB MARK DONALD 386  
BB MARK DONALD 3007  
42364214 BB MS M CLASSIC 8150

CHURCHILL NEON 626S  
BB MS 626S NEON 9028  
43117057 BB MS 0257 SANDMAN 6167

BB MARK DONALD 549  
LADY SELKIRK J770  
NX MARK CLASS 4411  
BB MS DOM 3001 1ET  
GH NEON 17N  
CHURCHILL LADY 346  
BB 32F SANDMAN 0257  
BB MS HARD DRIV E 2095

Act BW	CED	BW	WW	YW	M	M&G	CEM
<b>74</b>	<b>0.0</b>	<b>3.8</b>	<b>54</b>	<b>86</b>	<b>31</b>	<b>58</b>	<b>0.5</b>
SC	FAT	RI	IMF	BMI	CEZ	BII	CHB
<b>0.6</b>	<b>-0.019</b>	<b>0.64</b>	<b>-0.02</b>	<b>\$13</b>	<b>\$13</b>	<b>\$10</b>	<b>\$26</b>

## 55 BB EXCLUSIVE 3184

Calved 12-16-2013 Bull 43450953 Tattoo B3184

UPS DOMINO 3027  
BB EXCLUSIVE 1026  
43216267 BB MS 013 SANDMAN 4231

TL 32F SANDMAN 013  
BB MS 013 SANDMAN 2268  
42410542 BB MS L1 DOM 4223

CL 1 DOMINO 9126J 1 ET  
UPS MISS DIAMOND 1353  
TL 32F SANDMAN 013  
BB MS 7Z S LAD 8125  
BP 146D SANDMAN 32F  
CFR ELIZABETH 449  
BB L1 DOM 1020  
BB MS MARK ADV 2160

Act BW	CED	BW	WW	YW	M	M&G	CEM
<b>73</b>	<b>2.5</b>	<b>3.9</b>	<b>50</b>	<b>90</b>	<b>22</b>	<b>47</b>	<b>2.5</b>
SC	FAT	RI	IMF	BMI	CEZ	BII	CHB
<b>1.0</b>	<b>0.038</b>	<b>0.32</b>	<b>0.30</b>	<b>\$21</b>	<b>\$17</b>	<b>\$18</b>	<b>\$28</b>

## 56 BB 1015 HARLAND 3183

Calved 12-12-2013 Bull 43450952 Tattoo B3183

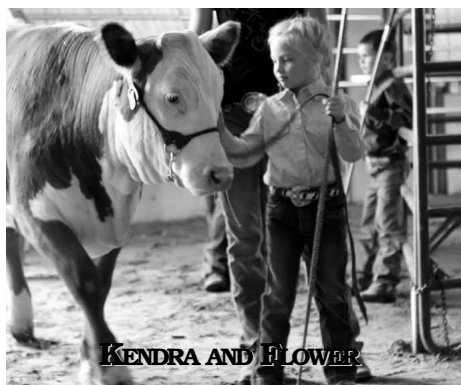
CJH HARLAND 408  
BB HARLAND 1015  
43189197 BB MS 626S NEON 9020B

CHURCHILL NEON 626S  
BB MS 626 NEON 1038  
43198566 BB MS 2009 LAD 5230

HH ADVANCE 9005J  
CJH L1 DOMINETTE 0064  
CHURCHILL NEON 626S  
BB MS 285M DOM 6102  
GH NEON 17N  
CHURCHILL LADY 346  
BB 4033 LAD 2009  
BB MS LANDMARK 1143

Act BW	CED	BW	WW	YW	M	M&G	CEM
<b>71</b>	<b>2.3</b>	<b>3.2</b>	<b>51</b>	<b>107</b>	<b>28</b>	<b>53</b>	<b>3.3</b>
SC	FAT	RI	IMF	BMI	CEZ	BII	CHB
<b>0.9</b>	<b>-0.057</b>	<b>0.87</b>	<b>0.00</b>	<b>\$18</b>	<b>\$16</b>	<b>\$13</b>	<b>\$31</b>

**Lot 57-63** are all 1026's out of a very good group of 3 year old heifers. These 7 calves are younger out of our young pen but are very even big square topped bull calves. 1026 is very even in BW, WW, YW and carcass numbers. We don't have these calves ultrasound-ed yet but we have done several on 1026 some are really high on marbling. The birth weight on these bull calves is right around 80 pounds which makes them just perfect to go on and grow, have low BW and real high YW.



## 57 BB EXCLUSIVE 4094

Calved 3-24-2014 Bull 43494594 Tattoo B4094

UPS DOMINO 3027  
BB EXCLUSIVE 1026  
43216267 BB MS 013 SANDMAN 4231

CHURCHILL NEON 626S  
BB MS 626 NEON 1067  
43189618 BB MS 0257 SANDMAN 3173

CL 1 DOMINO 9126J 1ET  
UPS MISS DIAMOND 1353  
TL 32F SANDMAN 013  
BB MS 7Z S LAD 8125  
GH NEON 17N  
CHURCHILL LADY 346  
BB 32F SANDMAN 0257  
BB MS 6330 STAND 9123

Act BW	CED	BW	WW	YW	M	M&G	CEM
<b>84</b>	<b>2.3</b>	<b>4.2</b>	<b>62</b>	<b>108</b>	<b>28</b>	<b>59</b>	<b>3.2</b>
SC	FAT	RI	IMF	BMI	CEZ	BII	CHB
<b>0.8</b>	<b>0.002</b>	<b>0.72</b>	<b>0.27</b>	<b>\$19</b>	<b>\$16</b>	<b>\$13</b>	<b>\$36</b>

## 58 BB EXCLUSIVE 4060

Calved 3-7-2014 Bull 43494555 Tattoo B4060

UPS DOMINO 3027  
BB EXCLUSIVE 1026  
43216267 BB MS 013 SANDMAN 4231

CHURCHILL NEON 626S  
BB MS 626 NEON 1055  
43189589 BB MS 0135 MARK DON 3305

CL 1 DOMINO 9126J 1ET  
UPS MISS DIAMOND 1353  
TL 32F SANDMAN 013  
BB MS 7Z S LAD 8125  
GH NEON 17N  
CHURCHILL LADY 346  
BB 4209 MARK DON 0135  
BB MS STAN LAD 4112

Act BW	CED	BW	WW	YW	M	M&G	CEM
<b>79</b>	<b>2.1</b>	<b>3.7</b>	<b>54</b>	<b>95</b>	<b>25</b>	<b>52</b>	<b>2.9</b>
SC	FAT	RI	IMF	BMI	CEZ	BII	CHB
<b>0.7</b>	<b>-0.003</b>	<b>0.63</b>	<b>0.23</b>	<b>\$19</b>	<b>\$16</b>	<b>\$14</b>	<b>\$32</b>

## 59 BB EXCLUSIVE 4059

Calved 3-20-2014 Bull 43494553 Tattoo B4059

UPS DOMINO 3027  
BB EXCLUSIVE 1026  
43216267 BB MS 013 SANDMAN 4231

BP LANDMARK 126H  
BB MS LANDMARK 2156  
42290713 BB MS WASH 8007

CL 1 DOMINO 9126J 1ET  
UPS MISS DIAMOND 1353  
TL 32F SANDMAN 013  
BB MS 7Z S LAD 8125  
96 LANDMARK 50A  
BP LADY MASTER 293C  
BB WASHINGTON 2041  
BB MS STAN LAD 1080

Act BW	CED	BW	WW	YW	M	M&G	CEM
<b>81</b>	<b>2.1</b>	<b>3.3</b>	<b>45</b>	<b>72</b>	<b>25</b>	<b>47</b>	<b>1.9</b>
SC	FAT	RI	IMF	BMI	CEZ	BII	CHB
<b>0.8</b>	<b>0.020</b>	<b>0.24</b>	<b>0.19</b>	<b>\$18</b>	<b>\$16</b>	<b>\$16</b>	<b>\$23</b>

## 60 BB EXCLUSIVE 4039

Calved 2-16-2014 Bull 43480973 Tattoo B4039

UPS DOMINO 3027  
BB EXCLUSIVE 1026  
43216267 BB MS 013 SANDMAN 4231

CHURCHILL NEON 626S  
BB MS 626 NEON 1096  
43208562 BB MS MONUMENT 6067

CL 1 DOMINO 9126J 1ET  
UPS MISS DIAMOND 1353  
TL 32F SANDMAN 013  
BB MS 7Z S LAD 8125  
GH NEON 17N  
CHUCHILL LADY 346  
MH MONUMNET 3147  
BB MS9015 SANDMAN2262

Act BW	CED	BW	WW	YW	M	M&G	CEM
<b>71</b>	<b>4.0</b>	<b>1.2</b>	<b>48</b>	<b>88</b>	<b>25</b>	<b>48</b>	<b>2.9</b>
SC	FAT	RI	IMF	BMI	CEZ	BII	CHB
<b>0.6</b>	<b>0.013</b>	<b>0.62</b>	<b>0.32</b>	<b>\$19</b>	<b>\$18</b>	<b>\$14</b>	<b>\$30</b>

## 61 BB EXCLUSIVE 4077

Calved 3-15-2014 Bull 43494576 Tattoo B4077

UPS DOMINO 3027  
BB EXCLUSIVE 1026  
43216267 BB MS 013 SANDMAN 4231

CHURCHILL YANKEE ET  
BB MS YANKEE 1017  
43193481 BB MS MONUMENT 6038

CL 1 DOMINO 9126J 1ET  
UPS MISS DIAMOND 1353  
TL 32F SANDMAN 013  
BB MS 7Z S LAD 8125  
GH NEON 17N  
CHURCHILL LADY 202  
MH MONUMENT 3147  
BB MS 124H HB 0296

Act BW	CED	BW	WW	YW	M	M&G	CEM
<b>81</b>	<b>2.3</b>	<b>3.9</b>	<b>59</b>	<b>98</b>	<b>25</b>	<b>55</b>	<b>2.3</b>
SC	FAT	RI	IMF	BMI	CEZ	BII	CHB
<b>0.6</b>	<b>0.016</b>	<b>0.45</b>	<b>0.4</b>	<b>\$19</b>	<b>\$16</b>	<b>\$14</b>	<b>\$35</b>

## 62 BB EXCLUSIVE 4078

Calved 3-16-2014 Bull 43494577 Tattoo B4078

UPS DOMINO 3027  
BB EXCLUSIVE 1026  
43216267 BB MS 013 SANDMAN 4231

CX ADVANCE 112  
BB MS 112 ADVANCE 9129  
43140137 BB MS 4033 LAD 9026

CL 1 DOMINO 9126J 1ET  
UPS MISS DIAMOND 1353  
TL 32F SANDMAN 013  
BB MS 7Z S LAD 8125  
H5 500 ADVANCE 897  
CX MS MARK DOM 548  
BB 7Z STD LAD 4033  
BB MS L1 DOM 9459

Act BW	CED	BW	WW	YW	M	M&G	CEM
<b>80</b>	<b>3.1</b>	<b>2.7</b>	<b>52</b>	<b>78</b>	<b>25</b>	<b>54</b>	<b>2.8</b>
SC	FAT	RI	IMF	BMI	CEZ	BII	CHB
<b>0.9</b>	<b>0.033</b>	<b>0.41</b>	<b>0.27</b>	<b>\$20</b>	<b>\$18</b>	<b>\$17</b>	<b>\$28</b>

## 63 BB EXCLUSIVE 4051

Calved 2-27-2014 Bull 43480984 Tattoo B4051

UPS DOMINO 3027  
BB EXCLUSIVE 1026  
43216267 BB MS 013 SANDMAN 4231

CHURCHILL YANKEE ET  
BB MS YANKEE 1022  
43198524 BB MISS SELKIRK 5079

CL 1 DOMINO 9126J 1ET  
UPS MISS DIAMOND 1353  
TL 32F SANDMAN 013  
BB MS 7Z S LAD 8125  
GH NEON 17N  
CHURCHILL LADY 202  
DHR L1 SELKIRK  
BB MS 6149 CLASSIC 3215

Act BW	CED	BW	WW	YW	M	M&G	CEM
<b>80</b>	<b>3.2</b>	<b>3.2</b>	<b>50</b>	<b>82</b>	<b>22</b>	<b>47</b>	<b>3.7</b>
SC	FAT	RI	IMF	BMI	CEZ	BII	CHB
<b>0.6</b>	<b>0.001</b>	<b>0.44</b>	<b>0.37</b>	<b>\$21</b>	<b>\$18</b>	<b>\$16</b>	<b>\$32</b>

## 64 BB 994 DOMINO 4048

Calved 2-26-2014 Bull 43480981 Tattoo B4048

CL 1 DOMINO 637S 1ET  
CL 1 DOMINO 994W 1ET  
42982456 CL1 DOMINETTE440P 1ET

BJ L1 DOMINO 2637  
BB MS BJ DOMINO 9036  
43117073 BB MS 3007 M DON 7050

L1 DOMINO 03414  
CL 1 DOMINETTE 118L  
CL1 DOMINO 9126J 1ET  
CL 1 DOMINETTE 974J  
XP L1 DOMINO 01050  
BJ L1 DOM 2069  
BB MARK DON 3007  
BB MS 4209MDON 2122

Act BW	CED	BW	WW	YW	M	M&G	CEM
<b>90</b>	<b>-0.9</b>	<b>4.5</b>	<b>49</b>	<b>81</b>	<b>25</b>	<b>50</b>	<b>-2.7</b>
SC	FAT	RI	IMF	BMI	CEZ	BII	CHB
<b>1.1</b>	<b>0.007</b>	<b>0.34</b>	<b>0.07</b>	<b>\$17</b>	<b>\$12</b>	<b>\$17</b>	<b>\$23</b>

11

B4048 a really thick muscular 994 calf out of a very good BJ 2637 cow. A good carcass calf.



**Lot 65-68** This set of 4 calves should be super heifer bulls. They should sire calves in the 60's and 70's. They themselves had actual weights of 72, 77, 74 and 68 pounds. They are out of very good first calf heifers. Their sire has consistently sired between 60 and 75 pound calves we hardly watch the heifers that are bred to 1050.

## 65 BB 1050 ADVANCE 4043

Calved 2-19-2014 Bull 43480977 Tattoo B4043

UPS DOMINO 3027  
CX 3027 ADVANCE 1050  
43242410 MCR HRLDS MARK 883ET

OT HARLAND 945  
BB MS 945 HARLAND 1135  
43259951 BB MS 5132 M DON 9092

CL 1 DOMINO 9126J 1ET  
UPS MISS DIAMOND 1353  
CJH HARLAND 408  
MCR MARK DOM 4125  
CJH HARLD 408  
OT MISS L1 DOM 405  
BB 3007 M DON 5132  
BB MS 2000 M DON 2040

Act BW	CED	BW	WW	YW	M	M&G	CEM
<b>72</b>	<b>4.4</b>	<b>1.8</b>	<b>51</b>	<b>77</b>	<b>27</b>	<b>53</b>	<b>3.5</b>
SC	FAT	RI	IMF	BMI	CEZ	BII	CHB
<b>1.0</b>	<b>0.011</b>	<b>0.39</b>	<b>0.08</b>	<b>\$20</b>	<b>\$19</b>	<b>\$17</b>	<b>\$25</b>

## 66 BB 1050 ADVANCE 4045

Calved 2-22-2014 Bull 43480979 Tattoo B4045

UPS DOMINO 3027  
CX 3027 ADVANCE 1050  
43242410 MCR HLDS MARK 883ET

CHURCHILL NEON 626S  
BB MS 626 NEON 1133  
43259948 BB MS 767G ADVANCE 6076

CL 1 DOMINO 9126J 1ET  
UPS MISS DIAMOND 1353  
CJH HARLAND 408  
MCR MARK DOM 4125  
GH NEON 17N  
CHURCHILL LADY 346  
HH ADVANCE 767G 1ET  
BB MS 1065 DOM 4097

Act BW	CED	BW	WW	YW	M	M&G	CEM
<b>77</b>	<b>4.8</b>	<b>2.3</b>	<b>54</b>	<b>91</b>	<b>31</b>	<b>58</b>	<b>2.8</b>
SC	FAT	RI	IMF	BMI	CEZ	BII	CHB
<b>0.9</b>	<b>-0.003</b>	<b>0.54</b>	<b>0.12</b>	<b>\$19</b>	<b>\$19</b>	<b>\$14</b>	<b>\$29</b>

## 67 BB 1050 ADVANCE 4024

Calved 2-4-2014 Bull 43480959 Tattoo B4024

UPS DOMINO 3027  
CX 3027 ADVANCE 1050  
43242410 MCR HRLD MARK 883ET

CHURCHILL NEON 626S  
BB MS 626 NEON 1138  
43259955 BB MS 1065 DOMINO 7044

CL 1 DOMINO 9126J 1ET  
UPS MISS DIAMOND 1353  
CJH HARLAND 408  
MCR MARK DOM 4125  
GH NEON 17N  
CHURCHILL LADY 346  
BB 9131 DOMINO 1065  
BB MS CRCH PATROL 1073

Act BW	CED	BW	WW	YW	M	M&G	CEM
<b>74</b>	<b>4.1</b>	<b>2.7</b>	<b>55</b>	<b>93</b>	<b>28</b>	<b>55</b>	<b>3.7</b>
SC	FAT	RI	IMF	BMI	CEZ	BII	CHB
<b>0.8</b>	<b>-0.003</b>	<b>0.51</b>	<b>0.13</b>	<b>\$19</b>	<b>\$18</b>	<b>\$13</b>	<b>\$30</b>

## 68 BB 1050 ADVANCE 4054

Calved 3-2-2014 Bull 43494546 Tattoo B4054

UPS DOMINO 3027  
CX 3027 ADVANCE 1050  
43242410 MCR HRLD MARK 883 ET

BB 7Z STD LAD 4033  
BB MS 4033 STD LAD 2020  
43273772 BB MS 9131 DOM 7195

CL 1 DOMINO 9126J 1ET  
UPS MISS DIAMOND 1353  
CJH HARLAND 408  
MCR MARK DOM 4125  
COMMANDER STD LAD 7Z  
BB MS L1 DOMINO 9490  
CL 1 DOMINO 9131J  
BB MS LANDMARK 2022

Act BW	CED	BW	WW	YW	M	M&G	CEM
<b>68</b>	<b>5.2</b>	<b>1.6</b>	<b>51</b>	<b>74</b>	<b>27</b>	<b>52</b>	<b>3.6</b>
SC	FAT	RI	IMF	BMI	CEZ	BII	CHB
<b>1.0</b>	<b>0.011</b>	<b>0.19</b>	<b>0.08</b>	<b>\$20</b>	<b>\$20</b>	<b>\$16</b>	<b>\$24</b>

## 69 BB 159 DOMINO 4082

Calved 3-18-2014 Bull 43494581 Tattoo B4082

CL 1 DOMINO 993W  
CL 1 DOMINO 159Y 1ET  
43216160 CL I DOMINETTE 6159S

BJ L1 DOMINO 3007 ET  
BB MS 2007 BJ DOMINO 0019  
43128130 BB MS 4033 LAD 1216

CL 1 DOMINO 637S 1ET  
CL 1 DOMINETTE 5142R  
HH ADVANCE 3113N 1ET  
CL 1 DOM 4200P 1ET  
XP L DOMINO 01050  
CL 1 DOM 8184H  
BB 7Z STD LAD 4033  
BB MS L1 DOM 5274

Act BW	CED	BW	WW	YW	M	M&G	CEM
<b>80</b>	<b>0.8</b>	<b>3.5</b>	<b>50</b>	<b>73</b>	<b>26</b>	<b>51</b>	<b>0.6</b>
SC	FAT	RI	IMF	BMI	CEZ	BII	CHB
<b>0.9</b>	<b>0.015</b>	<b>0.09</b>	<b>0.03</b>	<b>\$16</b>	<b>\$15</b>	<b>\$14</b>	<b>\$20</b>

**Lot 69-72** These 4 bull calves are some of the best in the sale they are among the youngest, but they are big thick heavy boned calves that will grow on and grow and stand up well. There could be herd sire among them.

## 70 BB 159 DOMINO 4106

Calved 4-2-2014 Bull 43502164 Tattoo B4106

CL 1 DOMINO 993W  
CL 1 DOMINO 159Y 1ET  
43216160 CL I DOMINETTE 6159S

CL 1 DOMINO 9131J  
BB MS 9131 DOMINO 7020  
42786135 BB MS 4209 M DON 3065

CL 1 DOMINO 637S 1ET  
CL 1 DOMINETTE 5142R  
HH ADVANCE 3113N 1ET  
CL 1 DOM 4200P 1ET  
CL 1 DOMINO 5131E  
CL 1 DOM 4148  
BB MARK DONALD 4209  
BB MS WASH 6028

Act BW	CED	BW	WW	YW	M	M&G	CEM
<b>84</b>	<b>1.6</b>	<b>3.4</b>	<b>48</b>	<b>78</b>	<b>30</b>	<b>54</b>	<b>0.6</b>
SC	FAT	RI	IMF	BMI	CEZ	BII	CHB
<b>0.8</b>	<b>0.026</b>	<b>0.18</b>	<b>-0.03</b>	<b>\$13</b>	<b>\$15</b>	<b>\$11</b>	<b>\$19</b>

## 71 BB 159 DOMINO 4088

Calved 3-21-2014 Bull 43494587 Tattoo B4088

CL 1 DOMINO 993W  
CL 1 DOMINO 159Y 1ET  
43216160 CL I DOMINETTE 6159S

BB 285M DOMINO 6065  
BB MS 6065 DOMINO 8063  
43116970 BB M S4036 CLASS 6098

CL 1 DOMINO 637S 1ET  
CL 1 DOMINETTE 5142R  
HH ADVANCE 3113N 1ET  
CL 1 DOM 4200P 1ET  
CL 1 DOMINO 285M  
BB MS 897 ADV 4034  
BB 3022 CALSSIC 4036  
BB MS 9131 DOM 4007

Act BW	CED	BW	WW	YW	M	M&G	CEM
<b>82</b>	<b>1.5</b>	<b>3.4</b>	<b>46</b>	<b>68</b>	<b>34</b>	<b>56</b>	<b>0.7</b>
SC	FAT	RI	IMF	BMI	CEZ	BII	CHB
<b>0.8</b>	<b>0.022</b>	<b>0.18</b>	<b>0.09</b>	<b>\$14</b>	<b>\$15</b>	<b>\$12</b>	<b>\$20</b>

## 72 BB 159 DOMINO 4079

Calved 3-16-2014 Bull 43494578 Tattoo B4079

CL 1 DOMINO 993W  
CL 1 DOMINO 159Y 1ET  
43216160 CL I DOMINETTE 6159S

BB 9131 DOMINO 1065  
BB MS 1065 DOMINO 8149  
43116933 BB MS 124H HM 3067

CL 1 DOMINO 637S 1ET  
CL 1 DOMINETTE 5142R  
HH ADVANCE 3113N 1ET  
CL 1 DOM 4200P 1ET  
CL 1 DOMINO 9131J  
BB MS SANDMAN 9149  
BP HOME BLDR 124H  
BB MS SELKIRK 4083

Act BW	CED	BW	WW	YW	M	M&G	CEM
<b>85</b>	<b>0.0</b>	<b>5.2</b>	<b>56</b>	<b>85</b>	<b>32</b>	<b>61</b>	<b>0.8</b>
SC	FAT	RI	IMF	BMI	CEZ	BII	CHB
<b>0.6</b>	<b>0.016</b>	<b>0.23</b>	<b>-0.03</b>	<b>\$11</b>	<b>\$12</b>	<b>\$7</b>	<b>\$23</b>

## 73 BB 1001 SUPREMACY 4027

Calved 2-8-2014 Bull 43480962 Tattoo B4027

PHR MARK BUSHMAN 4  
BB SUPREMACY 1001 ET  
43187073 BB MS MARK 5100

CHURCHILL NEON 626S  
BB MS 626 NEON 1070  
43208535 BB MS MARK DON 2170

COURT BUSHMAN 17R  
HH MISS MARK A1  
SR BIG ARTHUR H201  
BB MS M CLASSIC 8150  
GH NEON 17N  
CHURCHILL LADY 346  
BB MARK DONALD 4209  
BB MS RED STAN 6041

Act BW	CED	BW	WW	YW	M	M&G	CEM
<b>85</b>	<b>-1.7</b>	<b>4.6</b>	<b>43</b>	<b>74</b>	<b>18</b>	<b>39</b>	<b>0.1</b>
SC	FAT	RI	IMF	BMI	CEZ	BII	CHB
<b>0.5</b>	<b>-0.005</b>	<b>0.34</b>	<b>-0.06</b>	<b>\$12</b>	<b>\$12</b>	<b>\$11</b>	<b>\$18</b>

This last calf in the calf part of the sale is a stout big dark colored calf out of the Bushman 4 son. These cattle were great carcass and growth cattle starting in the 60's and have gone on and grown in the next century with the best of them. His grandmother 2170 was the best 4209 cow we ever had.



## 74 BB 239 SAGA 3081

Calved 3-28-2013 Bull 43390213 Tattoo B3081

CJH HARLAND 408  
SR SAGA 239W  
43017219 SR ROSA 323

CHURCHILL NEON7127T ET  
BB MS 7127 NEON 0027  
43128154 BB MS MARK DON 2170

HH ADVANCE 9005J  
CJH L1 DOM 00613  
CTY BONANZA 01K  
SR SABRINA 991  
GH NEON 17N  
CHURCHILL LADY 303  
BB MARK DONALD 4209  
BB MS RED STAN 6041

Act BW	CED	BW	WW	YW	M	M&G	CEM
<b>80</b>	<b>0.6</b>	<b>3.7</b>	<b>50</b>	<b>81</b>	<b>22</b>	<b>47</b>	<b>2.4</b>
SC	FAT	RI	IMF	BMI	CEZ	BII	CHB
<b>0.8</b>	<b>-0.016</b>	<b>0.52</b>	<b>-0.07</b>	<b>\$17</b>	<b>\$15</b>	<b>\$14</b>	<b>\$22</b>

B3081 is a real herd bull prospect big red eyes around both eyes, super marked red right down to his feet great medium color, an attractive good moving bull. He is extremely long bodied and thick topped, super bone. He is without doubt one of the best two year old bulls we have ever offered. His dam is a daughter of 2170B the best 4209 daughter we ever had. His sire we bought out of Stuber's sale and he was one of the top carcass bull in his sale. He has done a super job of breeding for us.

## 75 BB 994 DOMINO 3071

Calved 3-24-2013 Bull 43390078 Tattoo B3071

CL 1 DOMINO 637S 1ET  
CL 1 DOMINO 994W 1ET  
42982456 CL 1 DOMINETTE440P 1ET

BB 9131 DOMINO 1065  
BB MS 1065 DOMINO 6122  
42719619 BB MS 4033 LAD 0162

L1 DOMINO 03400  
CL 1 DOMINETTE 118L  
CL 1 DOMINO 9126J 1ET  
CL 1 DOMINETTE 974J  
CL 1 DOMINO 9131J  
BB MS SANDMAN 9149  
BB 7Z STD LAD 4033  
BB MS 9410 DOM 3340

Act BW	CED	BW	WW	YW	M	M&G	CEM
<b>92</b>	<b>-0.2</b>	<b>5.5</b>	<b>57</b>	<b>95</b>	<b>25</b>	<b>53</b>	<b>-1.2</b>
SC	FAT	RI	IMF	BMI	CEZ	BII	CHB
<b>0.8</b>	<b>0.012</b>	<b>0.37</b>	<b>0.09</b>	<b>\$15</b>	<b>\$12</b>	<b>\$12</b>	<b>\$27</b>

This 994W son was one of the best calves in 2013. He was a favorite of all of us from a baby. He is an extremely thick butted bull, super bone and long bodied. He is a darn good 994W bull out of a great 1065 daughter that is one of the best in the herd.

## 76 BB 0130X DOMINO 3061

Calved 3-21-2013 Bull 43400816 Tattoo B3061

CL 1 DOMINO 860U  
CL1 DOMINO 0130X 1ET  
43082390 CL 1 DOM 440P 1ET

CHURCHILL YANKEE ET  
BB MS YANKEE 9110  
43121842 BB MS 4033 LAD 1136

CL DOMINO 637S 1 ET  
CL 1 DOMINETTE 5142R  
CL 1 DOMINO 9126J 1ET  
CL 1 DOMINETTE 974J  
GH NEON 17N  
CHURCHILL LADY 202  
BB 7Z STD LAD 4033  
BB MS LIBERTY 7250

Act BW	CED	BW	WW	YW	M	M&G	CEM
<b>76</b>	<b>2.2</b>	<b>1.9</b>	<b>56</b>	<b>87</b>	<b>25</b>	<b>53</b>	<b>1.8</b>
SC	FAT	RI	IMF	BMI	CEZ	BII	CHB
<b>0.8</b>	<b>0.013</b>	<b>0.3</b>	<b>0.29</b>	<b>\$20</b>	<b>\$16</b>	<b>\$16</b>	<b>\$31</b>

This son of 0130X is a thick heavy boned meaty bull. He is moderate in frame. He has low birth weight EPD and high yearling weight EPD. He is out of a real fancy Yankee cow. With all the good cows in his pedigree he should sire great cows. The mother of 0130X is one if not the best herd cow of the breed; she is the mother of many thousands of dollars of Herd bulls.

Lot 77 amd 78 have the elite Mark Donald pedigree 1087, H201 and 4411 they are the great ones. The dam of these two bulls is an outstanding H201 daughter. Here is a chance to get two attractive brothers. This is a chance to get a Mark Donald herd sire.

## 77 BB 1087 DOMINO 3024

Calved 3-3-2013 Bull 43390019 Tattoo B3024

BB DOMINO 427  
BB DOMINO 1087  
18133299 BB MISS S LAD 6B107

SR BIG ARTHUR H201  
BB MS MARK 5100  
42605011 BB MS M CLASSIC 8150

BB DOMINO 146  
BB MISS MRK BUSH 175  
BB SELKIRK LAD 3B08  
BB MISS DONALD 489  
MARK ARTHUR 775  
MS MARK DOMINO 767  
NX MARK CLASS 4411  
BB MS DOM 3001 1ET

Act BW	CED	BW	WW	YW	M	M&G	CEM
<b>89</b>	<b>-2.8</b>	<b>4.8</b>	<b>43</b>	<b>71</b>	<b>12</b>	<b>34</b>	<b>-3.0</b>
SC	FAT	RI	IMF	BMI	CEZ	BII	CHB
<b>1.0</b>	<b>0.006</b>	<b>0.28</b>	<b>-0.07</b>	<b>\$17</b>	<b>\$11</b>	<b>\$18</b>	<b>\$16</b>

## 78 BB 1087 DOMINO 3025

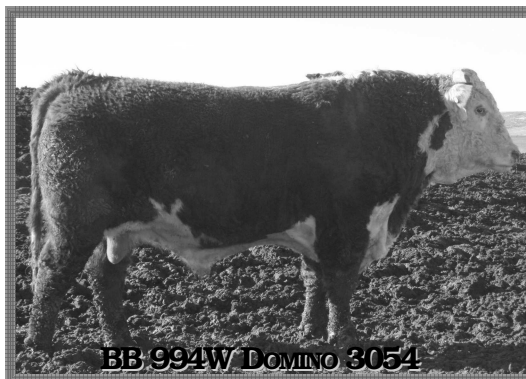
Calved 3-4-2013 Bull 43390020 Tattoo B3025

BB DOMINO 427  
BB DOMINO 1087  
18133299 BB MISS S LAD 6B107

SR BIG ARTHUR H201  
BB MS MARK 5100  
42605011 BB MS M CLASSIC 8150

BB DOMINO 146  
BB MISS MRK BUSH 175  
BB SELKIRK LAD 3B08  
BB MISS DONALD 489  
MARK ARTHUR 775  
MS MARK DOMINO 767  
NX MARK CLASS 4411  
BB MS DOM 3001 1ET

Act BW	CED	BW	WW	YW	M	M&G	CEM
<b>87</b>	<b>-2.8</b>	<b>4.6</b>	<b>39</b>	<b>65</b>	<b>12</b>	<b>32</b>	<b>-3.0</b>
SC	FAT	RI	IMF	BMI	CEZ	BII	CHB
<b>1.0</b>	<b>0.005</b>	<b>0.16</b>	<b>-0.05</b>	<b>\$17</b>	<b>\$12</b>	<b>\$19</b>	<b>\$14</b>



## 79 BB 994W DOMINO 3054

Calved 3-19-2013 Bull 43390056 Tattoo B3054

CL 1 DOMINO 637S 1ET  
CL 1 DOMINO 994W 1ET  
42982456 CL 1 DOM440P 1ET

BB MARK DONALD 3007  
BB MS 3007 DOMINO 7021  
42854841 BB MS 9131 DOM 2127

L1 DOMINO 03399  
CL 1 DOMINETTE 118L  
CL 1 DOMINO 9126J 1ET  
CL 1 DOMINETTE 974J  
BB MARK DONALD 386  
BB MS M CLASSIC 8150  
CL 1 DOMINO 9131J  
BB MS32F SNDMN 0028

Act BW	CED	BW	WW	YW	M	M&G	CEM
<b>82</b>	<b>1.2</b>	<b>4.0</b>	<b>45</b>	<b>83</b>	<b>26</b>	<b>48</b>	<b>-1.7</b>
SC	FAT	RI	IMF	BMI	CEZ	BII	CHB
<b>0.9</b>	<b>-0.007</b>	<b>0.34</b>	<b>0.0</b>	<b>\$15</b>	<b>\$14</b>	<b>\$13</b>	<b>\$21</b>

Heads up on this next pen of bulls they are big stout attractive coming two year old bulls. 3054 is a son of 994W, he is a big, long bodied, heavy boned bull. Remember 994W's mother, 440P, is the all time great cow, great udder and lots of milk.

# 80 BB 7134 DOMINO 3099

Calved 4-16-2013 Bull 43402170 Tattoo B3099

HH ADVANCE 3113N 1ET L1 DOMINO 99498  
 CL1 DOMINO 7134T HH MS ADV 875H 1ET  
 42788279 CL 1 DOMINETTE 291M CL 1 DOMINO 9126J 1E T  
 CL 1 DOM 8128H 1ET  
 BJ L1 DOMINO 2637 XP L1 DOMINO 01050  
 BB MS BJ DOMINO 9038 BJ L1 DOM 2069  
 43117079 BB MS 1065 DOMINO 7043 BB 9131 DOMINO 1065  
 BB MS 6149 CLASS 3163

Act BW	CED	BW	WW	YW	M	M&G	CEM
<b>80</b>	<b>1.6</b>	<b>3.3</b>	<b>50</b>	<b>72</b>	<b>22</b>	<b>47</b>	<b>1.0</b>
SC	FAT	RI	IMF	BMI	CEZ	BII	CHB
<b>0.8</b>	<b>0.0</b>	<b>0.29</b>	<b>0.13</b>	<b>\$19</b>	<b>\$16</b>	<b>\$16</b>	<b>\$25</b>

An excellent calf out of another big Cooper bull we used a little, he is thick and well balanced.

# 81 BB 1050 ADVANCE 3027

Calved 3-5-2013 Bull 43390022 Tattoo B3027

UPS DOMINO 3027 CL 1 DOMINO 9126J 1ET  
 CX 3027 ADVANCE 1050 UPS MISS DIAMOND 1353  
 43242410 MCR HRLD MARK 883ET CJH HARLAND 408  
 MCR MARK DOM 4125  
 CHURCHILL NEON 626S GH NEON 17N  
 BB MS 626 NEON 1070 CHURCHILL LADY 346  
 43208535 BB MS 4209 M DON 2170 BB MARK DONALD 4209  
 BB MS RED STAN 6041

Act BW	CED	BW	WW	YW	M	M&G	CEM
<b>80</b>	<b>2.6</b>	<b>3.7</b>	<b>55</b>	<b>99</b>	<b>27</b>	<b>55</b>	<b>3.1</b>
SC	FAT	RI	IMF	BMI	CEZ	BII	CHB
<b>0.8</b>	<b>-0.028</b>	<b>0.7</b>	<b>0.04</b>	<b>\$18</b>	<b>\$16</b>	<b>\$13</b>	<b>\$30</b>

B3027 is a 1050 son out of a great cow. He should be a heifer bull.



# 82 BB 1010 LAD 3010

Calved 2-8-2013 Bull 43391890 Tattoo B3010

BB SELKIRK LAD 3B08 SELKIRK LAD H3  
 BB 3B08 LAD 1010 PW DOMINETTE 9  
 43179567 BB MS3007 MARK DON 8089 BB MARK DONALD 3007  
 BB MS 9131 DOM 3005  
 SR SAGA 429W CJH HARLAND 408  
 BB MS 429 SAGA 1026 SR SABRINA 983  
 43198534 BB MS 1083 DOMINO 9002 BB 9131 DOMINO 1083  
 BB MS MONUMENT 6007

Act BW	CED	BW	WW	YW	M	M&G	CEM
<b>88</b>	<b>-0.1</b>	<b>5.4</b>	<b>53</b>	<b>90</b>	<b>26</b>	<b>53</b>	<b>-0.8</b>
SC	FAT	RI	IMF	BMI	CEZ	BII	CHB
<b>0.7</b>	<b>0.017</b>	<b>0.27</b>	<b>0.07</b>	<b>\$13</b>	<b>\$12</b>	<b>\$11</b>	<b>\$24</b>

# 83 BB 3027 DOMINO 3019

Calved 2-28-2013 Bull 43403470 Tattoo B3019

CL 1 DOMINO 9126J 1E T HH ADVANCE 767G 1ET  
 UPS DOMINO 3027 CL 1 DOMINETTE 490  
 42426386 UPS MISS DIAMOND 1353 SH DIAMOND 881  
 UPS MS MILEHIGH 8330  
 BB 9131 DOMINO 1065 CL 1 DOMINO 9131J  
 BB MS 1065 DOMINO 5049 BB MS 32F SANDMAN9149  
 42575848 BB MS RC DOMINO 2017 RCH DOMINO 9005  
 BB MS 4209 M DON 9314

Act BW	CED	BW	WW	YW	M	M&G	CEM
<b>80</b>	<b>6.8</b>	<b>2.1</b>	<b>44</b>	<b>77</b>	<b>27</b>	<b>49</b>	<b>4.8</b>
SC	FAT	RI	IMF	BMI	CEZ	BII	CHB
<b>0.8</b>	<b>-0.029</b>	<b>0.24</b>	<b>0.16</b>	<b>\$20</b>	<b>\$22</b>	<b>\$16</b>	<b>\$26</b>

B3019 is a 3027son, he will be a super range bull that should be a heifer bull but for sure would be great to breed your 2 year old heifers for their second calf.

# 84 BB 1050 ADVANCE 3022

Calved 3-1-2013 Bull 43390013 Tattoo B3022

UPS DOMINO 3027 CL 1 DOMINO 9126J 1ET  
 CX 3027 ADVANCE 1050 UPS MISS DIAMOND 1353  
 43242410 MCR HLDS MARK 883 ET CJH HARLAND 408  
 MCR MARK DOM 4125SR  
 SAGA 429W CJH HARLAND 408  
 BB MS 429 SAGA 1027 SR SABRINA 983  
 43198536 BB MS 626S NEON 9034 CHURCHILL NEON 626S  
 BB MS 1065 DOMINO 6078

Act BW	CED	BW	WW	YW	M	M&G	CEM
<b>68</b>	<b>6.3</b>	<b>0.3</b>	<b>49</b>	<b>82</b>	<b>29</b>	<b>54</b>	<b>4.4</b>
SC	FAT	RI	IMF	BMI	CEZ	BII	CHB
<b>1.0</b>	<b>0.025</b>	<b>0.42</b>	<b>0.13</b>	<b>\$21</b>	<b>\$21</b>	<b>\$16</b>	<b>\$26</b>

This is for sure a real heifer bull. He has a CED of 6.9 and 0.3 BW EPD. This is a great solid built bull that will get what you want done as a heifer bull, no sleepless nights with him.

# 85 BB PINSTRIPE 3084

Calved 4-1-2013 Bull 43401839 Tattoo B3084

CHURCHILL YANKEE ET GH NEON 17N  
 CHURCHILL PINSTRIPE 9124W ET CHURCHILL LADY 202  
 42992946 CHURCHILL LADY 404 CL 1 DOMINO 9126J 1ET  
 CHURCHILL LADY 1192  
 BJ L1 DOMINO 2637 XP L1 DOMINO 01050  
 BB MS BJ DOMINO 9036 BJ L1 DOM 2069  
 43117073 BB MS 3007 M DON 7050 BB MARK DONALD 3007  
 BB MS4209M DON 2122

Act BW	CED	BW	WW	YW	M	M&G	CEM
<b>79</b>	<b>0.7</b>	<b>2.8</b>	<b>48</b>	<b>79</b>	<b>23</b>	<b>47</b>	<b>1.0</b>
SC	FAT	RI	IMF	BMI	CEZ	BII	CHB
<b>0.7</b>	<b>0.001</b>	<b>0.32</b>	<b>0.19</b>	<b>\$17</b>	<b>\$15</b>	<b>\$15</b>	<b>\$25</b>

B3084 is a real good Pinstripe bull, these Pinstripe bulls are extra long, good moving bulls. This bull is out of a great cow.

# 86 BB 1108Y DOMINO 3020

Calved 3-1-2013 Bull 43390647 Tattoo B3020

CL 1 DOMINO 9105W CL 1 DOMINO 732T  
 CL1 DOMINO 1108Y 1ET CL 1 DOM 591R 1 ET  
 43189548 CL 1 DOMINETTE 617S HH ADVANCE 3113N 1ET  
 CL 1 DOMINETTE 4180P  
 BB MARK DONALD 3007 BB MARK DONALD 386  
 BB MS 3007 MARK DONALD 6238 BB MS M CLASS 8150  
 42762523 BB MS CHURCHPATROL0220 CHURCHILLPATROL630  
 BB MS HI VOLT 4127

Act BW	CED	BW	WW	YW	M	M&G	CEM
<b>84</b>	<b>-0.2</b>	<b>3.2</b>	<b>47</b>	<b>64</b>	<b>35</b>	<b>59</b>	<b>0.9</b>
SC	FAT	RI	IMF	BMI	CEZ	BII	CHB
<b>0.5</b>	<b>0.027</b>	<b>0.3</b>	<b>-0.08</b>	<b>\$9</b>	<b>\$13</b>	<b>\$7</b>	<b>\$16</b>

We had 2 bulls born about the same time out of Cooper 1108Y and out of Mark Donald cows, they were favorites from the day they were born, B3013 and B3020, both red eyed, thick and attractive. We kept 3013 for ourselves and we are going to let somebody get this super bull. The other 2 bulls in this pen are super range bulls by Pinstripe.

# 87 BB PINSTRIPE 3059

Calved 3-20-2013 Bull 43390069 Tattoo B3059

CHURCHILL YANKEE ET GH NEON 17N  
 CHURCHILL PINSTRIPE 9124W ET CHURCHILL LADY 202  
 42992946 CHURCHILL LADY 404 CL 1 DOMINO 9126J 1ET  
 CHURCHILL LADY 1192  
 BB MARK DONALD 3007 BB MARK DONALD 386  
 BB MS 3007 MARK DONALD 6161 BB MS M CLASS 8150  
 42719652 BB MS 8009 WASH 2058 BB WASH 8009  
 BB MS 4209MDON 0133

Act BW	CED	BW	WW	YW	M	M&G	CEM
<b>78</b>	<b>1.6</b>	<b>2.5</b>	<b>45</b>	<b>76</b>	<b>24</b>	<b>46</b>	<b>1.7</b>
SC	FAT	RI	IMF	BMI	CEZ	BII	CHB
<b>0.6</b>	<b>-0.006</b>	<b>0.22</b>	<b>0.18</b>	<b>\$16</b>	<b>\$15</b>	<b>\$14</b>	<b>\$24</b>



# 88 BB PINSTRIPE 3042

Calved 3-15-2013 Bull 43390040 Tattoo B3042

CHURCHILL YANKEE ET  
CHURCHILL PINSTRIPE 9124W ET  
42992946 CHURCHILL LADY 404

GH NEON 17N  
CHURCHILL LADY 202  
CL 1 DOMINO 9126J 1ET  
CHURCHILL LADY 1192  
CL 1 DOMINO 5131E  
CL 1 DOMINETTE 4148  
BB 4209 MARK DOM 0135  
BB MS KERNEL 2007

CL 1 DOMINO 9131J  
BB 9131 DOMINO 6032  
42684228 BB MS 0135 MARK DOM 3320

Act BW	CED	BW	WW	YW	M	M&G	CEM
<b>94</b>	<b>0.5</b>	<b>5.6</b>	<b>55</b>	<b>104</b>	<b>25</b>	<b>53</b>	<b>0.4</b>
SC	FAT	RI	IMF	BMI	CEZ	BII	CHB
<b>0.7</b>	<b>-0.003</b>	<b>0.21</b>	<b>0.22</b>	<b>\$15</b>	<b>\$13</b>	<b>\$11</b>	<b>\$30</b>

# 89 BB 3027 DOMINO 3102

Calved 4-19-2013 Bull 43402173 Tattoo B3102

CL 1 DOMINO 9126J 1ET  
UPS DOMINO 3027  
42426386 UPS MISS DIAMOND 1353

HH ADVANCE 767G 1ET  
CL 1 DOMINETTE 490  
SH DIAMOND 881  
UPS MS MILEHIGH 8330  
COMMANDER STD LAD7Z  
BB MS L1 DOMINO 9490  
BP 146D SANDMAN 32F  
BB MS 9410 DOM 2052

BB 7Z STD LAD 4033  
BB MS 4033 LAD 5065  
42601021 BB MS 32F SANDMAN 0033

Act BW	CED	BW	WW	YW	M	M&G	CEM
<b>80</b>	<b>6.0</b>	<b>2.1</b>	<b>45</b>	<b>73</b>	<b>27</b>	<b>50</b>	<b>5.0</b>
SC	FAT	RI	IMF	BMI	CEZ	BII	CHB
<b>0.8</b>	<b>-0.016</b>	<b>0.32</b>	<b>0.04</b>	<b>\$19</b>	<b>\$21</b>	<b>\$15</b>	<b>\$23</b>

Heads up, a big pen of bulls that are super stout kind of bulls. B3102 is a herd bull prospect out of the mother of our B1059 herd sire that will have some really good bulls in this pen. 3102 is by the great AI sire 3027 that has revolutionized the Hereford breed as a heifer bull, low birth and good growth. This calf is a herd bull prospect.

# 90 BB 159 DOMINO 3139

Calved 5-14-2013 Bull 43412400 Tattoo B3139

CL 1 DOMINO 993W  
CL 1 DOMINO 159Y 1ET  
43216160 CL 1 DOMINETTE 6159S

CL 1 DOMINO 637S 1ET  
CL 1 DOMINETTE 5142R  
HH ADVANCE 3113N 1ET  
CL 1 DOM 4200P 1ET  
GH NEON 17N  
CHURCHILL LADY 202  
BB MARK CLASSIC 6149  
BB MS 124H H B 0013

CHURCHILL YANKEE ET  
BB MS YANKEE 9012  
43094314 BB MS 6149 CLASSIC 3163

Act BW	CED	BW	WW	YW	M	M&G	CEM
<b>75</b>	<b>1.6</b>	<b>2.8</b>	<b>52</b>	<b>78</b>	<b>30</b>	<b>56</b>	<b>2.4</b>
SC	FAT	RI	IMF	BMI	CEZ	BII	CHB
<b>0.6</b>	<b>0.007</b>	<b>0.34</b>	<b>0.1</b>	<b>\$15</b>	<b>\$15</b>	<b>\$11</b>	<b>\$25</b>

B3139 is a super real young bull sired by the bull that Jay and Cameron Mulrony bought out of Coopers 2012 sale. They thought they got the best bull and he is a great breeding bull. This calf is out of a super Yankee cow. Here is a herd bull prospect

# 91 BB ADVANTAGE 3113

Calved 5-5-2013 Bull 43412096 Tattoo B3113

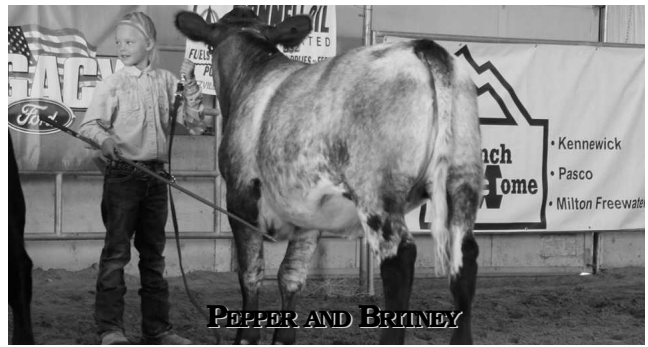
CHURCHILL NEON 626S  
BB 626 ADVANTAGE 1059  
43198754 BB MS 4033 LAD 5065

GH NEON 17N  
CHURCHILL LADY 346  
BB 7Z STD LAD 4033  
BB MS SANDMAN 0033  
CL 1 DOMINO 5131E  
CL 1 DOMINETTE 4148  
BJ L1 DOMINO 9502  
BB MS4209MDON 1079

CL 1 DOMINO 9131J  
BB MS 9131 DOMINO 5159  
42601159 BB MS BJ DOMINO 3107

Act BW	CED	BW	WW	YW	M	M&G	CEM
<b>80</b>	<b>0.4</b>	<b>4.6</b>	<b>54</b>	<b>92</b>	<b>23</b>	<b>50</b>	<b>1.6</b>
SC	FAT	RI	IMF	BMI	CEZ	BII	CHB
<b>0.6</b>	<b>-0.022</b>	<b>0.49</b>	<b>-0.07</b>	<b>\$14</b>	<b>\$14</b>	<b>\$10</b>	<b>\$25</b>

B3113 is a really outstanding young bull sired by B1059. B1059 was in our Champion pen of three at Reno in 2011. We kept him to use out of those three bulls and he has turned out to be a good breeding bull. This sure could be a top herd bull.



**Lot 92-104** I'm not going to write a foot note for all of these bulls but as you look them over there is just no difference, they are a uniform set of young bulls sired by B1059, B1018, B1026, B1015, 239W, 3027 and 1050. They are a great set of bulls.

# 92 BB ADVANTAGE 3147

Calved 5-27-2013 Bull 43412406 Tattoo B3147

CHURCHILL NEON 626S  
BB 626 ADVANTAGE 1059  
43198754 BB MS 4033 LAD 5065

GH NEON 17N  
CHURCHILL LADY 346  
BB 7Z STD LAD 4033  
BB MS SANDMAN 0033  
XP L1 DOMINO 01050  
BJ L1 DOMINETTE 2069  
BB 32F SANDMAN 0257  
BB MS MARK DON 9043

BJ L1 DOMINO 2637  
BB MS BJ DOMINO 8029  
43142926 BB MS 0257 SANDMAN 5239

Act BW	CED	BW	WW	YW	M	M&G	CEM
<b>72</b>	<b>-0.1</b>	<b>2.8</b>	<b>52</b>	<b>84</b>	<b>23</b>	<b>49</b>	<b>1.9</b>
SC	FAT	RI	IMF	BMI	CEZ	BII	CHB
<b>0.7</b>	<b>-0.001</b>	<b>0.57</b>	<b>0.03</b>	<b>\$16</b>	<b>\$14</b>	<b>\$13</b>	<b>\$25</b>

# 93 BB 1015 HARLAND 3091

Calved 4-7-2013 Bull 43402105 Tattoo B3091

CJH HARLAND 408  
BB HARLAND 1015  
43189197 BB MS 626S NEON 9020

HH ADVANCE 9005J  
CJH L1 DOMINETTE 0064  
CHURCHILL NEON 626S  
BB MS 285M DOM 6102  
MH DAKOTA 0230  
MH MS PATROIT 971  
CL 1 DOMINO 9131J  
BB MS 4209MDON0316

MH MONUMENT 3147  
BB MS MONUMENT 1076  
43205841 BB MS 9131 DOM 3030

Act BW	CED	BW	WW	YW	M	M&G	CEM
<b>82</b>	<b>0.9</b>	<b>4.2</b>	<b>67</b>	<b>109</b>	<b>30</b>	<b>63</b>	<b>-0.8</b>
SC	FAT	RI	IMF	BMI	CEZ	BII	CHB
<b>0.8</b>	<b>0.02</b>	<b>0.54</b>	<b>0.14</b>	<b>\$15</b>	<b>\$13</b>	<b>\$10</b>	<b>\$33</b>

# 94 BB ADVANTAGE 3130

Calved 5-7-2013 Bull 43412137 Tattoo B3130

CHURCHILL NEON 626S  
BB 626 ADVANTAGE 1059  
43198754 BB MS 4033 LAD 5065

GH NEON 17N  
CHURCHILL LADY 346  
BB 7Z STD LAD 4033  
BB MS SANDMAN 0033  
CARLSONS NEW IDEA B46  
HN MS 9061 PARTROL 310  
PPF MARK DOM 8148  
BB MS 4177 LAD 7108

HN NEW IDEA B46 507  
BB MS NEW IDEA 7108  
42852202 BB MS 8148 M DON 4029

Act BW	CED	BW	WW	YW	M	M&G	CEM
<b>83</b>	<b>0.0</b>	<b>4.2</b>	<b>56</b>	<b>95</b>	<b>24</b>	<b>51</b>	<b>2.0</b>
SC	FAT	RI	IMF	BMI	CEZ	BII	CHB
<b>0.7</b>	<b>-0.011</b>	<b>0.39</b>	<b>0.11</b>	<b>\$16</b>	<b>\$14</b>	<b>\$12</b>	<b>\$29</b>

# 95 BB PINSTRIPE 3155

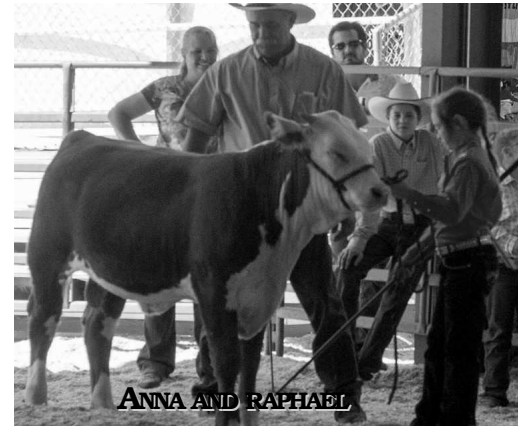
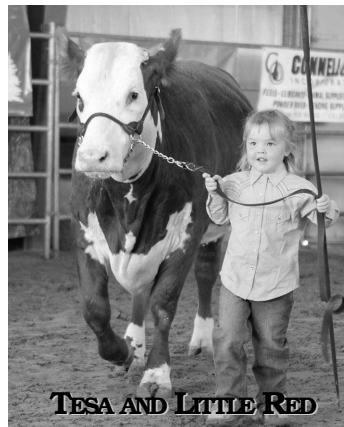
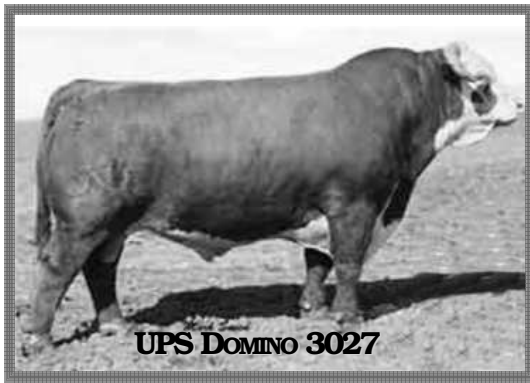
Calved 6-13-2013 Bull 43417715 Tattoo B3155

CHURCHILL YANKEE ET  
CHURCH PINSTRIPE 9124W  
42992946 CHURCHILL LADY 404

GH NEON 17N  
CHURCHILL LADY 202  
CL 1 DOMINO 9126J 1ET  
CHURCHILL LADY 1192  
BP 146D SANDMAN 32F  
BB MS LIBERTY 7096  
BB 7Z STD LAD 4033  
BB MS L1 DOM 2321

BB 32F SANDMAN 0257  
BB MS 0257 SANDMAN 5249  
42664591 BB MS 4033 LAD 7236

Act BW	CED	BW	WW	YW	M	M&G	CEM
<b>75</b>	<b>1.5</b>	<b>3.2</b>	<b>56</b>	<b>93</b>	<b>26</b>	<b>54</b>	<b>2.2</b>
SC	FAT	RI	IMF	BMI	CEZ	BII	CHB
<b>0.7</b>	<b>0.002</b>	<b>0.43</b>	<b>0.19</b>	<b>\$17</b>	<b>\$15</b>	<b>\$13</b>	<b>\$30</b>



**96 BB 1050 ADVANCE 3083**  
 Calved 4-1-2013 Bull 43401838 Tattoo B3083

**100 BB 1018 DOMINO 3111**  
 Calved 5-5-2013 Bull 43412094 Tattoo B3111

UPS DOMINO 3027  
 CX 3027 ADVANCE 1050  
 43242410 MCR HRLDS MARK 883ET

CL 1 DOMINO 9126J 1ET  
 UPS MISS DIAMOND 1353  
 CJH HARLAND 408  
 MCR MARK DOM 4125  
 GH NEON 17N  
 CURCHILL LADY 346  
 BB 32F SANDMAN 0257  
 BB MS 6330 STAN 9123

CHURCHILL NEON 626S  
 BB MS 626 NEON 1067  
 43198618 BB MS 0257 SANDMAN 3173

UPS DOMINO 3027  
 BB 3027 DOMINO 1018  
 43193486 BB MS MONUMENT 6007  
 BB MARK DONALD 3007  
 BB MS 3007 MARK DONALD 9124  
 43117118 BB MS RC DOMINO 2017

CL 1 DOMINO 9126J 1ET  
 UPS MISS DIAMOND 1353  
 MH MONUMENT 3147  
 BB MS 32F SANDMAN 0028  
 BB MARK DONALD 386  
 BB MS M CLASSIC 8150  
 RCH DOMINO 9005  
 BB MS 4209 MDON9314

Act BW	CED	BW	WW	YW	M	M&G	CEM
<b>84</b>	<b>2.9</b>	<b>4.1</b>	<b>65</b>	<b>107</b>	<b>30</b>	<b>62</b>	<b>3.3</b>
SC	FAT	RI	IMF	BMI	CEZ	BII	CHB
<b>0.9</b>	<b>-0.004</b>	<b>0.68</b>	<b>0.11</b>	<b>\$19</b>	<b>\$16</b>	<b>\$12</b>	<b>\$34</b>

Act BW	CED	BW	WW	YW	M	M&G	CEM
<b>79</b>	<b>2.6</b>	<b>3.8</b>	<b>46</b>	<b>82</b>	<b>27</b>	<b>50</b>	<b>0.9</b>
SC	FAT	RI	IMF	BMI	CEZ	BII	CHB
<b>0.7</b>	<b>-0.011</b>	<b>0.29</b>	<b>0.08</b>	<b>\$15</b>	<b>\$16</b>	<b>\$12</b>	<b>\$24</b>

**97 BB 3027 DOMINO 3100**  
 Calved 4-17-2013 Bull 43402171 Tattoo B3100

**101 BB EXCLUSIVE 3141**  
 Calved 5-17-2013 Bull 43415346 Tattoo B3141

CL 1 DOMINO 9126J 1ET  
 UPS DOMINO 3027  
 42426386 UPS MISS DIAMOND 1353

HH ADVANCE 767G 1ET  
 CL 1 DOMINETTE 490  
 SH DIAMOND 881  
 UPS MS MILEHIGH 8330  
 MH DAKOTA 0230  
 MH MS PATRIOT 971  
 BP HOME BLDR 124H  
 BB MS 7Z STAN 5039

MH MONUMENT 3147  
 BB MS MONUMENT 6038  
 42684233 BB MS 124H HB 0296

UPS DOMINO 3027  
 BB EXCLUSIVE 1026  
 43216267 BB MS 013 SANDMAN 4231  
 BB MARK DONALD 3007  
 BB MS 3007 MARK DON 0102  
 43128271 BB MS 3007 DOMINO 7045

CL 1 DOMINO 9126J 1ET  
 UPS MISS DIAMOND 1353  
 TL 32F SANDMAN 013  
 BB MS 7Z S LAD 8125  
 BB MARK DONALD 386  
 BB MS M CLASSIC 8150  
 BB MARK DONALD 3007  
 BB MS 1065 DOM 4077

Act BW	CED	BW	WW	YW	M	M&G	CEM
<b>85</b>	<b>4.7</b>	<b>2.9</b>	<b>53</b>	<b>87</b>	<b>31</b>	<b>57</b>	<b>1.4</b>
SC	FAT	RI	IMF	BMI	CEZ	BII	CHB
<b>0.7</b>	<b>0.01</b>	<b>0.31</b>	<b>0.21</b>	<b>\$17</b>	<b>\$17</b>	<b>\$12</b>	<b>\$29</b>

Act BW	CED	BW	WW	YW	M	M&G	CEM
<b>71</b>	<b>3.6</b>	<b>2.3</b>	<b>50</b>	<b>77</b>	<b>29</b>	<b>55</b>	<b>2.3</b>
SC	FAT	RI	IMF	BMI	CEZ	BII	CHB
<b>0.9</b>	<b>0.006</b>	<b>0.48</b>	<b>0.22</b>	<b>\$20</b>	<b>\$18</b>	<b>\$17</b>	<b>\$28</b>

**98 BB 1018 DOMINO 3103**  
 Calved 4-20-2013 Bull 43402174 Tattoo B3103

**102 BB 239 SAGA 3048**  
 Calved 3-17-2013 Bull 43390046 Tattoo B3048

UPS DOMINO 3027  
 BB 3027 DOMINO 1018  
 43193486 BB MS MONUMENT 6007

CL 1 DOMINO 9126J 1ET  
 UPS MISS DIAMOND 1353  
 MH MONUMENT 3147  
 BB MS 32F SANDMAN0028  
 CL 1 DOMINO 9131J  
 BB MS 32FSANDMAN0028  
 B 804 DOM 8020 301  
 BB MS HI VOLT 3018

BB 9131 DOMINO 1065  
 BB MS 1065 DOMINO 5015  
 42575779 BB MS 301 DOM 5030

CJH HARLAND 408  
 SR SAGA 239W  
 43017219 SR ROSA 323  
 CHURCHILL NEON 626S  
 BB MS 626 NEON 0004  
 43128099 BB MS 6149 CLASSIC 1204

HH ADVANCE 9005J  
 CJH L1 DOMINETTE 0068  
 CTY BONANZA 01K  
 SR SABRINA 986  
 GH NEON 17N  
 CHURCHILL LADY 346  
 BB MARK CLASSIC 6149  
 BB MS 7Z S LAD 6184

Act BW	CED	BW	WW	YW	M	M&G	CEM
<b>80</b>	<b>3.1</b>	<b>3.5</b>	<b>51</b>	<b>86</b>	<b>24</b>	<b>49</b>	<b>2.3</b>
SC	FAT	RI	IMF	BMI	CEZ	BII	CHB
<b>0.7</b>	<b>-0.005</b>	<b>0.37</b>	<b>0.12</b>	<b>\$17</b>	<b>\$17</b>	<b>\$14</b>	<b>\$27</b>

Act BW	CED	BW	WW	YW	M	M&G	CEM
<b>64</b>	<b>3.2</b>	<b>1.2</b>	<b>46</b>	<b>82</b>	<b>24</b>	<b>47</b>	<b>3.5</b>
SC	FAT	RI	IMF	BMI	CEZ	BII	CHB
<b>0.8</b>	<b>-0.019</b>	<b>0.5</b>	<b>0.05</b>	<b>\$18</b>	<b>\$18</b>	<b>\$15</b>	<b>\$25</b>

**99 BB 1018 DOMINO 3115**  
 Calved 5-5-2013 Bull 43412101 Tattoo B3115

**103 BB 1015 HARLAND 3145**  
 Calved 5-23-2013 Bull 43415347 Tattoo B3145

UPS DOMINO 3027  
 BB 3027 DOMINO 1018  
 43193486 BB MS MONUMENT 6007

CL 1 DOMINO 9126J 1ET  
 UPS MISS DIAMOND 1353  
 MH MONUMENT 3147  
 BB MS 32F SANDMAN 0028  
 BB MARK DONALD 386  
 BB MS M CLASSIC 8150  
 BP 146D SANDMAN 32F  
 BB MS L1 DOM 0219

BB MARK DONALD 3007  
 BB MS 3007 MARK DONALD 9081  
 43117210 BB MS 32F SANDMAN 9081

CJH HARLAND 408  
 BB HARLAND 1015  
 43189197 BB MS 626S NEON 9020  
 UPS DOMINO 3027  
 BB MS 3027 DOMINO 1018  
 43192144 BB MS 1065 DOMINO 6122

HH ADVANCE 9005J  
 CJH L1 DOMINETTE 0064  
 CHURCHILL NEON 626S  
 BB MS 285M DOM 6102  
 CL 1 DOMINO 9126J 1ET  
 UPS MISS DIAMOND 1353  
 BB 9131 DOMINO 1065  
 BB MS 4033 LAD 0162

Act BW	CED	BW	WW	YW	M	M&G	CEM
<b>78</b>	<b>2.1</b>	<b>4.1</b>	<b>50</b>	<b>86</b>	<b>28</b>	<b>53</b>	<b>0.8</b>
SC	FAT	RI	IMF	BMI	CEZ	BII	CHB
<b>0.6</b>	<b>-0.01</b>	<b>0.45</b>	<b>0.06</b>	<b>\$14</b>	<b>\$15</b>	<b>\$11</b>	<b>\$25</b>

Act BW	CED	BW	WW	YW	M	M&G	CEM
<b>70</b>	<b>5.5</b>	<b>1.4</b>	<b>58</b>	<b>95</b>	<b>29</b>	<b>58</b>	<b>4.4</b>
SC	FAT	RI	IMF	BMI	CEZ	BII	CHB
<b>1.0</b>	<b>0.002</b>	<b>0.53</b>	<b>0.21</b>	<b>\$22</b>	<b>\$20</b>	<b>\$16</b>	<b>\$33</b>

# 104 BB 239 SAGA 3075

Calved 3-26-2013 Bull 43390207 Tattoo B3075

CJH HARLAND 408 HH ADVANCE 9005J  
 SR SAGA 239W CJH L1 DOMINETTE 0064  
 43017219 SR ROSA 323 CTY BONANZA 01K  
 BB 5097 DOMINO 7052 SR SABRINA 989  
 BB MS 7052 DOMINO 0054 BB 1083 DOMINO 5097  
 43128211 BB MS 9131 DOM 7200 BB MS 1065 DOM 5014  
 CL 1 DOMINO 9131J  
 BB MS 6149 CLASS 3271

Act BW	CED	BW	WW	YW	M	M&G	CEM
<b>81</b>	<b>2.8</b>	<b>2.8</b>	<b>47</b>	<b>76</b>	<b>25</b>	<b>48</b>	<b>1.8</b>
SC	FAT	RI	IMF	BMI	CEZ	BII	CHB
<b>0.8</b>	<b>-0.002</b>	<b>0.26</b>	<b>0.03</b>	<b>\$17</b>	<b>\$17</b>	<b>\$14</b>	<b>\$22</b>

Lot 105-129 A super set of bulls to end the horned Hereford bulls. Start with a B1059 and ends with a 994Wand there are some B3007, 3027, B1018, 1050, 159Y and Pinstripe's. What a set of herd bulls to be the sire's of this great set of coming two year old bulls. We will just let them speak for themselves when you look at them.

# 105 BB ADVANTAGE 3112

Calved 5-5-2013 Bull 43412095 Tattoo B3112

CHURCHILL NEON 626S GH NEON 17N  
 BB 626 ADVANTAGE 1059 CHURCHILL LADY 346  
 43198754 BB MS 4033 LAD 5065 BB 7Z STD LAD 4033  
 BB 5097 DOMINO 7052 BB MS 32F SANDMAN 0033  
 BB MS 7052 DOMINO 0054 BB 1083 DOM 5097  
 43128211 BB MS 9131 DOM 7200 BB MS 1065 DOMINO 5014  
 CL 1 DOMINO 9131J  
 BB MS 6149 CLASS 3271

Act BW	CED	BW	WW	YW	M	M&G	CEM
<b>79</b>	<b>0.6</b>	<b>3.6</b>	<b>56</b>	<b>94</b>	<b>21</b>	<b>49</b>	<b>3.0</b>
SC	FAT	RI	IMF	BMI	CEZ	BII	CHB
<b>0.6</b>	<b>-0.016</b>	<b>0.6</b>	<b>0.03</b>	<b>\$16</b>	<b>\$14</b>	<b>\$12</b>	<b>\$28</b>

# 106 BB ADVANTAGE 3120

Calved 5-6-2013 Bull 43412109 Tattoo B3120

CHURCHILL NEON 626S GH NEON 17N  
 BB 626 ADVANTAGE 1059 CHURCHILL LADY 346  
 43198754 BB MS 4033 LAD 5065 BB 7Z STD LAD 4033  
 BB DOMINO 6038 BB MS 32F SANDMAN 0033  
 BB MS 6038 DOMINO 9135 BB DOMINO 1087  
 43117152 BB MS 9131 DOM 3137 BB MS 4033 LAD 9026  
 CL 1 DOMINO 9131J  
 BB MS 32F SANDMAN 1001

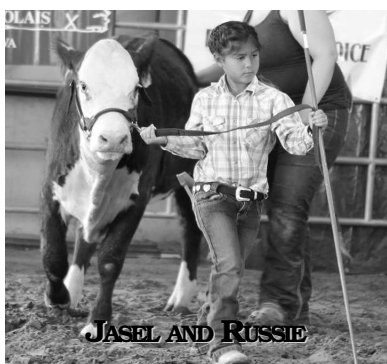
Act BW	CED	BW	WW	YW	M	M&G	CEM
<b>83</b>	<b>-1.2</b>	<b>5.7</b>	<b>54</b>	<b>91</b>	<b>20</b>	<b>47</b>	<b>0.8</b>
SC	FAT	RI	IMF	BMI	CEZ	BII	CHB
<b>0.6</b>	<b>-0.017</b>	<b>0.46</b>	<b>-0.01</b>	<b>\$14</b>	<b>\$12</b>	<b>\$11</b>	<b>\$26</b>

# 107 BB PINSTRIPE 3104

Calved 4-22-2013 Bull 43402175 Tattoo B3104

CHURCHILL YANKEE ET GH NEON 17N  
 CHURCHILL PINSTRIPE 9124W ET CHURCHILL LADY 202  
 42992946 CHURCHILL LADY 404 CL1 DOMINO 9126J 1ET  
 BB 9131 DOMINO 1083 CHURCHILL LADY 1192  
 BB MS 1083 DOMINO 5101 CL 1 DOMINO 9131J  
 42601055 BB MS 32F SANDMAN 2244 BB MS 4209 MDON9130  
 BP 146D SANDMAN32F  
 BB MS SELKIRK 4089

Act BW	CED	BW	WW	YW	M	M&G	CEM
<b>80</b>	<b>2.1</b>	<b>2.7</b>	<b>52</b>	<b>87</b>	<b>24</b>	<b>50</b>	<b>24</b>
SC	FAT	RI	IMF	BMI	CEZ	BII	CHB
<b>0.5</b>	<b>0.004</b>	<b>0.49</b>	<b>0.26</b>	<b>\$17</b>	<b>\$16</b>	<b>\$13</b>	<b>\$30</b>



# 108 BB PINSTRIPE 3086

Calved 4-3-2013 Bull 4340181 Tattoo B3086

CHURCHILL YANKEE ET GH NEON 17N  
 CHURCHILL PINSTRIPE 9124W ET CHURCHILL LADY 202  
 42992946 CHURCHILL LADY 404 CL 1 DOMINO 9126J 1ET  
 CL 1 DOMINO 9131J CHURCHILL LADY 1192  
 BB MS 9131 DOMINO 9136 CL 1 DOMINO 5131E  
 43117156 BB MS 9561 DOM 7191ET L1 DOMINETTE 4148  
 BBMS32FSANDMAN9149 L1 DOMINO 95461

Act BW	CED	BW	WW	YW	M	M&G	CEM
<b>77</b>	<b>2.9</b>	<b>2.7</b>	<b>54</b>	<b>90</b>	<b>24</b>	<b>51</b>	<b>2.1</b>
SC	FAT	RI	IMF	BMI	CEZ	BII	CHB
<b>0.6</b>	<b>0.012</b>	<b>0.34</b>	<b>0.25</b>	<b>\$17</b>	<b>\$16</b>	<b>\$13</b>	<b>\$30</b>



# 109 BB 3027 DOMINO 3502

Calved 2-18-2013 Bull Pending Tattoo 3502

CL 1 DOMINO 9126J 1E T HH ADVANCE 767G 1ET  
 UPS DOMINO 3027 CL 1 DOMINETTE 490  
 42426386 UPS MISS DIAMOND 1353 SH DIAMOND 881  
 BB MARK DONALD 3007 UPS MS MILEHIGH 8330  
 R/J MS MARK 1002 BB MARK DONALD 386  
 43186190 NX MS MARK DONALD 5411 BB MS M CLASSIC 8150  
 NXMS MARKARTHUR2411

Act BW	CED	BW	WW	YW	M	M&G	CEM
<b>80</b>	<b>5.3</b>	<b>0.9</b>	<b>39</b>	<b>62</b>	<b>29</b>	<b>49</b>	<b>2.9</b>
SC	FAT	RI	IMF	BMI	CEZ	BII	CHB
<b>0.9</b>	<b>-0.007</b>	<b>0.28</b>	<b>0.14</b>	<b>\$20</b>	<b>\$20</b>	<b>\$17</b>	<b>\$22</b>

# 110 BB PINSTRIPE 3140

Calved 5-15-2013 Bull 43412401 Tattoo B3140

CHURCHILL YANKEE ET GH NEON 17N  
 CHURCHILL PINSTRIPE 9124W ET CHURCHILL LADY 202  
 42992946 CHURCHILL LADY 404 CL 1 DOMINO 9126J 1ET  
 DHR L1 SELKIRK CHURCHILL LADY 1192  
 BB MS 735 SELKIRK 6071 LONESTARDOMINO 75B  
 42721223 BB MS 9131 DOMINO 3278 LS STARMARKETTE 66C  
 CL 1 DOMINO 9131J  
 BB MS 9131DOMINO1178

Act BW	CED	BW	WW	YW	M	M&G	CEM
<b>72</b>	<b>2.7</b>	<b>2.8</b>	<b>44</b>	<b>71</b>	<b>23</b>	<b>45</b>	<b>1.5</b>
SC	FAT	RI	IMF	BMI	CEZ	BII	CHB
<b>0.4</b>	<b>-0.004</b>	<b>0.16</b>	<b>0.15</b>	<b>\$15</b>	<b>\$16</b>	<b>\$12</b>	<b>\$23</b>

# 111 BB 159 DOMINO 3098

Calved 4-14-2013 Bull 43402169 Tattoo B3098

CL 1 DOMINO 993W CL 1 DOMINO 637S 1ET  
 CL 1 DOMINO 159Y 1ET CL 1 DOMINETTE 5142R  
 43216160 CL I DOMINETTE 6159S HH ADVANCE 3113N 1ET  
 BB 5097 DOMINO 7052 BB 1083 DOMINO 5097  
 BB MS 7052 DOMINO 0039 BB MS 1065 DOM 5014  
 43128174 BB MS 5105 DOMINO 8036 BB 1065 DOMINO 5105  
 BB MS 767G ADV 4080

Act BW	CED	BW	WW	YW	M	M&G	CEM
<b>79</b>	<b>2.6</b>	<b>2.5</b>	<b>47</b>	<b>70</b>	<b>30</b>	<b>53</b>	<b>1.6</b>
SC	FAT	RI	IMF	BMI	CEZ	BII	CHB
<b>0.7</b>	<b>0.006</b>	<b>0.26</b>	<b>-0.01</b>	<b>\$14</b>	<b>\$16</b>	<b>\$12</b>	<b>\$20</b>





**112 BB 1018 DOMINO 3108**  
 Calved 4-24-2013 Bull 43402179 Tattoo B3108

UPS DOMINO 3027 CL 1 DOMINO 9126J 1ET  
 BB 3027 DOMINO 1018 UPS MISS DIAMOND 1353  
 43193486 BB MS MONUMENT 6007 MH MONUMENT 3147  
 HP HOME BLDR 124H BB MS 32F SANDMAN 0028  
 BB MS 124H HOME BLDR 3207 HH HOME BUILDER  
 42415061 BB MISS KERNEL 1496 GH COSMO LASS 69E  
 BB MISS KERNEL 1496 BB KERNEL 8100  
 BB MS HI TECH 9296

Act BW	CED	BW	WW	YW	M	M&G	CEM
<b>85</b>	<b>1.0</b>	<b>4.6</b>	<b>46</b>	<b>84</b>	<b>27</b>	<b>50</b>	<b>1.4</b>
SC	FAT	RI	IMF	BMI	CEZ	BII	CHB
<b>0.6</b>	<b>-0.005</b>	<b>0.2</b>	<b>0.04</b>	<b>\$13</b>	<b>\$14</b>	<b>\$10</b>	<b>\$22</b>

**113 BB 1018 DOMINO 3116**  
 Calved 5-6-2013 Bull 43412103 Tattoo B3116

UPS DOMINO 3027 CL 1 DOMINO 9126J 1ET  
 BB 3027 DOMINO 1018 UPS MISS DIAMOND 1353  
 43193486 BB MS MONUMENT 6007 MH MONUMENT 3147  
 BB MARK DONALD 3007 BB MS 32F SANDMAN 0028  
 BB MS 3007 DOMINO 7045 BB MARK DONALD 386  
 42854848 BB MS 1065 DOMINO 4077 BB MS M CLASSIC 8150  
 BB MS 1065 DOMINO 4077 BB 7Z STD LAD 4033  
 BB MS 4209 M DON 0330

Act BW	CED	BW	WW	YW	M	M&G	CEM
<b>77</b>	<b>2.2</b>	<b>3.4</b>	<b>48</b>	<b>79</b>	<b>28</b>	<b>51</b>	<b>0.9</b>
SC	FAT	RI	IMF	BMI	CEZ	BII	CHB
<b>0.7</b>	<b>-0.007</b>	<b>0.36</b>	<b>0.03</b>	<b>\$15</b>	<b>\$15</b>	<b>\$12</b>	<b>\$23</b>

**114 BB 1018 DOMINO 3125**  
 Calved 5-6-2013 Bull 43412129 Tattoo B3125

UPS DOMINO 3027 CL 1 DOMINO 9126J 1ET  
 BB 3027 DOMINO 1018 UPS MISS DIAMOND 1353  
 43193486 BB MS MONUMENT 6007 MH MONUMENT 3147  
 BB 9131 DOMINO 1083 BB MS32F SANDMAN0028  
 BB MS 1083 DOMINO 9008 CL 1 DOMINO 9131J  
 43117027 BB MS 9131 DOM 6064 CL 1 DOMINO 9131J  
 BB MS32FSANDMAN 0033

Act BW	CED	BW	WW	YW	M	M&G	CEM
<b>79</b>	<b>2.9</b>	<b>4.2</b>	<b>54</b>	<b>97</b>	<b>24</b>	<b>51</b>	<b>1.0</b>
SC	FAT	RI	IMF	BMI	CEZ	BII	CHB
<b>0.7</b>	<b>0.007</b>	<b>0.37</b>	<b>0.06</b>	<b>\$15</b>	<b>\$15</b>	<b>\$11</b>	<b>\$27</b>

**115 BB EXCLUSIVE 3135**  
 Calved 5-9-2013 Bull 43415345 Tattoo B3135

UPS DOMINO 3027 CL 1 DOMINO 9126J 1ET  
 BB EXCLUSIVE 1026 UPS MISS DIAMOND 1353  
 43216267 BB MS 013 SANDMAN 4231 TL 32F SANDMAN 013  
 BB 9131 DOMINO 1083 BB MS 7Z S LAD 8125  
 BB MS 1083 DOMINO 9008 XP L1 DOMINO 01050  
 43117027 BB MS 9131 DOM 6064 BJ L1 DOM 2069  
 BB MS 2637 BJ DOMINO 0098 BB 3007 M DON 5132  
 43128267 BB MS 5132 M DON 8042 BB MS013SANDMAN4231

Act BW	CED	BW	WW	YW	M	M&G	CEM
<b>74</b>	<b>2.5</b>	<b>3.1</b>	<b>51</b>	<b>82</b>	<b>25</b>	<b>50</b>	<b>2.0</b>
SC	FAT	RI	IMF	BMI	CEZ	BII	CHB
<b>1.0</b>	<b>0.019</b>	<b>0.44</b>	<b>0.31</b>	<b>\$22</b>	<b>\$17</b>	<b>\$19</b>	<b>\$29</b>

**116 BB 3007 MARK DON 3114**  
 Calved 5-5-2013 Bull 43412098 Tattoo B3114

BB MARK DONALD 386 BB MARK DONALD 549  
 BB MARK DONALD 3007 LADY SELKIRK J770  
 42364214 BB MS M CLASSIC 8150 NX MARK CLASS 4411  
 BB 9131 DOMINO 1049 BB MS DOM 3001 1ET  
 BB MS 1049 DOMINO 3113 CL 1 DOMINO 9131J  
 42380551 BB MS BJ DOMINO 1126 BB MS SANDMAN9081  
 BB L1 DOMINO 9502  
 BB MS WASH 9167

Act BW	CED	BW	WW	YW	M	M&G	CEM
<b>80</b>	<b>0.2</b>	<b>4.6</b>	<b>45</b>	<b>65</b>	<b>30</b>	<b>52</b>	<b>-0.2</b>
SC	FAT	RI	IMF	BMI	CEZ	BII	CHB
<b>0.6</b>	<b>-0.013</b>	<b>0.24</b>	<b>-0.07</b>	<b>\$12</b>	<b>\$13</b>	<b>\$11</b>	<b>\$18</b>

**117 BB 3007 MARK DON 3077**  
 Calved 5-27-2013 Bull 43390209 Tattoo B3077

BB MARK DONALD 386 BB MARK DONALD 549  
 BB MARK DONALD 3007 LADY SELKIRK J770  
 42364214 BB MS M CLASSIC 8150 NX MARK CLASS 4411  
 CHURCHILL YANKEE ET BB MS DOM 3001 1ET  
 BB MS YANKEE 8011 GH NEON 17N  
 43121828 BB MS 4209 M DON 3065 CHURCHILL LADY 202  
 BB MARK DON 4209  
 BB MS WASH 6028

Act BW	CED	BW	WW	YW	M	M&G	CEM
<b>74</b>	<b>1.0</b>	<b>2.2</b>	<b>42</b>	<b>68</b>	<b>24</b>	<b>45</b>	<b>1.5</b>
SC	FAT	RI	IMF	BMI	CEZ	BII	CHB
<b>0.6</b>	<b>-0.01</b>	<b>0.28</b>	<b>0.11</b>	<b>\$16</b>	<b>\$15</b>	<b>\$14</b>	<b>\$21</b>

**118 BB 1050 ADVANCE 3137**  
 Calved 5-11-2013 Bull 43412381 Tattoo B3137

UPS DOMINO 3027 CL 1 DOMINO 9126J 1ET  
 CX 3027 ADVANCE 1050 UPS MISS DIAMOND 1353  
 43242410 MCR HRLD MARK 883ET CJH HARLAND 408  
 CHURCHILL YANKEE ET MCR MARK DOM 4125  
 BB MS YANKEE 1017 GH NEON 17N  
 43193481 BB MS MONUMENT 6038 CHURCHILL LADY 202  
 BB MS 124H HB 0296 MH MONUMENT 3147  
 BB MS 124H HB 0296

Act BW	CED	BW	WW	YW	M	M&G	CEM
<b>77</b>	<b>2.3</b>	<b>4.5</b>	<b>59</b>	<b>94</b>	<b>27</b>	<b>57</b>	<b>2.2</b>
SC	FAT	RI	IMF	BMI	CEZ	BII	CHB
<b>0.7</b>	<b>0.007</b>	<b>0.39</b>	<b>0.22</b>	<b>\$18</b>	<b>\$16</b>	<b>\$13</b>	<b>\$32</b>

**119 BB 1050 ADVANCE 3051**  
 Calved 3-18-2013 Bull 43390051 Tattoo B3051

UPS DOMINO 3027 CL 1 DOMINO 9126J 1ET  
 CX 3027 ADVANCE 1050 UPS MISS DIAMOND 1353  
 43242410 MCR HRLD MARK 883ET CJH HARLAND 408  
 CHUCHILL NEON 626S MCR MARK DOM 4125  
 BB MS 626 NEON 1056 GH NEON 17N  
 43198599 BB MS 4033 LAD 4022 CHURCHILL LADY 346  
 BB MS 32FSANDMAN0004 BB 7Z STD LAD 4033  
 BB MS 32FSANDMAN0004

Act BW	CED	BW	WW	YW	M	M&G	CEM
<b>73</b>	<b>4.4</b>	<b>1.9</b>	<b>47</b>	<b>78</b>	<b>26</b>	<b>49</b>	<b>4.3</b>
SC	FAT	RI	IMF	BMI	CEZ	BII	CHB
<b>0.7</b>	<b>-0.01</b>	<b>0.49</b>	<b>0.06</b>	<b>\$18</b>	<b>\$19</b>	<b>\$14</b>	<b>\$25</b>

**120 BB PINSTRIPE 3060**  
 Calved 3-20-2013 Bull 43390070 Tattoo B3060

CHURCHILL YANKEE ET GH NEON 17N  
 CHURCHILL PINSTRIPE 9124W ET CHURCHILL LADY 202  
 42992946 CHURCHILL LADY 404 CL1 DOMINO 9126J 1ET  
 BB 32F SANDMAN 0257 CHURCHILL LADY 1192  
 BB MS 0257 SANDMAN 3157 BP 146DSANDMAN32F  
 42398925 BB MS 4052 LAD 7270 BB MS LIBERTY 7096  
 BB MS 91J DOM 9489 BB 7Z STD LAD 4052  
 BB MS 91J DOM 9489

Act BW	CED	BW	WW	YW	M	M&G	CEM
<b>78</b>	<b>1.1</b>	<b>3.2</b>	<b>50</b>	<b>86</b>	<b>20</b>	<b>45</b>	<b>2.4</b>
SC	FAT	RI	IMF	BMI	CEZ	BII	CHB
<b>0.6</b>	<b>-0.001</b>	<b>0.41</b>	<b>0.16</b>	<b>\$17</b>	<b>\$15</b>	<b>\$14</b>	<b>\$27</b>

# 121 BB 1141 DOMINO 3080

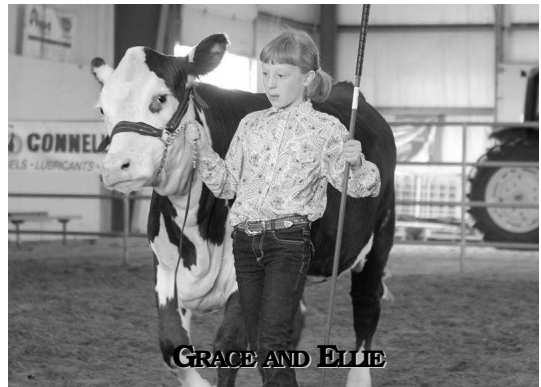
Calved 3-28-2013 Bull 43390212 Tattoo B3080

BJ L1 DOMINO 2637  
BB 2637 L1 DOMINO 1141  
43218886 BB MS 4033 LAD 9026

XP L1 DOMINO 01050  
BJ L1 DOMINETTE 2069  
BB 7Z STD LAD 4033  
BB MS L1 DOM 9459  
GH NEON 17N  
CHURCHILL LADY 303  
BB 9131 DOMINO 1065  
BB MS 6149CLASS 3163

CHURCHILL NEON 7127T ET  
BB MS 7127 NEON 1079  
43208544 BB MS 1065 DOMINO 8054

Act BW	CED	BW	WW	YW	M	M&G	CEM
69	0.9	2.0	42	62	19	40	1.9
SC	FAT	RI	IMF	BMI	CEZ	BII	CHB
0.6	0.006	0.28	0.06	\$16	\$16	\$15	\$19



GRACE AND ELLIE

# 122 BB 3027 DOMINO 3097

Calved 4-14-2013 Bull 43402168 Tattoo B3097

CL 1 DOMINO 9126J 1ET  
UPS DOMINO 3027  
42426386 UPS MS DIAMOND 1353

HH ADVANCE 767G 1ET  
CL 1 DOMINETTE 490  
SH DIAMOND 881  
UPS MS MILEHIGH 8330  
CL 1 DOMINO 9131J  
BB MS SANDMAN 9149  
BB WASHINGTON 2041  
BB MS PATRIOT 5121

BB 9131 DOMINO 1065  
BB MS 1065 DOMINO 5097  
42601052 BB MS WASH 5097

Act BW	CED	BW	WW	YW	M	M&G	CEM
82	6.4	1.9	47	78	28	52	4.3
SC	FAT	RI	IMF	BMI	CEZ	BII	CHB
0.7	0.001	0.31	0.18	\$19	\$21	\$14	\$27

# 126 BB 2637 DOMINO 3035

Calved 3-12-2013 Bull 43390031 Tattoo B3035

CL 1 DOMINO 9126J 1ET  
UPS DOMINO 3027  
42426386 UPS MS DIAMOND 1353

HH ADVANCE 767G 1ET  
CL 1 DOMINETTE 490  
SH DIAMOND 881  
UPS MS MILEHIGH 8330  
CL 1 DOMINO 9131J  
BB MS SANDMAN 9149  
BB WASHINGTON 2041  
BB MS PATRIOT 5121

BB 9131 DOMINO 1065  
BB MS 1065 DOMINO 5097  
42601052 BB MS WASH 5097

XP L1 DOMINO 01050  
BJ L1 DOMINO 2637  
42778558 BJ L1 DOMINETTE 2069  
BB MARK DONALD 3007  
BB MS 3007 MARK DON 0112  
43128282 BB MS 0257 SANDMAN 3173

XP L1 DOMINO 99013  
XP L1 DOM 98024  
CL 1 DOMINO 4120 ET  
BJ MS ADVANCE 9427  
BB MARK DON 386  
BB MS M CLASS 8150  
BB 32FSANDMAN0257  
BB MS 6330STAN9123

Act BW	CED	BW	WW	YW	M	M&G	CEM
75	0.7	1.5	38	59	22	42	0.0
SC	FAT	RI	IMF	BMI	CEZ	BII	CHB
0.9	0.002	0.29	0.04	\$17	\$15	\$18	\$17

# 123 BB 159 DOMINO 3107

Calved 4-24-2013 Bull 43402178 Tattoo B3107

CL 1 DOMINO 993W  
CL 1 DOMINO 159Y 1ET  
43216160 CL I DOMINETTE 6159S

CL 1 DOMINO 637S 1ET  
CL 1 DOMINETTE 5142R  
HH ADVANCE 3113N 1ET  
CL1 DOM 4200P 1ET  
XP L1 DOMINO 01050  
BJ L1 DOM 2069  
BB MARK DON 3007  
BB MS 4033 LAD 5065

BJ L1 DOMINO 2637  
BB MS 2637 BJ DOMINO 0050  
43128207 BB MS 3007 MARK DON 8103

CJH HARLAND 408  
SR SAGA 239W  
43017219 SR ROSA 323  
BB 9131 DOMINO 1065  
BB MS 1065 DOMINO 4015  
42470913 BB MS 4209 MARK DON 1077

HH ADVANCE 9005J  
CJH L1 DOMINETTE 0066  
CTY BONANZA 01K  
SR SABRINA 984  
CL 1 DOMINO 9131J  
BB MS SANDMAN 9149  
BB MARK DON 4209  
BB MS 4177 6191

Act BW	CED	BW	WW	YW	M	M&G	CEM
78	1.3	2.7	51	76	32	57	0.7
SC	FAT	RI	IMF	BMI	CEZ	BII	CHB
1.0	0.013	0.38	-0.05	\$16	\$15	\$14	\$21

Act BW	CED	BW	WW	YW	M	M&G	CEM
80	1.4	3.3	48	83	21	45	2.2
SC	FAT	RI	IMF	BMI	CEZ	BII	CHB
0.8	-0.004	0.4	-0.01	\$17	\$16	\$14	\$23

# 124 BB 3007 MARK DON 3106

Calved 4-23-2013 Bull 43402177 Tattoo B3106

BB MARK DONALD 386  
BB MARK DONALD 3007  
42364214 BB MS M CLASSIC 8150

BB MARK DONALD 549  
LADY SELKIRK J770  
NX MARK CLASS 4411  
BB MS DOM 3001 1ET  
CL 1 DOMINO 9131J  
BBMS4209M DON9130  
TL 32F SANDMAN 013  
BB MS 7Z S LAD 8125

BB 9131 DOMINO 1083  
BB MS 1083 DOMINO 7150  
43040072 BB MS 013 SANDMAN 4231

CJH HARLAND 408  
SR SAGA 239W  
43017219 SR ROSA 323  
CHURCHILL NEON 626S  
BB MS 626 NEON 0010  
43128108 BB MS MARK 5100

HH ADVANCE 9005J  
CJH L1 DOMINETTE 0066  
CTY BONANZA 01K  
SR SABRINA 984  
GH NEON 17N  
CHURCHILL LADY 346  
SR BIG ARTHUR H201  
BB MS M CLASS 8150

Act BW	CED	BW	WW	YW	M	M&G	CEM
81	1.2	3.1	48	75	29	53	0.1
SC	FAT	RI	IMF	BMI	CEZ	BII	CHB
0.8	0.001	0.42	0.08	\$16	\$15	\$14	\$20

Act BW	CED	BW	WW	YW	M	M&G	CEM
84	0.7	4.1	54	94	26	53	1.6
SC	FAT	RI	IMF	BMI	CEZ	BII	CHB
0.9	-0.006	0.55	-0.01	\$16	\$14	\$13	\$26

# 125 BB 3007 MARK DON 3109

Calved 4-25-2013 Bull 43402180 Tattoo B3109

BB MARK DONALD 386  
BB MARK DONALD 3007  
42364214 BB MS M CLASSIC 8150

BB MARK DONALD 549  
LADY SELKIRK J770  
NX MARK CLASS 4411  
BB MS DOM 3001 1ET  
CL 1 DOMINO 9131J  
BB MS SANDMAN9149  
BB MARK CALSS 6149  
BB MS 7Z S LAD 6184

BB 9131 DOMINO 1065  
BB MS 1065 DOMINO 8163  
43117003 BB MS 9149 CLASSIC 1204

CL 1 DOMINO 637S 1ET  
CL 1 DOMINO 994W 1ET  
42982456 CL 1 DOMI440P 1ET  
CHURCHILL DOM 5160R  
BB MS 5160R DOMINO 9004  
43117017 BB MS 9131 DOMINO 4131

L1 DOMINO 03396  
CL 1 DOMINETTE 118L  
CL 1 DOMINO 9126J 1ET  
CL 1 DOMINETTE 974J  
CL 1 DOMINO 285M  
CHURCHILL LADY 0102  
CL 1 DOMINO 9131J  
BB MS 2000M DON2040

Act BW	CED	BW	WW	YW	M	M&G	CEM
80	1.0	3.3	45	68	28	51	0.3
SC	FAT	RI	IMF	BMI	CEZ	BII	CHB
0.6	-0.019	0.34	-0.01	\$14	\$14	\$12	\$21

Act BW	CED	BW	WW	YW	M	M&G	CEM
83	0.7	4.4	48	82	23	47	-1.8
SC	FAT	RI	IMF	BMI	CEZ	BII	CHB
0.9	-0.004	0.33	0.15	\$18	\$14	\$16	\$25

Lot 130-132 these are three look alike by BVR Raftsman 028X. Everybody in the polled business knows about Harvie Raftsman 16R. He sires big long well marked red eyed bulls most of them dark red. These three are not different, they are three really good prospects.

# 130 BB 028X RAFTSMAN 3160

Calved 10-2-2013 Bull 43450954 Tattoo B3160

HARVIE RAFTSMAN 16R  
BVR RAFTSMAN 028X ET  
43154805 CIRCLE-D 832W WILMA 19F

HARVIE LADIES MAN 4L  
HARVIE MS FIREFLY51F  
CIRCLE-D WRANG 832W  
TWIN J MS STK 167R  
CHJ HARLAND 408  
SR MANDY 0101  
BB MARK DONALD 3007  
BB MS WASH 8101

SR COMPASS 1117  
BB MS 1117 COMPASS 0134  
43128315 BB MS 3007 M DON 7063

Act BW	CED	BW	WW	YW	M	M&G	CEM
<b>74</b>	<b>0.9</b>	<b>3.5</b>	<b>51</b>	<b>79</b>	<b>24</b>	<b>49</b>	<b>1.4</b>
SC	FAT	RI	IMF	BMI	CEZ	BII	CHB
<b>0.8</b>	<b>0.034</b>	<b>0.26</b>	<b>0.04</b>	<b>\$16</b>	<b>\$15</b>	<b>\$13</b>	<b>\$21</b>

# 131 BB 028X RAFTSMAN 3161

Calved 10-8-2013 Bull 43450955 Tattoo B3161

HARVIE RAFTSMAN 16R  
BVR RAFTSMAN 028X ET  
43154805 CIRCLE-D 832W WILMA 19F

HARVIE LADIES MAN 4L  
HARVIE MS FIREFLY51F  
CIRCLE-D WRANG 832W  
TWIN J MS STK 167R  
GH NEON 17N  
CHURCHILL LADY 303  
DHR L1 SELKIRK  
BB MS 9131 DOM 3027

CHURCHILL NEON 7127T ET  
BB MS 7127 NEON 0066  
43128233 BB MS SELKIRK 5106

Act BW	CED	BW	WW	YW	M	M&G	CEM
<b>75</b>	<b>0.7</b>	<b>4.2</b>	<b>47</b>	<b>76</b>	<b>21</b>	<b>44</b>	<b>1.3</b>
SC	FAT	RI	IMF	BMI	CEZ	BII	CHB
<b>0.4</b>	<b>-0.018</b>	<b>0.5</b>	<b>0.03</b>	<b>\$14</b>	<b>\$14</b>	<b>\$12</b>	<b>\$23</b>

# 132 BB 028X RAFTSMAN 3170

Calved 11-16-2013 Bull 43450956 Tattoo B3170

HARVIE RAFTSMAN 16R  
BVR RAFTSMAN 028X ET  
43154805 CIRCLE-D 832W WILMA 19F

HARVIE LADIES MAN 4L  
HARVIE MS FIREFLY51F  
CIRCLE-D WRANG 832W  
TWIN J MS STK 167R  
CJH HARLAND 408  
SR MANDY 0101  
DHR L1 SELKIRK  
BB MS 9131 DOM 3278

SR COMPASS 1117  
BB MS 1117 COMPASS 0132  
43128313 BB MS 735 SELKIRK 6071

Act BW	CED	BW	WW	YW	M	M&G	CEM
<b>75</b>	<b>1.2</b>	<b>3.6</b>	<b>45</b>	<b>69</b>	<b>21</b>	<b>3</b>	<b>1.1</b>
SC	FAT	RI	IMF	BMI	CEZ	BII	CHB
<b>0.6</b>	<b>0.034</b>	<b>0.05</b>	<b>-0.01</b>	<b>\$13</b>	<b>\$15</b>	<b>\$12</b>	<b>\$16</b>

# 133 BB TAILOR MADE 3070

Calved 3-24-2013 Bull 43390077 Tattoo B3070

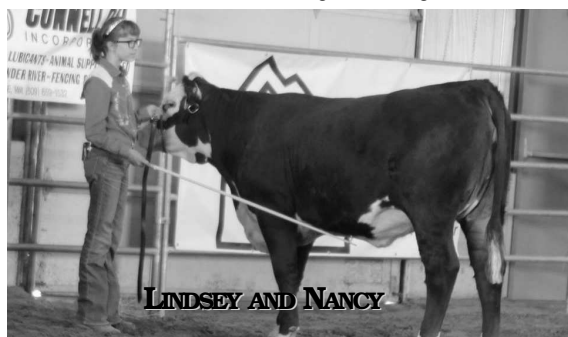
HARVIE TRAVELER 69T  
HARVIE TAILOR MADE ET 7W  
43164954 HARVIE MISS FIREFLY 51F

KAIRURU ABBN 03 0047  
HARVIE PEARL 129P  
HARVIE DEYNOTE 61D  
HARVIE MISS NYLON 1Y  
HCC NAVIGATOR 4N  
HN MS 1082 FELT 316  
BP HOME BUILDER 124H  
BB MSCHURCHPAT9029

HN MR 4N 643  
BB MS NAVIGATOR 8120  
43052407 BB MS 124H H B 2143

Act BW	CED	BW	WW	YW	M	M&G	CEM
<b>96</b>	<b>-4.7</b>	<b>6.9</b>	<b>56</b>	<b>93</b>	<b>8</b>	<b>36</b>	<b>1.4</b>
SC	FAT	RI	IMF	BMI	CEZ	BII	CHB
<b>0.7</b>	<b>-0.004</b>	<b>0.3</b>	<b>-0.14</b>	<b>\$14</b>	<b>\$10</b>	<b>\$13</b>	<b>\$21</b>

This big stout bull is sired by Harvie Tailor Made. One of the top Polled Hereford bulls of the breed. This bull is good enough for a herd sire.



We have two good Raftsman bulls both with redeyes, they are big stout polled bulls ready to go to work. They are going to be big heavy boned bulls.

# 134 HN RAFTSMAN 28X 1302

Calved 2-18-2013 Bull 43388848 Tattoo 1302

HARVIE RAFTSMAN 16R  
BVR RAFTSMAN 028X ET  
43154805 CIRCLE-D 832W WILMA 19F

HARVIE LADIES MAN 4L  
HARVIE MS FIREFLY51F  
CIRCLE-D WRANG 832W  
TWIN J MS STK 167R  
REMITALL ONLINE 122L  
HAROLDSONSARA20X22J  
BB CHURCH PATROL 9061  
BB MS 7154 INTER 9129

HCC NAVIGATOR 4N  
HN MS 4N 616  
42697234 HN MS 9061 PATROL 314

Act BW	CED	BW	WW	YW	M	M&G	CEM
<b>80</b>	<b>0.5</b>	<b>4.1</b>	<b>51</b>	<b>81</b>	<b>17</b>	<b>43</b>	<b>0.9</b>
SC	FAT	RI	IMF	BMI	CEZ	BII	CHB
<b>0.5</b>	<b>-0.001</b>	<b>0.38</b>	<b>-0.03</b>	<b>\$14</b>	<b>\$14</b>	<b>\$12</b>	<b>\$22</b>

# 135 HN RAFTSMAN 28X 1321

Calved 4-7-2013 Bull 43388518 Tattoo N1321

HARVIE RAFTSMAN 16R  
BVR RAFTSMAN 028X ET  
43154805 CIRCLE-D 832W WILMA 19F

HARVIE LADIES MAN 4L  
HARVIE MS FIREFLY51F  
CIRCLE-D WRANG832W  
TWIN J MS STK 167R  
CL 1 DOMINO 5131E  
CL 1 DOMINETTE 4148  
RRH MR FELT 1082  
HN MS NEW IDEA N134

CL 1 DOMINO 9131J  
HN MS 9131J 637  
42697225 HN MS 1082 FELT 420

Act BW	CED	BW	WW	YW	M	M&G	CEM
<b>72</b>	<b>1.8</b>	<b>3.3</b>	<b>47</b>	<b>82</b>	<b>18</b>	<b>41</b>	<b>0.2</b>
SC	FAT	RI	IMF	BMI	CEZ	BII	CHB
<b>0.7</b>	<b>0.001</b>	<b>0.17</b>	<b>0.04</b>	<b>\$16</b>	<b>\$15</b>	<b>\$14</b>	<b>\$22</b>

We have a set of twins they will be 2 years old in March sired by our Saga bull. They are meaty thick kind of bulls ready to go to work.

# 136 HN THIRD EDITION 1310

Calved 3-1-2013 Bull 43434597 Tattoo N1310

CJH HARLAND 408  
SR SAGA 239W  
43017219SR ROSA 323

HH ADVANCE 9005J  
CJH L1 DOM 00613  
CTY BONANZA 01K  
SR SABRINA 991  
RRH MS FELT 6059  
RRH MS FELT 5056  
VPI LIMITED EDITIONJ921  
HN MS 9061 PATROL 412

RRH MR FELT 1082  
HN MS 1082 N909  
434055153 HN SPECIAL EDITION 628

Act BW	CED	BW	WW	YW	M	M&G	CEM
<b>72</b>	<b>2.2</b>	<b>3.1</b>	<b>45</b>	<b>81</b>	<b>21</b>	<b>43</b>	<b>2.6</b>
SC	FAT	RI	IMF	BMI	CEZ	BII	CHB
<b>1.3</b>	<b>-0.002</b>	<b>0.22</b>	<b>0.08</b>	<b>\$22</b>	<b>\$18</b>	<b>\$20</b>	<b>\$22</b>

# 137 HN THIRD EDITION 1311

Calved 3-1-2013 Bull 43434614 Tattoo N1311

CJH HARLAND 408  
SR SAGA 239W  
43017219 SR ROSA 323

HH ADVANCE 9005J  
CJH L1 DOM 00613  
CTY BONANZA 01K  
SR SABRINA 991  
RRH MS FELT 6059  
RRH MS FELT 5056  
VPI LIMITED EDITIONJ921  
HN MS 9061 PATROL 412

RRH MR FELT 1082  
HN MS 1082 N909  
434055153 HN SPECIAL EDITION 628

Act BW	CED	BW	WW	YW	M	M&G	CEM
<b>71</b>	<b>2.2</b>	<b>3.1</b>	<b>54</b>	<b>94</b>	<b>21</b>	<b>48</b>	<b>2.6</b>
SC	FAT	RI	IMF	BMI	CEZ	BII	CHB
<b>1.4</b>	<b>-0.002</b>	<b>0.22</b>	<b>0.08</b>	<b>\$23</b>	<b>\$18</b>	<b>\$20</b>	<b>\$27</b>





**138 BB TEN X 4010**  
Calved 2-20-2014 Bull 17822275 Tattoo 4010

MYTTY IN FOCUS SAF FOCUS OF ER  
AAR TEN X 7008 SA MYTTY COUNTESS 906  
15719841 AAR LADY KELTON 5551 SAV ADAPTOR 2213  
ANK WERNER WILD FIRE96 HSAF LADY KELTON 504B  
BB MS FIREFLY 8063 SAV 8180 TRAVELER 004  
16357436 BB SCOTCH LASS 4078 FSR ELBA SPEC DES406  
NEW DESIGN P A R 3  
BB SCOTCH LASS 2377

Act BW	CED	BW	WW	YW	M	CEM
<b>77</b>	<b>10</b>	<b>-.4</b>	<b>55</b>	<b>101</b>	<b>19</b>	<b>10</b>
SEN	% IMF	RE	FAT	SW	SF	\$G
<b>-10.47</b>	<b>1+.93</b>	<b>1+.54</b>	<b>1+.012</b>	<b>37.63</b>	<b>55.23</b>	<b>42.11</b>
						<b>124.9</b>

A really good set of bull calves to start the Angus sale. 4010 is a Ten X son out of a Wild Fire cow and he is a good one. We've had some good bulls to start this Angus sale but I don't think we have had one as good as this fellow. He is a really easy bull to handle. One doesn't have to say anything about his sire, he is the top sire all over the US, siring top cattle in every major sale all over the country. His dam is a great cow sired by Denver Champion Ankonian Werner Wild Fire 96. Wild Fire's females have great udders. Does this calf have the ideal EPD's CED +10, BW -0.4, WW 55, YW 101, M 19, carcass EPD's marbling +0.93, RE +0.54, \$F 55.23, \$G 42.11, \$W 37.63, \$B 124.9. You will look a long ways to find one that looks this good and has this good of numbers across the board. We will sell 1/2 interest and 1/2 possession to the benefit of the buyer. Selling semen to be decided by buyer and seller.

**139 BB MISSING LINK 4001**  
Calved 1-2-2014 Bull 17820710 Tattoo 4001

OCC MISSING LINK 830M OCC HEADLINER 661H  
JACS MISSING LINK 9938 OCC DIXIE ERICA 946K  
16818737 JACS PEG 4308 PINE CRK TRVR124-1107  
L H R PEG 1051  
B/R FRONT RANGE 052 B/R NEW DESIGN 036  
BB MS WINSOME 1001 WHITE FENCE PRDE H1  
16963495 MAR MS WINSOME 5115 MA R GRANITE PEAK 3058  
MAR MS WINSOME 1007

Act BW	CED	BW	WW	YW	M	CEM
<b>80</b>	<b>4</b>	<b>1.7</b>	<b>50</b>	<b>81</b>	<b>27</b>	<b>8</b>
SEN	% IMF	RE	FAT	SW	SF	\$G
<b>-12.52</b>				<b>42.70</b>	<b>26.71</b>	

4001, what a powerful bull calf, very thick and long, just a great big thick stout calf. He is the kind that will sire steers that the feedlot will like. He has low BW 1.7, good growth 50 WW and 81 YW. He is sired by the bull we call Apple Jacs (Missing Link 9938). The Missing Link bull is one of the popular calving ease bulls being used extensively in AI. These cattle are great for maintaining their weight year round. The dam of 9938 is one of the best donor cows at Jac's Ranch. 4001's dam is a B/R Front Range 052, full brother to 095. 095 is one of the most popular bulls Bill Rischel ever raised. 052 bred equally as well for us.

Lot 140-141 these are also Missing Link calves, big stout calves with good EPD's. They fit the pattern with lots of thickness and volume with really low birth. These two will make great heifer bulls with low BW EPD's.

**140 BB MISSING LINK 4005**  
Calved 1-23-2014 Bull 17814028 Tattoo 4005

OCC MISSING LINK 830M OCC HEADLINER 661H  
JACS MISSING LINK 9938 OCC DIXIE ERICA 946K  
16818737 JACS PEG 4308 PINE CRK TRVR124-1107  
L H R PEG 1051  
SYDGEN CC & 7 SAF CONNECTION  
BB PRINCESS 1020 SYDFOREVER LADY4087  
17564369 BB PRINCESS 905 BB 004 TRAVELER 7049  
BB PRINCESS 3190

Act BW	CED	BW	WW	YW	M	CEM
<b>83</b>	<b>2</b>	<b>2.2</b>	<b>45</b>	<b>79</b>	<b>23</b>	<b>4</b>
SEN	% IMF	RE	FAT	SW	SF	\$G
<b>-4.85</b>				<b>32.75</b>	<b>26.62</b>	

**141 BB MISSING LINK 4002**  
Calved 1-4-2014 Bull 17814024 Tattoo 4002

OCC MISSING LINK 830M OCC HEADLINER 661H  
JACS MISSING LINK 9938 OCC DIXIE ERICA 946K  
16818737 JACS PEG 4308 PINE CRK TRVR124-1107  
L H R PEG 1051  
BB 004 TRAVELER 7049 SAV 8180 TRAVELER 004  
BB LADY 1023 BB LASSIE 4041  
17256261 BB LADY 5191 Y A INTRIGUE 716  
COX BELLE 908-5908

Act BW	CED	BW	WW	YW	M	CEM
<b>79</b>	<b>3</b>	<b>1.9</b>	<b>49</b>	<b>80</b>	<b>23</b>	<b>7</b>
SEN	% IMF	RE	FAT	SW	SF	\$G
<b>-5.39</b>				<b>38.93</b>	<b>25.78</b>	

4012 and 4014 these two calves are ET full brothers from some embryo's we bought from Jac's Ranch. Pat Haley the manager at Jac's tells me that the dam of these calves is one of the best cows they have ever had and the sire is a direct son of 2536 who many think is the best Angus cow ever of the Angus breed. A chance for some other blood lines in our Angus.

**142 BB 111 RITO 4012**  
Calved 3-1-2014 Bull 17861389 Tattoo 4012

RITO 616 OF 4B20 6807 DHD TRAVELER 6807  
RITO 111 OF 2536 RITO 616 RITA4B20OF 0FB1BANDO  
13793825 GAR PRECISION 2536 GAR PRECISION 1680  
GAR EXT 2104  
NBAR PRIMETIME D806 GARDENS PRIME TIME  
JACS TOREBY QUEEN 6262 NBAR MS EMULOUA404  
15390018 JACS TBY QUEEN 0315 PINECRK TRVLR 1241107  
JACS TBY QUEEN 5539

Act BW	CED	BW	WW	YW	M	CEM
<b>80</b>	<b>1+2</b>	<b>1+3.5</b>	<b>1+47</b>	<b>1+84</b>	<b>1+21</b>	<b>1+7</b>
SEN	% IMF	RE	FAT	SW	SF	\$G
<b>-3.78</b>	<b>1+.85</b>	<b>1+.32</b>	<b>1+.034</b>	<b>27.91</b>	<b>33.12</b>	<b>36.43</b>
						<b>105.4</b>



# 143 BB III RITO 4014

Calved 3-3-2014 Bull 17861392 Tattoo 4014

RITO 616 OF 4B20 6807 DHD TRAVELER 6807  
 RITO 111 OF 2536 RITO 616 RITA4B20OF 0FB1BANDO  
 13793825 GAR PRECISION 2536 GAR PRECISION 1680  
 GAR EXT 2104  
 NBAR PRIMETIME D806 GARDENS PRIME TIME  
 JACS TOREBY QUEEN 6262 NBAR MS EMULOUSA404  
 15390018 JACS TBY QUEEN 0315 PINECRK TRVLR 1241107  
 JACS TBY QUEEN 5539

Act BW	CED	BW	WW	YW	M	CEM	
<b>81</b>	<b>I+2</b>	<b>I+3.5</b>	<b>I+47</b>	<b>I+84</b>	<b>I+21</b>	<b>I+7</b>	
\$EN	% IMF	RE	FAT	\$W	\$F	\$G	\$B
<b>-3.78</b>	<b>I+.85</b>	<b>I+.32</b>	<b>I+0.34</b>	<b>27.91</b>	<b>33.12</b>	<b>36.43</b>	<b>105.4</b>

# 144 BB THUNDERBIRD 4006

Calved 1-30-2014 Bull 17895211 Tattoo 4006

SAV THUNDERBIRD 9061 SAV FINAL ANSWER 0035  
 BB THUNDERBIRD 2020 SAV EMBLYNETTE 7411  
 17459693 BB MS BANDO 8165 PL NAPOLEON R503  
 BB MS BARDO 1376  
 BB 004 TRAVELER 7049 SAV 8180 TRAVELER 004  
 BB MS BLACKBIRD 2001 BB LASSIE 4041  
 17302209 PL BLACKBIRD U262 RITO PLUS  
 LD BLACKBIRD 5304

Act BW	CED	BW	WW	YW	M	CEM	
<b>73</b>	<b>3</b>	<b>2.1</b>	<b>57</b>	<b>94</b>	<b>18</b>	<b>9</b>	
\$EN	% IMF	RE	FAT	\$W	\$F	\$G	\$B
<b>-5.03</b>				<b>38.81</b>	<b>42.72</b>		

4006 is a really nice calf out of our Thunderbird bull out of a 2 year old heifer by 004 Traveler 7049. This calf has an actual birth weight of 73 pounds, should be a heifer bull.

Lot 145-147 are really nice 9938 calves that should be great heifer bulls actual birth weights of 64, 74 and 75 pounds with low BW EPD's and real good other numbers. They are the easy keeping kind. They have very good \$EN numbers. Mike Paul says that is really important with these cattle running out in the scab brush.

# 145 BB MISSING LINK 4021

Calved 3-15-2014 Bull 17820715 Tattoo 4021

OCC MISSING LINK 830M OCC HEADLINER 661H  
 JACS MISSING LINK 9938 OCC DIXIE ERICA 946K  
 16818737 JACS PEG 4308 PINE CRK TRVLR 124-1115  
 L H R PEG 1055  
 BB 004 TRAVELER 7049 SAV 8180 TRAVELER 004  
 BB BLACKBIRD 0019 BB LASSIE 4041  
 16870739 PL BLACKBIRD U262 RITO PLUS  
 LD BLACKBIRD 5304

Act BW	CED	BW	WW	YW	M	CEM	
<b>64</b>	<b>5</b>	<b>1.2</b>	<b>52</b>	<b>86</b>	<b>22</b>	<b>7</b>	
\$EN	% IMF	RE	FAT	\$W	\$F	\$G	\$B
<b>-7.01</b>				<b>41.17</b>	<b>33.22</b>		

# 146 BB MISSING LINK 4016

Calved 3-5-2014 Bull 17820712 Tattoo 4016

OCC MISSING LINK 830M OCC HEADLINER 661H  
 JACS MISSING LINK 9938 OCC DIXIE ERICA 946K  
 16818737 JACS PEG 4308 PINE CRK TRVR 124-1109  
 L H R PEG 1053  
 BC 7022 RAVEN 7965 BC MARATHON 7022  
 BB BLACKBIRD 1013 OCC BLACKBIRD 796F  
 16952460LD BLACKBIRD 5304 WCC SPECIALDSGNL309  
 LD BLACKBIRD 3104

Act BW	CED	BW	WW	YW	M	CEM	
<b>74</b>	<b>4</b>	<b>1.6</b>	<b>48</b>	<b>81</b>	<b>21</b>	<b>7</b>	
\$EN	% IMF	RE	FAT	\$W	\$F	\$G	\$B
<b>-2.70</b>	<b>I+.34</b>	<b>I+.50</b>	<b>I+.019</b>	<b>36.66</b>	<b>27.90</b>	<b>25.92</b>	<b>82.50</b>

# 147 BB MISSING LINK 4027

Calved 3-26-2014 Bull 17895193 Tattoo 4027

OCC MISSING LINK 830M OCC HEADLINER 661H  
 JACS MISSING LINK 9938 OCC DIXIE ERICA 946K  
 16818737 JACS PEG 4308 PINE CRK TRVR124-1115  
 L H R PEG 1059  
 WCC SPL DESIGN L309 BONVIEWNEWDESIGN878  
 LD BLACKBIRD 5304 N BAR PRIMROSE 2424  
 15094638 LD BLACKBIRD 3104 BON VIEW BANDO 598  
 LD BLACKBIRD DB 1404

Act BW	CED	BW	WW	YW	M	CEM	
<b>75</b>	<b>5</b>	<b>1.2</b>	<b>52</b>	<b>86</b>	<b>23</b>	<b>8</b>	
\$EN	% IMF	RE	FAT	\$W	\$F	\$G	\$B
<b>-8.62</b>	<b>I+.36</b>	<b>I+.23</b>	<b>I+.035</b>	<b>41.78</b>	<b>33.22</b>	<b>20.16</b>	<b>84.33</b>

# 148 BB TEN X 4007

Calved 2-9-2014 Bull 17822276 Tattoo 4007

MYTTY IN FOCUS SAF FOCUS OF ER  
 AAR TEN X 7008 SA MYTTY COUNTESS 906  
 15719841 AAR LADY KELTON 5551 SAV ADAPTOR 2213  
 HSAF LADY KELTON504B  
 BR MIDLAND TWIN VLYPRECISIONE161  
 PL ROSETTA T936 BR ROYAL LASS 7036-19  
 16063929 HF ROSETTA EASY 315E G A R SLEEP EASY 1009  
 ROSETTA 131CM CUMBER

Act BW	CED	BW	WW	YW	M	CEM	
<b>82</b>	<b>8</b>	<b>1.4</b>	<b>47</b>	<b>91</b>	<b>13</b>	<b>9</b>	
\$EN	% IMF	RE	FAT	\$W	\$F	\$G	\$B
<b>4.27</b>	<b>I+1.05</b>	<b>I+.43</b>	<b>I+.013</b>	<b>24.46</b>	<b>44.12</b>	<b>44.02</b>	<b>120.4</b>

Lot 149-151 these 9938 winter bull calves are a great set of calves that are big and growthy for their age. They have a very good EPD profiles across the board. I think you will really like these uniform Missing Link 9938 calves.

# 149 BB MISSING LINK 3047

Calved 11-15-2013 Bull 17953557 Tattoo 3047

OCC MISSING LINK 830M OCC HEADLINER 661H  
 JACS MISSING LINK 9938 OCC DIXIE ERICA 946K  
 16818737 JACS PEG 4308 PINE CRK TRVR124-1107  
 L H R PEG 1051  
 TWIN EAGLES M980 GA R PRECISION 1680  
 B B PRIDE 6302 ACF BURGESS 9523  
 15731283 BB PRIDE 9287 JAYNBEE TRVR 217-872G  
 BB R15 PRIDE 7101

Act BW	CED	BW	WW	YW	M	CEM	
<b>72</b>	<b>4</b>	<b>1.6</b>	<b>45</b>	<b>72</b>	<b>21</b>	<b>6</b>	
\$EN	% IMF	RE	FAT	\$W	\$F	\$G	\$B
<b>2.10</b>	<b>.40</b>	<b>.54</b>	<b>.028</b>	<b>37.14</b>	<b>16.08</b>	<b>28.19</b>	<b>81.08</b>

# 150 BB MISSING LINK 3049

Calved 12-3-2013 Bull 17953558 Tattoo 3049

OCC MISSING LINK 830M OCC HEADLINER 661H  
 JACS MISSING LINK 9938 OCC DIXIE ERICA 946K  
 16818737 JACS PEG 4308 PINE CRK TRVR124-1107  
 L H R PEG 1051  
 ANKN WERNER WILDFIRE96 SAV 8180 TRAVELER 004  
 B B BETTY 8090 FSR ELBA SPL DSGN S406  
 16357440 B BETTY 4046 EXGLIMESTONE UNO 1111  
 B B BETTY 9091

Act BW	CED	BW	WW	YW	M	CEM	
<b>75</b>	<b>4</b>	<b>2.2</b>	<b>46</b>	<b>78</b>	<b>22</b>	<b>6</b>	
\$EN	% IMF	RE	FAT	\$W	\$F	\$G	\$B
<b>-2.70</b>	<b>.32</b>	<b>.48</b>	<b>.020</b>	<b>34.11</b>	<b>2.51</b>	<b>24.50</b>	<b>82.46</b>

# 151 BB MISSING LINK 3048

Calved 11-21-2013 Bull 17955744 Tattoo 3048

OCC MISSING LINK 830M OCC HEADLINER 661H  
 JACS MISSING LINK 9938 OCC DIXIE ERICA 946K  
 16818737 JACS PEG 4308 PINE CRK TRVR 124-1107  
 L H R PEG 1051  
 SITZ TRAVELER 8180 GDAR TRAVELER 71  
 BB BLACKCAP 1010 SITZ EVLDA ENTEN1137  
 16953449 PL BLACKCAP T944 SUMMITCREST HI PRIME  
 NERICBLACKCAPSF0192

Act BW	CED	BW	WW	YW	M	CEM	
<b>70</b>	<b>3</b>	<b>1.7</b>	<b>44</b>	<b>75</b>	<b>23</b>	<b>8</b>	
\$EN	% IMF	RE	FAT	\$W	\$F	\$G	\$B
<b>-2.71</b>	<b>.34</b>	<b>.31</b>	<b>.013</b>	<b>35.04</b>	<b>21.14</b>	<b>25.71</b>	<b>69.40</b>



**152 BB MISSING LINK 3008**  
 Calved 2-21-2013 Bull 17510765 Tattoo 3008

OCC MISSING LINK 830M  
 JACS MISSING LINK 9938  
 16818737 JACS PEG 4308

BK EQUINOX 507  
 B B LADY 0002  
 16807674 BB LADY 5157

OCC HEADLINER 661H  
 OCC DIXIE ERICA 946K  
 PINE CRKTRVR124-1107  
 L H R PEG 1051  
 ANKONIAN EQUINOX  
 B&K LASSIE 330  
 BB 4008 KRUGER 7158  
 B B LADY 1319

Act BW	CED	BW	WW	YW	M	CEM	
<b>78</b>	<b>1</b>	<b>2.0</b>	<b>50</b>	<b>78</b>	<b>22</b>	<b>5</b>	
\$EN	% IMF	RE	FAT	\$W	\$F	\$G	\$B
<b>-2.70</b>	<b>.43</b>	<b>.44</b>	<b>.037</b>	<b>40.50</b>	<b>22.16</b>	<b>28.09</b>	<b>73.33</b>

We are leading off the coming two year olds with a really nice set of 4 9938's. They are thick with lots of shape to them they are set of bulls you could turn out with a group of yearling heifers in a big pasture and they will get them bred and stay in good shape. These are the kind of bulls that will sire cows that will stay in good shape. These bulls have super EPD's low BW.

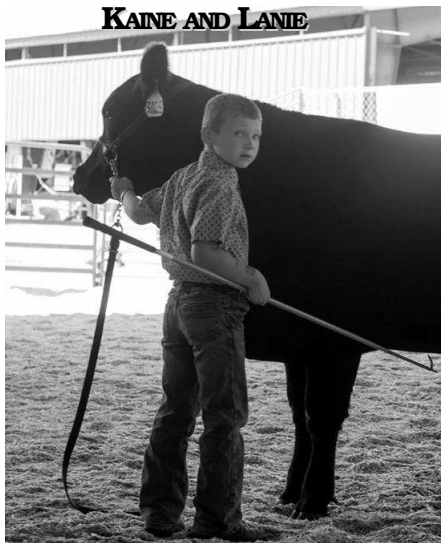
**153 BB MISSING LINK 3027**  
 Calved 3-21-2013 Bull 17554519 Tattoo 3027

OCC MISSING LINK 830M  
 JACS MISSING LINK 9938  
 16818737 JACS PEG 4308

EXAR MARACA 2414  
 BB MS PRIDE 5058  
 15099584 BB PRIDE 2359

OCC HEADLINER 661H  
 OCC DIXIE ERICA 946K  
 PINE CRK TRVR124-1107  
 L H R PEG 1051  
 B/R NEW DESIGN 323  
 DIXIE ERICA OF RR 7530  
 ANKONIAN EXT 224  
 BB PRIDE 4114

Act BW	CED	BW	WW	YW	M	CEM	
<b>70</b>	<b>7</b>	<b>.2</b>	<b>40</b>	<b>66</b>	<b>25</b>	<b>7</b>	
\$EN	% IMF	RE	FAT	\$W	\$F	\$G	\$B
<b>-1.24</b>	<b>.27</b>	<b>.41</b>	<b>.018</b>	<b>37.85</b>	<b>10.09</b>	<b>23.66</b>	<b>63.47</b>



**154 BB MISSING LINK 3023**  
 Calved 3-14-2013 Bull 17744435 Tattoo 3023

OCC MISSING LINK 830M  
 JACS MISSING LINK 9938  
 16818737 JACS PEG 4308

RITO PLUS  
 PL BLACKBIRD U262  
 16064010 LD BLACKBIRD 5304

OCC HEADLINER 661H  
 OCC DIXIE ERICA 946K  
 PINE CRK TRVR124-1107  
 L H R PEG 1051  
 ROCKN D AMBUSH 1531  
 GAR PRECISION 2536  
 WCC SPECALDSDNL609  
 LD BLACKBIRD 3104

Act BW	CED	BW	WW	YW	M	CEM	
<b>75</b>	<b>4</b>	<b>1.3</b>	<b>49</b>	<b>83</b>	<b>20</b>	<b>7</b>	
\$EN	% IMF	RE	FAT	\$W	\$F	\$G	\$B
<b>-2.18</b>	<b>.29</b>	<b>.46</b>	<b>.006</b>	<b>37.05</b>	<b>30.38</b>	<b>24.12</b>	<b>85.13</b>



**155 BB MISSING LINK 3006**  
 Calved 2-17-2013 Bull 17512589 Tattoo 3006

OCC MISSING LINK 830M  
 JACS MISSING LINK 9938  
 16818737 JACS PEG 4308

BC 7022 RAVEN 7965  
 BB MS FIREFLY 1005  
 16952440 BB MS FIREFLY 8063

OCC HEADLINER 661H  
 OCC DIXIE ERICA 946K  
 PINE CRK TRVR124-1108  
 L H R PEG 1052  
 BC MARATHON 7022  
 OCC BLACKBIRD 796F  
 B B SCOTCH LASS 4078  
 BB SCOTCH LASS 4078

Act BW	CED	BW	WW	YW	M	CEM	
<b>62</b>	<b>7</b>	<b>.8</b>	<b>45</b>	<b>76</b>	<b>18</b>	<b>8</b>	
\$EN	% IMF	RE	FAT	\$W	\$F	\$G	\$B
<b>4.72</b>	<b>.44</b>	<b>.50</b>	<b>.013</b>	<b>34.45</b>	<b>22.07</b>	<b>32.15</b>	<b>74.07</b>

**BILL AND DICK MOORE WATCHING THE GRANDKIDS**



**NORMA AND PAM WATCHING THE SHOW**

KIDS HEADED TO THE SHOWRING



We have 4 big stout bulls from our satellite herd of Eric Thorns. These are stout coming two year old bulls by our great 9001 bull that came from Mike Paul. 9001, sired by 036, and clean for DD was one of the best Angus bulls we ever had, unfortunately he got stifled last spring and we had to sell him. We got the kind out of him.

The last pen of coming 2 year old Angus bulls are all 9938's and they are thick and square, they are the Missing Link kind low birth weight and lots of growth. These bulls can all be used on heifers. They all have low \$EN numbers, their daughters will be the easy keeping kind.

**156 BB DHK 9001 DESIGN T93**  
Calved 2-21-2013 Bull 17723691 Tattoo T93

B/R NEW DESIGN 9001  
PL NEW DESIGN 9001  
16981744 THREETREEBLACKCAP3671

TWIN EAGLES M980  
DAVIS HOLLOW QUEEN T296  
15596402 DAVIS HOLLOW QUEEN T67

VDAR NEW TRAND 315  
B/R BLACKCAP EMP 76  
GAR GRID MAKER  
GAR LUCYS BOY 2118  
GAR PRECISION 1680  
ACF BUGRESS 9523  
ANKONIAN EXT 224  
BB DHQ T245

**160 BB MISSING LINK 3036**  
Calved 4-21-2013 Bull 17554543 Tattoo 3036

OCC MISSING LINK 830M  
JACS MISSING LINK 9938  
16818737 JACS PEG 4308

BB 004 TRAVELER 7049  
BB MS KRUGERRAND 9098  
16651406 C BAR U DESIGNS 4563

OCC HEADLINER 661H  
OCC DIXIE ERICA 946K  
PINE CK TRVR124-1107  
L H R PEG 1051  
SAVE 8180 TRAVEL 004  
BB LASSIE 4041  
A&B 036 NEW DEG 1197  
BB MS KRUG 3069

Act BW	CED	BW	WW	YW	M	CEM	
75	8	.5	40	70	20	11	
\$EN	% IMF	RE	FAT	\$W	\$F	\$G	\$B
4.75	.56	.27	.001	32.23	15.99	35.96	67.26

Act BW	CED	BW	WW	YW	M	CEM	
76	5	1.2	51	82	19	7	
\$EN	% IMF	RE	FAT	\$W	\$F	\$G	\$B
-0.07				39.93	27.65		

**157 BB DHK 9001 DESIGN T23**  
Calved 2-8-2013 Bull 17723662 Tattoo T23

B/R NEW DESIGN 9001  
PL NEW DESIGN 9001  
16981744 THREETREEBLACKCAP3671

BB 4008 KRUGERRAND 7158  
DHQ T431  
14095785 DAVIS HOLLOW QUEEN T107

VDAR NEW TRAND 315  
B/R BLACKCAP EMP 76  
GAR GRID MAKER  
GAR LUCYS BOY 2118  
BB KRUGERRAND 4008  
BB MS PRIDE 3047  
ANKONIAN EXT 224  
DAVISHOLLOWQUENT201

**161 BB MISSING LINK 3028**  
Calved 3-24-2013 Bull 17744436 Tattoo 3028

OCC MISSING LINK 830M  
JACS MISSING LINK 9938  
16818737 JACS PEG 4308

PL EXT T873  
BB MS BEYONCE 0016  
16651409 BB MS KRUGERRAND 6116

OCC HEADLINER 661H  
OCC DIXIE ERICA 946K  
PINECK TRVR124-1107  
L H R PEG 1051  
NBAREMULATION EXT  
GAR AMBUSH 915  
RITZVILLES BVD 409  
C BARU DSGN 4563

Act BW	CED	BW	WW	YW	M	CEM	
74	7	.4	44	74	19	10	
\$EN	% IMF	RE	FAT	\$W	\$F	\$G	\$B
4.21	.36	.08	.008	35.37	19.64	25.96	51.96

Act BW	CED	BW	WW	YW	M	CEM	
72	6	.8	49	78	20	9	
\$EN	% IMF	RE	FAT	\$W	\$F	\$G	\$B
.50				40.5	22.75		

**158 BB DHK 9001 DESIGN T63**  
Calved 2-8-2013 Bull 17723684 Tattoo T63

B/R NEW DESIGN 9001  
PL NEW DESIGN 9001  
16981744 THREETREEBLACKCAP3671

BB 4008 KRUGERRAND 7158  
DHQ T391  
14095797 BB DHQ T245

VDAR NEW TRAND 315  
B/R BLACKCAP EMP 76  
GAR GRID MAKER  
GAR LUCYS BOY 2118  
BB KRUGERRAND 4008  
BB MS PRIDE 3047  
SCHILTZ SKY DAL  
DAVIS HLW QUEEN T29

**162 BB MISSING LINK 3035**  
Calved 4-20-2013 Bull 17554526 Tattoo 3035

OCC MISSING LINK 830M  
JACS MISSING LINK 9938  
16818737 JACS PEG 4308

BB 4008 KRUGERRAND 7158  
B B LADY 5157  
15145490 B B LADY 1319

OCC HEADLINER 661H  
OCC DIXIE ERICA 946K  
PINE CK TRVR124-1107  
L H R PEG 1051  
BB KRUGERRAND 4008  
B B MS PRIDE 3047  
ANKONIAN EXT 224  
COX HI LADY 6110

Act BW	CED	BW	WW	YW	M	CEM	
77	5	.9	34	59	19	7	
\$EN	% IMF	RE	FAT	\$W	\$F	\$G	\$B
13.07	.31	.16	.013	27.96	3.32	24.84	44.58

Act BW	CED	BW	WW	YW	M	CEM	
79	1	2.1	42	68	19	5	
\$EN	% IMF	RE	FAT	\$W	\$F	\$G	\$B
7.38	1.26	1+.22	1+0.34	31.99	11.89	19.36	55.81

**159 BB DHK 9001 DESIGN T73**  
Calved 3-20-2013 Bull 17742898 Tattoo T73

B/R NEW DESIGN 036  
PL NEW DESIGN 9001  
16981744 THREETREE BLACKCAP3671

PL NAPOLEON R503  
DAVIS HOLLOW QUEEN T310  
17153322 DHQ T230

VDAR NEW TRAND 315  
B/R BLACKCAP EMPRESS  
GAR GRID MARKER  
GAR LUCYS BOY 2118  
BALDRIDGE NAPOLEON  
LLF 583 GRIDMAKER 1119  
BB 4008 KRUG 7158  
BB DHQ T245

**163 BB MISSING LINK 3033**  
Calved 4-15-2013 Bull 17554525 Tattoo 3033

OCC MISSING LINK 830M  
JACS MISSING LINK 9938  
16818737 JACS PEG 4308

NEW DESIGN OF PA R 3  
B B PRIDE 5192  
15223793 B&K PRIDE 314

OCC HEADLINER 661H  
OCC DIXIE ERICA 946K  
PINE CRK TRVR124-1107  
L H R PEG 1051  
B/R NEW DESIGN 323  
COX ERICA 126-606  
BB DESIGNS PLUS 1225  
B B PRIDE 9381

Act BW	CED	BW	WW	YW	M	CEM	
84	4	2.9	37	64	20	8	
\$EN	% IMF	RE	FAT	\$W	\$F	\$G	\$B
7.90				24.89	8.87		

Act BW	CED	BW	WW	YW	M	CEM	
82	4	1.1	48	73	22	5	
\$EN	% IMF	RE	FAT	\$W	\$F	\$G	\$B
-0.03				42.57	15.48		



HEREFORD

# REFERENCE SIRES

## BB EXCLUSIVE 1026 43216267

	CED	BW	WW	YW	M	M&G	CEM
	6.3	2.1	57	93	28	57	4.8
SC	FAT	RI	IMF	BMI	CEZ	BII	CHB
1.1	0.028	0.57	0.51	\$27	\$22	\$21	\$38

## BB 4411 MARK CLASS 1003 ET 43218057

	CED	BW	WW	YW	M	M&G	CEM
	-0.7	3.6	30	45	19	34	-1.4
SC	FAT	RI	IMF	BMI	CEZ	BII	CHB
0.6	-0.041	-0.05	-0.02	\$14	\$14	\$16	\$13

## CL 1 DOMINO 994W 1ET 42982456

	CED	BW	WW	YW	M	M&G	CEM
	0.2	4.3	50	92	28	53	-4.0
SC	FAT	RI	IMF	BMI	CEZ	BII	CHB
1.2	0.011	0.4	0.13	\$18	\$13	\$17	\$26

## CL 1 DOMINO 159Y 1ET 43216160

	CED	BW	WW	YW	M	M&G	CEM
	2.1	3.0	51	79	39	64	1.1
SC	FAT	RI	IMF	BMI	CEZ	BII	CHB
0.9	0.021	0.31	-0.08	\$13	\$15	\$9	\$20

## CL 1 DOMINO 1108Y 1ET 43189548

	CED	BW	WW	YW	M	M&G	CEM
	1.6	2.7	55	78	41	68	2.4
SC	FAT	RI	IMF	BMI	CEZ	BII	CHB
0.7	0.060	0.49	-0.12	\$10	\$14	\$6	\$19

## BB HARLAND 1015 43189197

	CED	BW	WW	YW	M	M&G	CEM
	4.2	1.9	64	112	29	62	4.2
SC	FAT	RI	IMF	BMI	CEZ	BII	CHB
1.3	-0.005	0.71	0.25	\$25	\$19	\$18	\$38

## CX 3027 ADVANCE 1050 43242410

	CED	BW	WW	YW	M	M&G	CEM
	7.5	1.7	53	82	32	58	5.1
SC	FAT	RI	IMF	BMI	CEZ	BII	CHB
1.2	0.013	0.40	0.19	\$24	\$23	\$19	\$29

## CL 1 DOMINO 0130X 1ET 43082390

	CED	BW	WW	YW	M	M&G	CEM
	3.3	1.1	60	101	34	64	0.1
SC	FAT	RI	IMF	BMI	CEZ	BII	CHB
1.1	0.024	0.46	0.06	\$17	\$16	\$12	\$29

## BB 626 ADVANTAGE 1059 43198754

	CED	BW	WW	YW	M	M&G	CEM
	-0.4	4.4	61	109	23	54	3.2
SC	FAT	RI	IMF	BMI	CEZ	BII	CHB
0.5	-0.037	0.8	-0.02	\$14	\$13	\$9	\$32

## BB MARK DONALD 3007 42364214

	CED	BW	WW	YW	M	M&G	CEM
	1.0	2.8	43	63	34	55	-1.2
SC	FAT	RI	IMF	BMI	CEZ	BII	CHB
0.7	-0.031	0.41	-0.07	\$13	\$14	\$12	\$19

## BB 9131 DOMINO 1065 42173637

	CED	BW	WW	YW	M	M&G	CEM
	1.0	4.4	61	94	24	54	2.0
SC	FAT	RI	IMF	BMI	CEZ	BII	CHB
0.2	0.027	0.38	0.08	\$11	\$13	\$6	\$27

## CHURCHILL NEON 626S 42696418

	CED	BW	WW	YW	M	M&G	CEM
	-0.6	3.7	64	131	29	61	3.2
SC	FAT	RI	IMF	BMI	CEZ	BII	CHB
0.4	-0.049	1.05	0.15	\$13	\$12	\$6	\$40

## BB SUPREMACY 1001 ET 43187073

	CED	BW	WW	YW	M	M&G	CEM
	-1.2	4.4	28	39	13	27	-1.4
SC	FAT	RI	IMF	BMI	CEZ	BII	CHB
0.4	0.022	0.02	-0.13	\$11	\$13	\$13	\$5

## SR SAGA 239W 43017219

	CED	BW	WW	YW	M	M&G	CEM
	3.1	3.1	54	93	25	52	2.9
SC	FAT	RI	IMF	BMI	CEZ	BII	CHB
1.2	-0.002	0.45	-0.01	\$20	\$18	\$17	\$26

## BB DOMINO 1087 18133299

	CED	BW	WW	YW	M	M&G	CEM
	-4.1	6.0	44	84	-1	21	-4.0
SC	FAT	RI	IMF	BMI	CEZ	BII	CHB
1.3	-0.022	0.21	-0.03	\$22	\$11	\$24	\$19

## CL 1 DOMINO 7134T 42788279

	CED	BW	WW	YW	M	M&G	CEM
	4.4	2.9	53	75	29	56	2.6
SC	FAT	RI	IMF	BMI	CEZ	BII	CHB
0.9	-0.01	0.30	0.19	\$21	\$19	\$17	\$28

## BB 3B08 LAD 1010 43179567

	CED	BW	WW	YW	M	M&G	CEM
	0.1	4.4	41	76	24	45	-0.4
SC	FAT	RI	IMF	BMI	CEZ	BII	CHB
0.5	-0.004	0.1	0.1	\$12	\$13	\$11	\$20

## UPS DOMINO 3027 42426386

	CED	BW	WW	YW	M	M&G	CEM
	11.3	-1.3	47	77	37	60	7
SC	FAT	RI	IMF	BMI	CEZ	BII	CHB
1.1	0.007	0.4	0.35	\$26	\$27	\$19	\$32

## BB 3027 DOMINO 1018 43193486

	CED	BW	WW	YW	M	M&G	CEM
	4.9	3.4	54	104	29	56	1.7
SC	FAT	RI	IMF	BMI	CEZ	BII	CHB
0.8	-0.002	0.45	0.15	\$17	\$17	\$11	\$31

## CHURCHILL PINSTRIPE 9124W ET 42992946

	CED	BW	WW	YW	M	M&G	CEM
	2.4	2.8	57	100	24	53	2.9
SC	FAT	RI	IMF	BMI	CEZ	BII	CHB
0.5	-0.003	0.44	0.39	\$18	\$16	\$13	\$36

## BB 2637 L1 DOMINO 1141 431218886

	CED	BW	WW	YW	M	M&G	CEM
	-0.2	2.3	42	56	20	41	-0.1
SC	FAT	RI	IMF	BMI	CEZ	BII	CHB
0.8	0.009	0.14	0.02	\$16	\$14	\$17	\$16

## BJ L1 DOMINO 2637 42278558

	CED	BW	WW	YW	M	M&G	CEM
	-2.1	2.7	42	62	19	40	-2.1
SC	FAT	RI	IMF	BMI	CEZ	BII	CHB
1.2	0.019	0.23	0.13	\$20	\$13	\$22	\$18

## BB 4411 MARK CLASS 1006 ET 43218060

	CED	BW	WW	YW	M	M&G	CEM
	-0.5	3.4	30	46	19	34	-1.3
SC	FAT	RI	IMF	BMI	CEZ	BII	CHB
0.6	-0.045	0.01	-0.06	\$14	\$14	\$16	\$12

## BVR RAFTSMAN 028X ET P43154805

	CED	BW	WW	YW	M	M&G	CEM
	0.5	3.6	47	73	16	40	0.3
SC	FAT	RI	IMF	BMI	CEZ	BII	CHB
0.3	-0.001	0.37	-0.04	\$12	\$13	\$10	\$20

## HARVIE TAILOR MADE ET 7W P43164954

	CED	BW	WW	YW	M	M&G	CEM
	-4.8	5.6	59	99	-1	28	2.4
SC	FAT	RI	IMF	BMI	CEZ	BII	CHB
0.6	-0.048	0.58	-0.14	\$18	\$10	\$16	\$26

## AAR TEN X 7008 SA 15719841

	CED	BW	WW	YW	M	M&G	CEM
	9	0.5	69	130	23		8
\$EN	% IMF	RE	FAT	\$W	\$F	\$G	\$B
0.24	1.4	0.87	0.004	75.81	81.00	51.32	145.4

## JACS MISSING LINK 9938 16818737

	CED	BW	WW	YW	M	M&G	CEM
	4	1.0	49	78	24		5
\$EN	% IMF	RE	FAT	\$W	\$F	\$G	\$B
-4.68	0.25	0.66	0.038	43.96	22.75	22.01	76.79

## RITO 111 OF 2536 RITO 616 13793825

	CED	BW	WW	YW	M	M&G	CEM
	-8	6.0	61	110	15		0
\$EN	% IMF	RE	FAT	\$W	\$F	\$G	\$B
-3.07	0.63	0.58	-0.078	26.03	68.55	42.27	132.7

## BB THUNDERBIRD 2020 17459693

	CED	BW	WW	YW	M	M&G	CEM
	4	1.9	56	92	16		9
\$EN	% IMF	RE	FAT	\$W	\$F	\$G	\$B
-0.83				37.66	40.17		

## PL NEW DESIGN 9001 16981744

	CED	BW	WW	YW	M	M&G	CEM
	6	2.4	39	74	22		10
\$EN	% IMF	RE	FAT	\$W	\$F	\$G	\$B
-1.62	0.65	0.45	0.000	24.42	22.56	40.75	74.27

ANGUS



# Cattle Co.

Box 36 Connell, WA 99326

Bill Bennett & Family

(509)234-4361 Cell (509)551-6102

Joe Cell (509)551-6104

Leslie Cell (509)551-6622

Jay Cell (509)551-6101

Fax (509)234-1001 [bbcattle@bossig.com](mailto:bbcattle@bossig.com)

[www.bbcattle.com](http://www.bbcattle.com)

**First Class**